



## Unsupervised host behavior classification from connection patterns

Guillaume Dewaele, Yosuke Himura, Pierre Borgnat, Kensuke Fukuda, Patrice Abry, Olivier J.J. Michel, Romain Fontugne, Kenjiro Cho, Hiroshi Esaki

### ► To cite this version:

Guillaume Dewaele, Yosuke Himura, Pierre Borgnat, Kensuke Fukuda, Patrice Abry, et al.. Unsupervised host behavior classification from connection patterns. International Journal of Network Management, 2010, 20. ensl-00488248v1

**HAL Id: ensl-00488248**

**<https://ens-lyon.hal.science/ensl-00488248v1>**

Submitted on 1 Jun 2010 (v1), last revised 9 Jun 2010 (v2)

**HAL** is a multi-disciplinary open access archive for the deposit and dissemination of scientific research documents, whether they are published or not. The documents may come from teaching and research institutions in France or abroad, or from public or private research centers.

L'archive ouverte pluridisciplinaire **HAL**, est destinée au dépôt et à la diffusion de documents scientifiques de niveau recherche, publiés ou non, émanant des établissements d'enseignement et de recherche français ou étrangers, des laboratoires publics ou privés.

## Unsupervised host behavior classification from connection patterns

Guillaume Dewaele<sup>1</sup>, Yosuke Himura<sup>2</sup>, Pierre Borgnat<sup>1\*</sup>, Kensuke Fukuda<sup>3</sup>  
Patrice Abry<sup>1</sup>, Olivier Michel<sup>4</sup>, Romain Fontugne<sup>5</sup>, Kenjiro Cho<sup>6</sup> and Hiroshi Esaki<sup>2</sup>

<sup>1</sup> Laboratoire de Physique de l'ENS de Lyon, CNRS UMR 5672, ENSL, 46 allée d'Italie F-69364 Lyon cedex 07, France

<sup>2</sup> Graduate School of Information Science and Technology, The University of Tokyo, Building 2 of Engineering Department,  
The University of Tokyo, 7-3-1 Hongo, Bunkyo-ku, Tokyo 113-8656, Japan

<sup>3</sup> National Institute of Informatics / PRESTO, JST, 2-1-2 Hitotsubashi, Chiyoda-ku, Tokyo 101-8430, Japan

<sup>4</sup> Gipsa-lab, CNRS UMR 5216, 961, rue de la Houille Blanche, BP 46, F-38402 Saint Martin d'Hères cedex, France

<sup>5</sup> Graduate University for Advanced Studies / National Institute of Informatics, Chiyoda-ku, Tokyo 101-8430, Japan

<sup>6</sup> Internet Initiative Japan, Jinbocho Mitsui Building, 1-105 Kanda Jinbocho, Chiyoda-ku, Tokyo, 101-0051, Japan

### SUMMARY

A novel host behavior classification approach is proposed as a preliminary step toward traffic classification and anomaly detection in network communication. Though many attempts described in the literature were devoted to flow or application classifications, these approaches are not always adaptable to operational constraints of traffic monitoring (expected to work even without packet payload, without bidirectionality, on highspeed networks or from flow reports only...). Instead, the classification proposed here relies on the leading idea that traffic is relevantly analyzed in terms of host typical behaviors: typical connection patterns of both legitimate applications (data sharing, downloading,...) and anomalous (eventually aggressive) behaviors are obtained by profiling traffic at the host level using unsupervised statistical classification. Classification at the host level is not reducible to flow or application classification, and neither is the contrary: they are different operations which might have complementary roles in network management. The proposed host classification is based on a nine-dimensional feature space evaluating host Internet connectivity, dispersion and exchanged traffic content. A Minimum Spanning Tree (MST) clustering technique is developed that does not require any supervised learning step to produce a set of statistically established typical host behaviors. Not relying on a priori defined classes of known behaviors enables the procedure to discover new host behaviors, that potentially were never observed before. This procedure is applied to traffic collected over the entire year 2008 on a transpacific (Japan/USA) link. A cross-validation of this unsupervised classification against a classical port-based inspection and a state-of-the-art method provides assessment of the meaningfulness and the relevance of the obtained classes for host behaviors. Copyright © 2010 John Wiley & Sons, Ltd.

KEY WORDS: Traffic Classification; Host behavior; Feature space; Minimum Spanning Tree clustering.

---

\*Correspondence to: pierre.borgnat@ens-lyon.fr, Laboratoire de Physique, ENS de Lyon, CNRS UMR 5672, 46 allée d'Italie, F-69364 Lyon cedex, France

Contract/grant sponsor: This work is supported by Strategic International Cooperative Program between CNRS (France) and JST (Japan); contract/grant number: 2006-2009

## 1. Introduction

A major issue in network traffic analysis consists in classifying and characterizing traffic. Performing an accurate classification is indeed essential in various respects, such as traffic control, application identification, defense against attacks, and anomaly detection. Common approaches are based on rules and signatures, combining port number identification with payload signature matching. However, they are often observed to fail, either because of packet encryption, arbitrary or dynamic port use, or because different protocols or utilizations employ the same single port (e.g., doing software update on port 80). The possibility of analyzing unidirectional traffic only, because of asymmetric routing, also prevents to use many such methods. Statistics-based approaches are also regularly used, amongst which supervised learning methods [1] are the most recently used, for packet or flow classification. However, their performance strongly depends on the choice of the training datasets, and hence on the availability of traces where ground-truth of some form is assumed known – a situation which is rare, if even attainable, for real Internet traffic. Another major drawback of supervised classification consists of the fact that unknown traffic types cannot be identified. Therefore, unsupervised classification should be preferred. Additionally, host-level classification, though it has greater usefulness for the global analysis of a link or a network than usual application or flow classification, has rarely been performed, mostly because of the complexity inherent to host characterization.

Therefore, the focus in this article is on characterizing host-level behaviors and classifying hosts, in an unsupervised manner. The goal consists of the identification of classes of computers (or hosts) characterized by their mixture of traffic, automatically from the statistical profile of their communication, without any prior knowledge about existing classes of hosts. The proposed work is intended as a kind of pre-filtering step of traffic analysis, preliminary to more specific operations of network management (e.g., anomaly detection, application identification,...) Our rationale is that, on backbone links, using methods for network management on every packet or flow is not easy, nor even achievable due to the high load and the computational resources that would be needed. Given this context, the objective of the current work to provide a first general view of what is transported on this link, at the level of the hosts (which are less numerous than flows, and more stable in behavior). Then this view could be used as an indication of which hosts, flows or packets should be inspected more closely for network management (using for that existing methods for flow or application classification, or for anomaly detection). In any case, host classification is not reducible to flow or application classification (and neither does the contrary hold), because today's Internet uses consist of mixtures of different services so that a host can no longer be characterized by a single service. Hence conducting a priori an enumeration of classes of behaviors becomes a hopeless task. The choice of an unsupervised approach allows to split hosts into groups with different behaviors and, most importantly, to find new and/or unknown classes of behaviors (mix of traffic, new applications, anomalies or malicious attacks, etc) besides the expected classical ones (P2P, Web, etc). Also, it avoids the conceptual and practical difficulties inherently associated to training set preparation. To that end, a classification technique is proposed that makes use of an extended characterization of the host traffic patterns. It is further required that only a small number of parameters have to be tuned, and that the technique is applicable to monitor backbone links: It should work without packet payload inspection, with unidirectional traffic data only (no bidirectionality in data due to load-balancing or other routing policies), for highspeed networks and/or from flow reports only. Even many state-of-the-art methods (e.g., [2, 3]) do not work for unidirectional traffic [1]. The constraints stemming from such requirements rule out most of the classification procedures classically involved in IDS (cf. e.g., [4, 5]).

There are two major novelties in this contribution. First, nine connection pattern based features are

involved for the characterization of host-level traffic. It will be argued how and why such nine features provide a relevant description of both the transport and connection layers of host traffic as well as their functional and social behaviors (popularity, acting as servers or not, communicating with one or many hosts,...). Second, there is no reason a priori why host clusters should have convex structures in the 9D connection feature space. Therefore, their identification from standard clustering methods [6] can turn very difficult. This hence motivates the development and use of a recent and efficient technique: Classification is performed using a Minimum Spanning Tree (MST) based clustering algorithm that can identify non-convex sets as classes in the feature space. The proposed procedure is evaluated on real traffic traces collected on a transpacific link. Data (the MAWI dataset) are publicly available, at <http://mawi.wide.ad.jp> [7]).

The remainder of the article is organized as follows: Traffic classification related works are discussed in Section 2. The rationale behind the choice of the nine features and their precise definitions and meaning are detailed in Section 3. An efficient MST based clustering method is described in Section 4. Results obtained from real traffic traces and validation, by traffic manual inspection and cross-validation against classical methods are reported in Section 5. This host classification yields fruitful insights of the real traces inspected (e.g., there are different usages of the same protocols). Conclusions are drawn in Section 6.

## 2. Related work

Traffic classification procedure can be broadly split into two categories: rule-based vs. statistics-based ones. We will not conduct a complete survey of existing methods (see, e.g., [1]), and only some elements are provided to compare and contrast the proposed method from the ones in the literature.

**Rule-based:** Snort [8] is the paradigm of rule-based intrusion detection system inspecting packet payload and comparing it with its signature database. It works for traffic classification, but fails to identify encrypted or emerging applications. Other approaches based on heuristic rules (e.g., port numbers) are deemed reliable and often used because the rules are designed based on human's intuition and give results comparable to the findings of experts (if given enough rules). In particular, BLINC "Multilevel Traffic Classification" [9] focuses on communication flow structure among hosts and recursively identifies flows per application. It is an interesting approach, but still has drawbacks that all rules and communication patterns (represented as graphlets in [9]) should be pre-defined and the order in which they are applied affects its performance. Furthermore, it aims at identifying server application flows rather than client ones. Also, as for the host-level classification, when there is a mixture of application flows, they are independently identified. Finally, some studies [1, 10, 11] show that BLINC does not work at best on backbone links. Anyway, we will compare our work to results given by BLINC which appears as one of the state-of-the-art classification methods at the host-level, and one of the few with easily available implementation. Also, the results obtained in Section 5.4 will show that BLINC provides classification results that are acceptable, even if not perfect. Recently, an original work classifies hosts by mining Google database [12]; A limitation here is that it seems to have some difficulties in identifying client hosts and P2P application users, finding only a small proportion of them in the traffic. As we know that P2P is a major part of traffic in the MAWI dataset [13], this methods does not appear to be suitable for comparison. More generally, signature and port based approaches are accurate for well-known traffic, but cannot identify unknown one (e.g., zero-day attack).

**Statistics-based:** Several supervised learning methods (e.g., neural network [14], Bayes theory [3], and Support Vector Machine [1]) have been applied to traffic classification. However, their accuracy,

depends on correctly-labeled training dataset: this is difficult to construct for real Internet traffic. Unsupervised clustering methods (e.g., K-Means [2], AutoClass, DBSCAN [6] or entropy-based profiling [15]) have also been used, grouping packets or flows with similar features (cf. e.g., [4, 5] for reviews of unsupervised classification though orientated toward anomaly detection). Note that these works often use less features for describing the traffic than what we will propose in the next Section (e.g., in [15], only source ports, destinations ports, and destination IP are used). A part of the originality of the present work is to involve metrics relevant to network traffic information both at a global level of the host, and for the packets or flows it emits (or receives), and not only features related to individual packets or flows. As a consequence, related methods can not give classification on the host-level (the objective here) which is relevant for the global monitoring of a network and its hosts.

Here, unsupervised classification is performed on network-based features so as to identify host behaviors.

### 3. Features of connection pattern

The first contribution is to analyze how a collection of features (or attributes) can be used to statistically parametrize traffic at the host level.

In [9], a graphlet description of traffic at the host-level, complemented with functional and/or social level features, is proposed, that can be read as a *connection pattern* characterizing a host. However, graphlets, essentially living in a space of potentially infinite dimension, convey far too much information for a proper use in any unsupervised statistical classification procedure. Actually, diversity in graphlets is such that the authors of [9] had to resort to the design of a set of rules, aiming at identifying, amongst a set of known application graphlets, the one that best matches that of a given host. As a consequence, only simple patterns can be identified while no new class nor any mixture of traffic can be discovered.

Instead, the goal of the present contribution is to represent host connection patterns in a space of traffic features aiming at balancing the parsimony/relevance trade-off: The space dimension must be kept as low as possible (as opposed to the approaches in [4, 5]), for processing efficiency and ease of interpretation; while carrying rich enough information to allow the discrimination of different host behaviors. To that end, nine features labelled  $F_n$ , with  $n = i, \dots, ix$ , are defined. For each host, they are computed and used as a 9D feature vector. These nine features are gathered into three groups sensing respectively the host network connectivity, dispersivity and traffic content. In the proposed approach, each host can be characterized either as a source of traffic (meaning that it emits packets having this IP source), or as a destination of traffic (packets with its IP as destination). This would end up with two classes for each given host: one pertaining to its IPsrc behavior (this one is discussed in details here), and one relevant to its behavior as IPdst. The latter one is not discussed in this article for the sake of simplicity. Mutatis mutandis, the results that would be obtained with the same methodology for hosts as destination of traffic, are similar in the sense that hosts (seen as clients, servers, doing transfers, ...) would be usually classified as having the same roles even though the traffic is seen in the reverse direction. The conciliation of both points of view, would be a major asset for traffic management. However, being a different task in itself, it will not be conducted in the present work, and will only be discussed shortly at the end.

**1. Network connectivity.** These three first features describe the way a host is connected to the Internet, consisting of:

**i) the number of peers (or destination IPs):** the peers of a given hosts are defined as being the

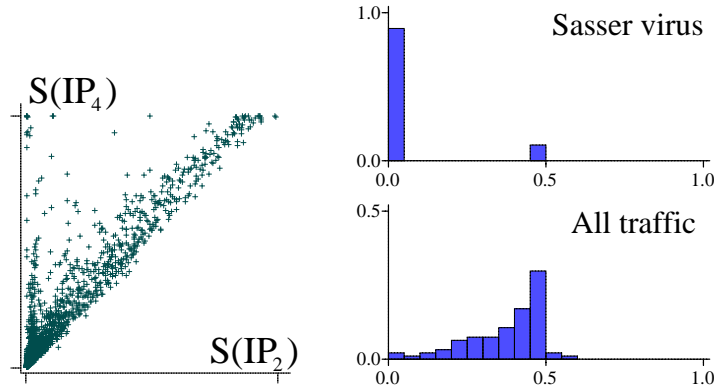


Figure 1. **Connection Dispersion.** Left: The entropies of IP for the various hosts in a traffic is represented, as scatter plot of  $S(IP_2)$  vs.  $S(IP_4)$ , each dot represents a host. Two different areas are apparent:  $S(IP_2) \ll S(IP_4)$  and  $S(IP_2) \lesssim S(IP_4)$  that can be distinguished by taking the ratio:  $F_{iv} = S(IP_2)/S(IP_4)$ . Right: distribution of this feature after normalization ( $f_{iv}$ ) for traffic associated to the Sasser virus only, and for the whole traffic.

destination IPs to which at least one packet is sent to in the trace. This feature distinguishes one-to-one communications (e.g., downloads) from one-to-several (e.g., browsing) and from one-to-many (e.g., netscans, viruses);

**ii) the number of source ports, divided by the number of peers (or destination IPs):** Servers reply usually on a single, fixed source port for classical protocols, while clients open a different (usually random) port for each connection to a server. Large values often betray attacks (many connections initiated) or portscans.

**iii) the number of destination ports, divided by the number of peers (destination IPs):** Likewise, this feature probes whether the analyzed IP peers has a server behavior or not.

These parameters, or variations of, are classical in the traffic classification literature. The number of peers describes the social behavior of the host, notably its popularity in communicating with other computers. A normalization by the number of peers is introduced for the second and third features to better quantify the functional behaviors of the host and enables to identify whether it is a client (usually one port for a given peer), a server (many ports, many peers), a piece of an overlay network (small number of ports, many peers). Note also that ICMP is handled as a different port number, as in netflow. Beyond, the mere number of ports used, these three first features convey a richer information regarding the pattern of connectivity of the host, and convert this complex network connectivity pattern into numerical indices, simpler to exploit.

**II. Connection dispersion in the network.** Because features  $F_i$  to  $F_{iii}$  are not sufficient to assess the social or functional role of a host, two features are introduced to characterize the dispersion observed on the list of peers (or IPdst) associated to a given host. To quantify the spreading in the IP space of the peers of a given host, the use of variances or kurtosis of the distribution is not suited. IPs are actually not valued and there is therefore no meaning in taking a mean over the values of the IPs, or over any power of them. Only the repartition of the probabilities is meaningful. Because the complete distribution of the peers in the IP space would be too complicated to characterize, its Shannon entropy  $S$  is classically used instead, as it is known to relevantly measure the distribution dispersion [16]. Entropy

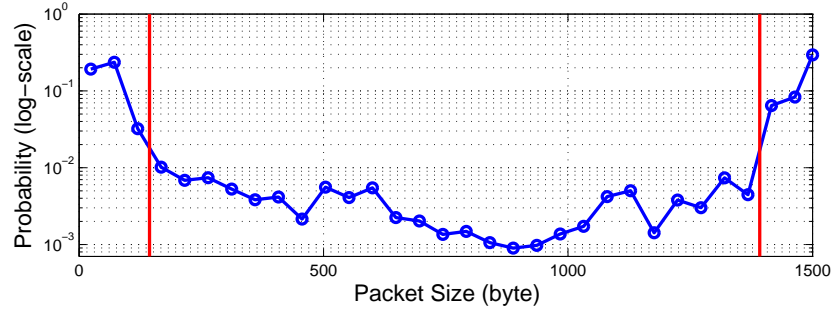


Figure 2. **Distribution of Packet Size** (for the data used in 5). Histogram in log-scale, with bins going from 0 to 1500 bytes, steps of 48 bytes. The vertical (red) lines are the limits, decided from this distribution, of the small and large packets, corresponding to its two dominant modes. They respectively account for 46% and 44% of the packets, with a large drop of probability between the chosen limit and the probability of the medium-sized packets that are defined here as packets larger than 144 bytes and smaller than 1392 bytes (in coherence with the definition of the features).

for IP distributions has been previously used in traffic analysis (e.g., [17]), to check whether peer distributions in the IP space are of spiky or flat type. This solution is consistent with the aforementioned parsimony/relevance trade-off. Still, a refinement is introduced: Entropy is not computed directly on the distribution of the entire IP addresses but instead on those of the different bytes in the IP space:

**iv) the ratio of the entropies of the second and fourth bytes of IPdst:**  $S(IP_2)/S(IP_4)$

**v) the ratio of the entropies of the third and fourth bytes:**  $S(IP_3)/S(IP_4)$ .

Let us explain the motivations beyond such refinement. Because most IP addresses are reserved, and because some subnetworks are more populated than others, distribution of peers over the IP space is not random in real cases. This is even more so for backbone link traffic, as it conveys only packets targeting a specific subpart of the Internet. In IPv4, the first and second bytes usually correspond to locations or corporations managing IPs, while the fourth one represents hosts in a same subnetwork and distributions of regular traffic inherits from this structure. Therefore, computing  $S$  directly over IP does not account for the strong structure of the IP space, while byte base entropy ratios do. Indeed, as can be seen in Fig. 1 (left), for most of regular traffic, entropy measured on  $IP_2$  tends to be just a little bit lower than that on  $IP_4$ . Conversely, a large difference in these entropies is likely to betray scanning. This motivates the computation of entropies of the IP dst second, third and fourth bytes (noted  $IP_2$  to  $IP_4$ ), and then the use entropy ratios.

Let us further detail the benefits of using byte entropies as compared to the simpler entropy on IP,  $S(IP)$ : A host sending a couple of packets to a thousand real HTTP servers in the Internet has the same  $S(IP)$  as a scanner (or virus) sending packets toward a thousand IPs over a subnetwork, in an organized manner, whereas  $S(IP_2)$  (and possibly  $S(IP_3)$ ) differ since scanner sends packets to a limited number of subnetworks. Hence, byte entropies display a higher variability in the last bytes than in the first ones. Conversely, some viruses and malwares are targeting random hosts, missing the fact that some subnetworks are more populated than others. Again, this behavior is not visible on the single  $S(IP)$  but are likely to be seen when comparing  $S(IP_{2/3})$  and  $S(IP_4)$ . For instance, the ratio  $F_{iv} = S(IP_2)/S(IP_4)$  distinguishes Sasser traffic from regular traffic (cf. Fig. 1, right).  $S(IP_1)$  is not used because traffic routing constraints the possible values taken over a link, and, for traffic on a



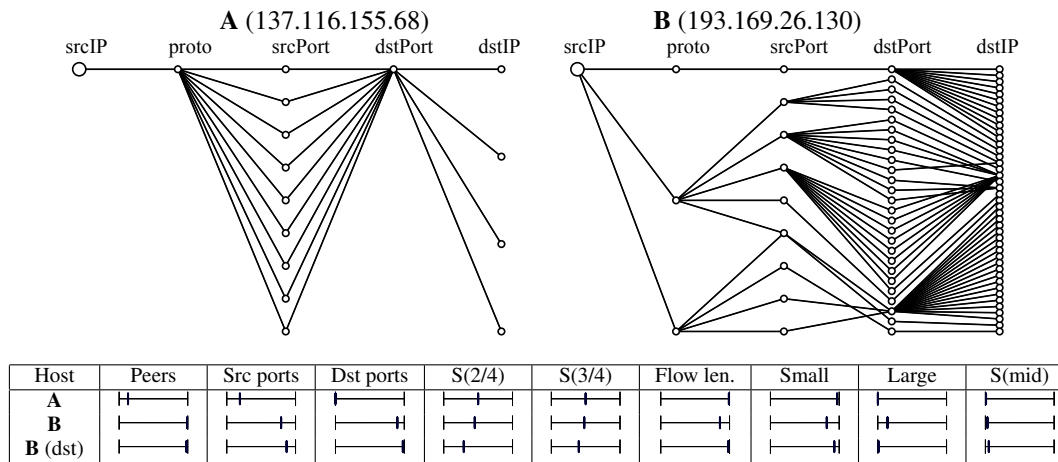


Figure 3. **Features of connection patterns and Graphlet.** Comparison for two given hosts (with the anonymized IP provided in the trace) in the trace of Feb., 1st 2008, of the computed 9D features and of the associated graphlets. The value between 0 and 1 of each feature is indicated by the thick vertical bar on the scale (0 is on the left, 1 on the right). Host **B** displays a complex behavior for its graphlet; to better understand what happens and for the sake of example, its features as IPdst (the last line **B (dst)**) are given. The complete interpretation of the traffic of these two hosts is given in the text: **A** is mostly doing HTTP request over TCP; **B** has a mixture of traffic (P2P, Ping-flood).

transit backbone link (such as the transpacific link analyzed hereafter), values for the first byte vary only weakly. Still,  $S(IP_1)$  would be useful if the interest is in network-wide classification.

**III. Host traffic content.** Finally, packet sizes and numbers are used as follows, so as to characterize the type of traffic emitted, with no recourse to payload inspection. Indeed, the distribution of packet size for the entire traffic (cf. Fig. 2 computed from the total traffic of the MAWI data [7] in 2008), two modes are clearly observed standing out at the extrema of the possible packet size: one for small packets and one for large packets. In between, the distribution shape varies, depending on the type of traffic (observed peaks are representative of various applications or protocols). Consequently, the four additional characteristic features are retained:

**vi) the mean number of packets per flow:** It roughly distinguishes elephant flows from mice flows or non-connected flows (likely attacks or scans);

**vii) the percentage of small size packets** ( $\leq 144$  bytes) in emitted traffic: Small size packets mostly consist of signaling traffic;

**viii) the percentage of large size packets** ( $\geq 1392$  bytes) in emitted traffic: Large size packets indicate data exchange traffic, such as downloads;

**ix) the entropy of the distribution of medium size packets** defined here as packets larger than 144 bytes and smaller than 1392 bytes in emitted traffic.

This last feature specifically points toward web or interactive traffic, usually displaying higher variabilities in packet sizes than other types of traffic. Also, some protocols use fixed-size packets, which can obviously be measured by the entropy of the distribution of medium size packets. Recent studies [18, 19] showed significant signatures in the packet size distribution for traffic analysis, even though numerous protocols are more and more often trying to vary packet size to avoid being easily



detectable.

**Normalization of the feature space.** Classification amounts to ordering distances in this 9D space, defined above. The chosen features naturally vary in large (number of ports, peers) or narrower (entropies) ranges. To balance their relative importance, a non linear transform is applied to each feature  $F_n$ :  $f_n = (2/\pi) \arctan(F_n/R_n)$  where  $R_n$  are reference parameters that ensure the renormalization of all features into the common range of values  $[0, 1]$ . Parameter  $R_i$  is set to 10, corresponding to average number of peers and found to relevantly separate *few* from *many* peers. Parameters  $R_{ii}$  and  $R_{iii}$  are both set to the actual number of peers  $F_i$ . For entropies, features **iv** and **v**, being ratios, are naturally normalized. Hence,  $f_{iv}$  and  $f_v$  correspond to angles in the  $S(IP_{2/3})$  and  $S(IP_4)$  spaces. The size of flows  $F_{vi}$  is scaled by  $R_{vi} = 100$ ;  $F_{vii}$  and  $F_{viii}$  are naturally normalized, as expressed in percentage. Finally, feature  $F_{ix}$ , entropy of midsize packets, is naturally scaled into  $[0, 1]$  with a division by  $\log K$  (where  $K$  is the number of bins involved in the packet size distribution). All these normalization parameters may require tuning with the nature of the studied link, yet the choices of their precise values have been checked to not critically vary the performance of the proposed classification procedure.

**Features of Connection patterns vs. Graphlets.** The selected features are claimed to be representative of the transport-level behavior of a given host. To check for that, the features and the graphlets (from [9]) of 2 specific hosts are shown in Fig. 3. The 9 features are displayed (from 0 (left) to 1 (right)) and are compared against graphlets as a convenient way to visualize the type of activities of the hosts. Features **i** to **iii** obviously reflect the number of nodes to put in the graphlets. The remaining features complement the description. For instance, host **A** is mostly doing HTTP requests over TCP: It uses a small to medium number of peers and src ports, whereas it targets a single same dst port (turning out to be port 80) and emits a dominant proportion of small packets (feature **vii** is close to 1). Clearly, the 9 features reveals satisfactorily typology of this HTTP client behavior. For host **B**, one would have a hard time to interpret the graphlet or to find a known class of traffic giving rise to such a graphlet. Instead, the quantitative features (shown here both as sender and receiver) provide information that can be dealt with in a automated manner, using a suited unsupervised clustering method. From the analysis of the feature values, it can guessed that this host displays a mixture of traffic, and, indeed, manual inspection reveals that it combines P2P traffic with many peers with the emission of a Ping-flood aiming at a large number of destination hosts. Such an host behavior is typically of the type that the unsupervised classification method described below enables to identify.

**Computation of the features.** Finally, let us note that features **i** to **vi** could be calculated from netflow reports. Note here that flows are defined classically, either by considering all packets sharing the same five-tuples during 15min to be in the same flow, or by using the same method as for netflow reports, with timeouts of a few minutes. For short traces, this was not changing the results. Due to computation and memory constraints, though, most netflow reports use sampled data when throughput is high, implying a non reversible loss of information. Because the goal here is primarily to assess the relevance of the proposed method, we do not use netflow reports and, instead, measure flow parameters (e.g.,  $F_i$  or number of ports) directly from traces. As this question has already classical answers (e.g., netflow) the procedure is not detailed here: It involves in our implementation hashing techniques, and is fast and memory efficient enough to work online on any backbone using a consumer desktop PC. Some recent works, e.g. [20, 21], share a common spirit, using sketches. Features **vii** to **ix**, not available in netflow reports, are computed directly from packet traces. However, these features are easy to compute on-line from traces. This would be a welcome addition to usual flow reports. Robustness to sampling is beyond the scope of the present contribution and left for future work.

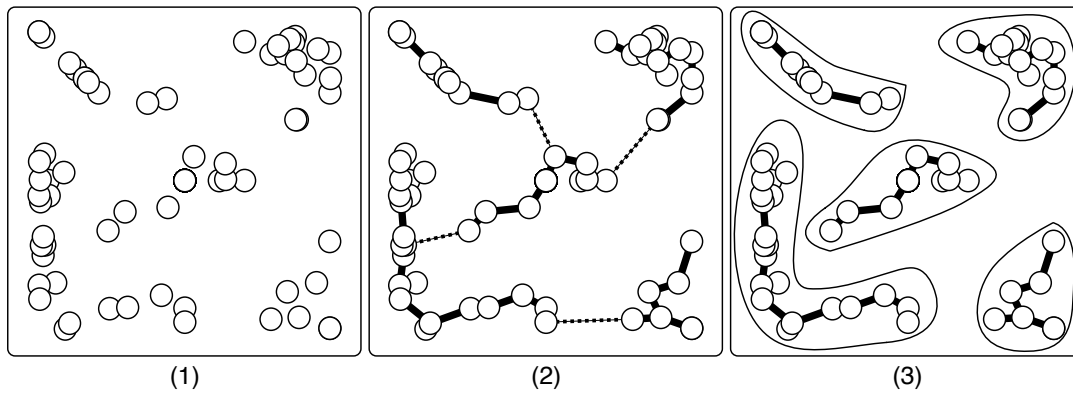


Figure 4. **MST clustering procedure.** For illustration purpose, a set of hosts is spread into a (reduced 2D) feature space (1), the corresponding MST is shown (2) with the longest edges in dashed lines, and the shorter edges in solid lines. Then, step II (edge cutting procedure) yields the clusters shown in plot (3). Step III of the procedure is not illustrated here as it makes sense mostly in a space with more dimensions and with more hosts involved.

#### 4. Unsupervised classification using Minimum Spanning Tree

The benefits of using unsupervised classification to detect new types of host (and traffic) has been discussed earlier; this rules out supervised methods such as Support Vector Machines (SVM). Because the shapes of the clusters can not be expected a priori to be convex sets, and because the classification procedure has to work in the nine-dimensional feature vector, it is chosen to rely on minimum spanning tree (MST) for the classification. From graph theory, a MST is defined, for a given set of nodes, as the fully connected acyclic graph whose edge total length is minimal, amongst all possible trees (see, e.g., [22, 23] for a tutorial introduction). The benefits for using a MST clustering procedure fulfill all requirements listed above: It is unsupervised, hence avoiding the recourse to a labeled traffic database (that is rarely available and that would anyway require regular actualization); It yields a posteriori and data-driven clusters, hence enabling to discover new classes of (not previously expected nor obtained) behaviors. Also, the motivation stems for the fact that the clusters obtained are in no manner constrained to be convex, or of a specific shape: clusters of hosts would emerge from regions of densely connected regions, be they of bent shapes, hyperplanes, hyperspheres or of any geometry. See, e.g., [24, 25] for examples of MST-based clustering methods that can uncover complex-shaped clusters in other contexts. Additional motivations for using MST based techniques relies on some more theoretic nevertheless attractive features. MST belong to the class of quasi-additive graphs and can therefore be seen as entropy estimators [26]. As a consequence, the clusters output by the proposed algorithm are actually optimal with respect to an entropy minimization criterion, as shown in [27] and rediscovered recently in [28]. Furthermore, the relationship between MST features and manifold properties has recently been highlighted: When dealing with high dimensional data that may lie on a lower dimensional manifold, this graph based approach allows to handle it in some natural way (cf. [24]). Finally, the possibility to address large data set problems should also be emphasized, as MST constructions may be quite easily implemented so that the computational burden is maintained in  $O(N \log N)$  operations.

Let us now explain how the MST clustering technique is customized and tuned for the classification

of host behaviors and detail a complete description of the procedure. It consists of three steps, as sketched in Fig. 4, on a simplified (for sake of clarity) yet real example in a reduced 2D feature space.

**I) Compute MST:** From the selected traffic data, the 9D features  $f_n$  are computed for each host and the corresponding MST is computed in this 9D space. For efficiency, we use a classical greedy algorithm to build the MST, starting from a random host (as it is known that the MST is unique and will not depend on this choice). Because some features take only integer values, the feature space is made continuous by adding random values uniformly spread in  $[0, 1]$  to  $F_n$ , hence prior to the normalization transformation. This transforms area where a large number of hosts take the same integer value into dense regions. This can be read as an alternative solution to the introduction of weights at nodes where hosts are collocated.

**II) First Clustering:** Edges of the tree are sorted by decreasing lengths, and the longest ones are removed to get independent components. The edge length threshold depends on the desired number of clusters, and is in relation with the number of hosts in the data (and hence the mean distance between hosts). It is currently set to  $T = 0.25$ , as a result of a trial-and-error approach. The precise value of this threshold is found to be not overly sensitive. For instance, it remains valid when used to analyze traffic recorded on the same MAWI dataset, for other years.

Clustering by cutting edges in MST is known to be unstable in the presence of outliers (e.g., rare anomalies), or when there is some “jitter” of the vertices (which is possible for Internet traffic because of mixed host behaviors), hence requiring refinements to identify relevant classes, leading to a third step.

**III) Identify dense clusters:** The most dense subpart (cores) of the clusters of identified at step II are detected. They are defined as being subtrees of cardinality larger than 10, whose nodes are connected by edges of length smaller than  $T' = 0.05$ . This threshold is currently selected by trials and its automatic determination will be studied thoroughly in future contributions. When two cores are found within the same cluster of step II, they are split into separate ones by removing the longest edges along the path between cores, on condition that the distance that separates them is large enough: the number of pairs of points, belonging to the two different sub-clusters, whose distance is below  $T$  is calculated; if this number is a low percentage (less than 10%) of all possible inter sub-cluster pairings, sub-clusters are split into independent classes. Finally, only significant clusters, consisting of at least 25 hosts, are kept.

The proposed operational approach for cluster identification deserves a brief discussion. Steps II and III in the procedure requires ‘hand-tuned’ parameters based on some priors or expertise. As already outlined, the results that are presented in the papers show a good robustness with respect to variation in the threshold value. However, a fully unsupervised data driven algorithm should include automatic estimation of these later parameters. Estimating the right number of clusters and their centroids is a difficult problem, for which no universally adopted strategy exists. Among the recent approaches are Prim curves thresholding [29], spectral clustering methods [30] and diffusion maps [31] to cite but a few. Prim curves allow to unfold the high dimensional distribution into a one dimensional curve that highlights the presence of high density (reps. low density) areas in the data set. Setting the threshold may rely upon a Neyman Pearson strategy to maximize the false cluster detection probability [32]. Spectral clustering exploits the structure of the eigen-decomposition of the graph Laplacian. The number of significant eigenvalues allows to estimate the number of clusters. However, this approach requires a parameter that may be difficult to tune if the clusters have very different characteristic sizes. A characteristic length is also required for defining the diffusion kernel in [31]. Although a thorough discussion of unsupervised clustering methods is beyond the scope of the paper, it is worth mentioning that these latter methods are very promising and must be investigated in future work, to provide a fully

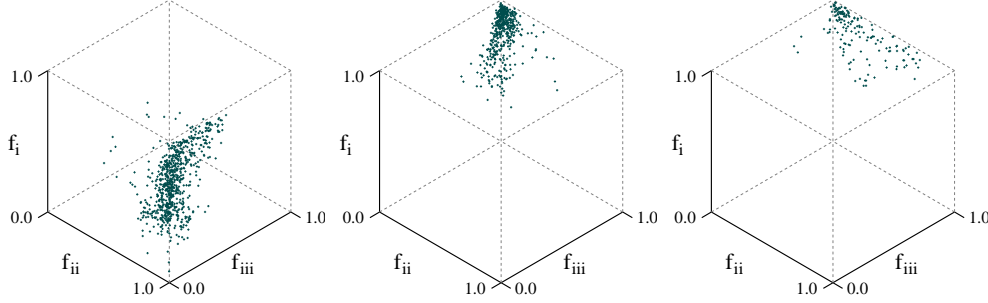


Figure 5. **Clusters C1, S1 and S3 displayed in projected space on features i, ii and iii (only).** Each dot is one host of the given cluster. The non-convex and intricate shapes of the clusters found justify the use of the MST-based clustering method. A first point is that each cluster is spread over a large part of the space, with some overlapping between them: a simple segmentation in this space would not separate them. Also, in this projected 3D space, clusters S1 and S3 (both associated to servers, as discussed in text, Section 5.3) are different in that hosts in S1 have often a high  $f_{iii}$  with a low  $f_{ii}$ : this indicates that hosts in S1 are communicating with many peers using a single type of service (just a few src ports) but aim at many different dst ports. For host of S3, which behave also as servers, the number of src ports  $f_{ii}$  is a little bit higher, showing a larger variety of services. The difference between clients C1 and servers is mostly in the number of src ports  $f_{ii}$  used: this feature is closed to 1, telling that there is roughly one flow for each peer.

automated procedure.

The proposed 3-step procedure yields an adaptive (or data-driven) number of dense and significant clusters of hosts, whose shapes and numbers of hosts per cluster are neither identical nor a priori defined (cf. Fig. 4). Notably, the clusters do not need to be hyperspheres, and can be non convex. Hence, they can consist of any complex manifolds of any dimensionality. The method described here has not been designed nor finely tuned for the specific dataset that is used in the next Section, and it was based on generic principles. As a consequence, the performance of the methodology would not change dramatically on other data.

## 5. Results and Cross-Validation

### 5.1. Dataset: description and clustering

The traffic analyzed here, taken from the MAWI traffic repository [7], consists of publicly available 15-min pcap traces with anonymized addresses and no payload. Traffic is collected on a 1 Gbps transpacific link between Japan and the US (Samplepoint-F). Note that even if traffic is recorded in both directions, and because of the asymmetric nature of WAN routing, traffic of a given host is not necessarily collected in both directions. Specifically, traces do not usually contain both request and answer direction of a given flow. This feature was already mentioned in [13] and is consistent with the findings reported in [33]. This forbid the use of a number of classification methods (e.g., [2, 3]) specifically requesting bidirectionality. The link mostly carries commodity traffic so that the main traffic is web, followed by P2P (yet transcontinental P2P traffic displays unusual features, as discussed below). More detailed descriptions of its content can be found in [7, 13, 34].

First, the host MST-based clustering algorithm is applied to 7 days in Jan. 2008, hence yielding a set of unsupervised clusters. Chosen days are Jan. 2008, 8, 9, 10, 15, 16, 17, 22, so as to have a mix of both week-days and week-ends. Second, 50 other traffic traces, also recorded in 2008 (5 days each months)<sup>†</sup> are analyzed: A host is associated to the cluster to which it has minimum distance, where distance to a cluster is defined here as the minimum distance to any point belonging to the cluster. Should this distance be larger than  $T$ , it remains unclassified. Days are picked without prior knowledge to preclude subjectivity. Each trace is processed independently, hence whenever a host is present in severals, it is regarded as new (which is consistent with its traffic being likely to vary from one day to another). Only results for hosts that send at least 1500 packets during a 15min trace are reported, so as to keep a number tractable for manual inspection of their traffic (to check for the relevancy of the results with an network expert). Both direction, Japan to the US and back, are analyzed at the same time.

This methodology for data analysis lead us to the clustering of host behaviors. The largest clusters are further reported on in Fig. 6. Before analyzing them, let us first turn to the labeling of the trace.

### 5.2. Trace labeling for validation

Because the goal of the present work consist of assessing the relevance of clusters (and hence to explain the chosen labels), comparisons against some form of data *ground truth* are needed. However, for real traffic (as the MAWI traces), ground truth is not available *per se*. Many algorithms can help to classify packets and hosts to obtain a basic labeling, hence to ease the assessment of automatic classification procedures. As payload is not available here, methods that rely on Deep Packet Inspection cannot be used. This is a limitation of the methodology adopted for validation; however, absence of payload is a very frequent situation of analysis of network traffic, especially for a posteriori analyses and research studies (due to privacy issues and to the size of datasets with payloads). Also, using payload, known applications can be recognized but it does not help to identify unknown applications, nor is it useful directly for host classification that is the objective here.

For validation and interpretation of the clusters that are identified by the MST-based clustering, we first rely on our expertise of Internet traffic, and, more particularly of the MAWI dataset gained from the previous analyses conducted over it (cf. [7, 13, 34]). To guide the labeling work of network practitioners, and as shown in [1], a first step of port-based analysis is sufficient to identify most legacy applications such as web, mail, DNS,... Then, the anomaly detection method, introduced in [34] allows to tag as such most of the anomalies occurring in the analyzed traffic. Finally, a set of heuristic rules (some being inspired by those given in works such as [9]) complete the tools used to label manually the traces and the behavior of the hosts. As a side note, let us remark that in the analysis of the content of the traffic, hosts are defined as being a specific IP. In many networks, NAT process is used that blurs the strict correspondence between an IP and a host: a given IP can be used by different computers. When the host associated to the IP changes (e.g., because DHCP is used), it does not matter much as we are using short duration traces (15 min) that are processed independently: the risk is reduced of having a given IP used by another host during this period. For NAT using port translation, several computers can be under one unique IP at the same time. Ignoring this is currently a limitation of the reported analyses, both with the proposed MST-based clustering and with classical Port-based or BLINC classifications that are used for comparison (none of these methods distinguish between hosts having the same IP). The methodology and the discussion about cross-validation would have to be improved in future works,

<sup>†</sup>More precisely, the days were the 1st, 8th, 15th, 21st and 29th of each month.

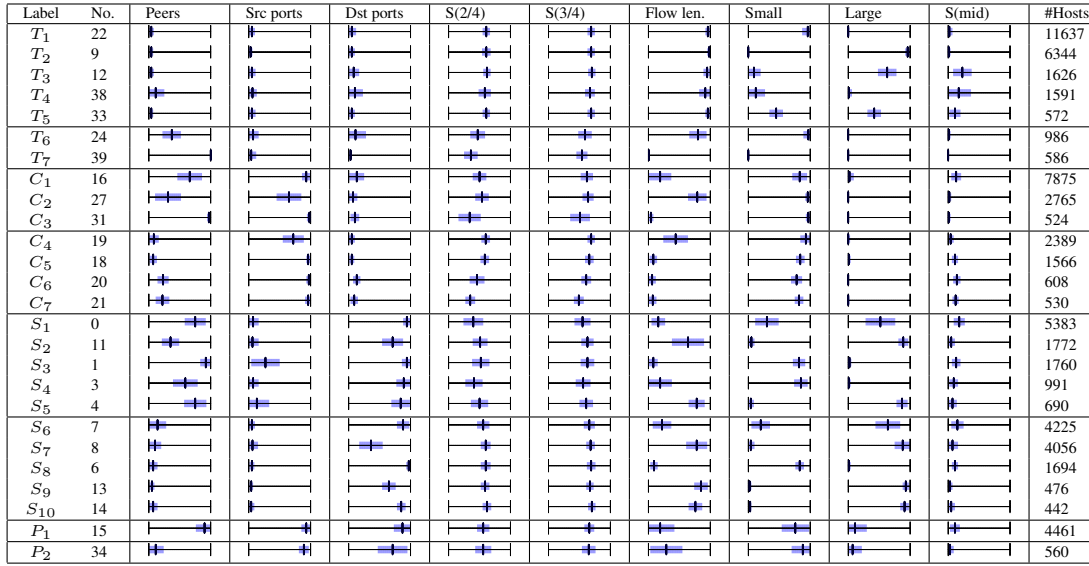


Figure 6. **Features of the identified clusters.** For each cluster are displayed labels given by trace labeling, (No. is an automatic identifier (No.) output by the algorithm) and its nine features computed from the traces. For each feature, the means and variances computed over all the hosts belonging to this particular cluster are graphically displayed on a scale for 0 (left) to 1 (right): the means are the thick vertical bars and the variances are shown with the grey area around the means. Finally, the number of host (#Hosts) in each cluster is provided in the last column.

by taking into account NAT mechanism.

From that point, the clusters found will be described in terms of their traffic content as found by manual inspection of the traces, before we turn in 5.4 to the cross-validation with other automated classifiers.

### 5.3. Identified clusters

Fig. 5 shows three clusters (chosen for the sake of the example) as projections onto the subspace spanned by the three first features (high-dimensionality precludes any graphical representation of the 9D space). These projections illustrate that clusters display a significant variety in shapes, many being elongated manifolds, and that they are likely to partially superimpose in any projection subspace. This hence reinforces the conviction that higher dimension representation spaces are needed for valid clustering, and that the MST-based technique makes sense to find clusters with such shapes.

Fig. 6 displays the connection features (in mean and variance) of the most populated clusters obtained from the proposed host MST-based clustering technique. Combining the trace labeling and the analyses of the similarity of the values taken by the features for each cluster, enables us to group and label them into classes of behaviors: letters correspond to different kinds of port usages (while No. was the automatic number given by the algorithm). Clusters labeled as  $T$  (for Transfer) consist of hosts whose traffic uses few ports on both sides. Servers ( $S$  clusters) send packets to a large number of ports, from a limited number of ports (e.g., web servers send packets always from port 80). Conversely, clients ( $C$  clusters) send packets from many ports to a limited numbers of dst ports. They are further



Label	No.	HTTPr	HTTPa	P2P	Ping	SYN	SMTPr	SMTPa	DNSr	DNSa	SSHr	SSHa	Mix	#Hosts
$T_1$	22	<b>6771</b>	121	<b>3357</b>	427	1	3	59	55	53	46	24	41	11637
$T_2$	9	3	<b>5581</b>	364	0	0	112	0	0	0	0	8	5	6344
$T_3$	12	16	<b>539</b>	<b>802</b>	9	0	7	0	0	0	3	4	14	1626
$T_4$	38	2	197	<b>892</b>	250	0	6	0	0	43	2	16	16	1591
$T_5$	33	7	22	<b>382</b>	13	0	6	0	0	0	2	8	15	572
$T_6$	24	51	21	41	<b>622</b>	0	0	16	133	58	2	1	7	986
$T_7$	39	0	0	<b>583</b>	1	0	0	0	0	0	0	0	0	586
$C_1$	16	<b>6138</b>	0	130	3	18	115	0	119	0	43	2	<b>1003</b>	7875
$C_2$	27	<b>2271</b>	2	215	16	0	1	1	37	0	12	0	57	2765
$C_3$	31	69	0	0	78	<b>220</b>	11	0	83	0	0	0	25	524
$C_4$	19	<b>2057</b>	4	144	1	3	18	0	5	0	1	2	49	2389
$C_5$	18	<b>751</b>	0	248	0	3	49	0	1	0	17	0	151	1566
$C_6$	20	<b>147</b>	0	60	0	10	0	0	1	0	1	0	<b>309</b>	608
$C_7$	21	<b>224</b>	0	30	0	8	2	0	0	0	3	0	<b>193</b>	530
$S_1$	0	0	<b>4648</b>	171	0	0	1	0	0	16	0	2	340	5383
$S_2$	11	0	<b>1637</b>	65	0	0	2	0	0	0	0	3	22	1772
$S_3$	1	12	<b>369</b>	257	11	0	0	<b>442</b>	212	29	1	60	337	1760
$S_4$	3	14	<b>221</b>	193	6	1	0	<b>309</b>	14	124	0	26	47	991
$S_5$	4	7	<b>561</b>	47	0	0	10	0	0	0	1	2	19	690
$S_6$	7	0	<b>3849</b>	45	0	0	1	0	0	3	0	2	123	4225
$S_7$	8	17	<b>3578</b>	191	0	0	63	0	0	0	0	4	32	4056
$S_8$	6	0	302	33	0	0	0	116	0	37	0	<b>1136</b>	17	1694
$S_9$	13	0	<b>455</b>	7	0	0	0	0	0	0	0	0	3	476
$S_{10}$	14	0	<b>421</b>	11	0	0	0	0	0	0	0	0	3	442
$P_1$	15	<b>719</b>	186	<b>523</b>	12	44	111	272	239	38	0	29	<b>1922</b>	4461
$P_2$	34	9	5	<b>235</b>	0	15	5	0	1	0	0	5	<b>251</b>	560

Figure 7. **Cross-validation of the classification with port-based analysis.** The classes from port-based classifier are in columns, the clusters from the MST-based method are in lines. For each cluster discussed in the text (see Section 5.3), whose Labels as used in Fig. 6 are given in the first column (with the identifier No. output by the procedure), is shown the number of hosts falling into the different classes of a port-based classifier. This port-based classifier identifies types of traffic using only port numbers (or protocol ICMP for the Ping class); in case of Mix traffic, the rule to decide in which class the host falls in is explained in Section 5.4, paragraph I. The last column, #Hosts, is the total number of host in the cluster. Hosts in clusters  $T$  have mostly simple connections; in clusters  $S$  (respectively  $C$ ) are servers (resp. clients) of HTTP transfer. Clusters  $P$  group hosts doing P2P (often hidden). More details on these clusters are given in Section 5.3, and more details on the cross-validation are in Section 5.4. The numbers in bold are the most numerous components in the clusters; a general view of the cross-classification is given by these numbers mainly: they show that the table is sparse, each cluster of the MST-based method displaying only one or two types of traffic if identified by ports. Finally, when a network traffic expert looks carefully at the traffic of each host, the clusters are usually more meaningful than the simple port-based analysis.

divided into 2 groups depending on their number of peers. Clusters  $P$  (for P2P) group hosts using a large number of both dst and src ports.

As a first observation, let us note that a number of MST-based clusters gather two or more protocols (as seen by labeling of the trace) and conversely that some such protocols are split into several MST clusters. This helps grouping the clusters together. Let us detail the major classes and their differences.

**Clusters**  $T_1 - T_5$  mostly are one-to-one connections, using usually a single port. The inspection of the 5 largest such clusters shows that their dominant traffic consist of a mix of HTTP and of P2P, most of them characterized by long flows. Deeper analyses reveal that they are split on the basis of packet sizes:  $T_1$  contains mostly small packets, whereas those of  $T_2$  are large. This discriminates the two sides of a downloading activity (be it through HTTP or P2P protocols): the former  $T_1$  corresponding



to signaling packets, hence receiving hosts, the latter  $T_2$  to actual data packets, hence senders. Host **A** from Fig. 3 is in  $T_1$ .  $T_3$  to  $T_5$  include midsize packets, related to file requests and information exchange on chunks.  $T_4$  and especially  $T_5$  show low values of entropy on those midsize packets, often a sign of (old) P2P protocols or games (fix medium-sized packets). This is confirmed by port analysis: classical port numbers (for instance, as collected in [35]) are associated to P2P that do not use dynamic port numbers, e.g., 1214 for Kazaa, 1337 for WASTE, 6346 and 6347 for Gnutella. Clusters  $T_6 - T_7$  contain hosts connected to a large number of peers with fixed ports. Cluster  $T_7$  groups hosts using P2P protocols without dynamic ports, while in  $T_6$ , hosts display intense Ping and/or DNS traffic: many of those are related to anomalies [34]. In clusters  $T$ , Ping traffic can be found because ICMP packets do not use ports (it only adds one to the number of ports). Most of these are probably anomalies (some Ping floods for  $T_1$  and  $T_4$ , many Ping scans or results of spoofed flooding for  $T_6$ ), another explanation could be experiments with radars and traceroute, considering the academic nature of the network on the Japan side.

**Clusters S and C** gather hosts whose dominant behavior is sender or client of HTTP, respectively sending ACK or requests.  $S_1$  to  $S_5$  are popular servers, with many peers.  $S_6$  to  $S_{10}$  communicate with a lower number of IPs. Accordingly,  $C_1$  to  $C_3$  are clients that connect to many different servers, which can be explained, for example, by web surfing, while  $C_4$  to  $C_7$  connect to less servers, and probably seek precise information. Cluster  $C_3$  is more peculiar is that it comprises many SYN, Ping and DNS traffic that are analyzed as activities from viruses and worms, or netscans. It corresponds to an anomaly cluster, and  $C_7$  seems to be in the same case.

**Clusters P** contain many hosts doing P2P in a *hidden manner* [36], with ports that dynamically vary in the high number range. Typical P2P traffic is not as common on this transpacific link as it could be on other networks, as firstly many P2P applications avoid linking peers with a high RTT (the case for this backbone link), and secondly the differences in language and in popularity of the various P2P protocols between Japan and the US limit P2P communications on this link. Still,  $P_1$  matches the typical behavior of leechers connecting to many peers and requesting chunks or sending acknowledgments, hence using many small and mid-size packets. P2P exchanges are often performed as background activity, and this explains why many hosts in  $P_1$  display a mix of activities, for instance being web clients at the same time. Host **B** from Fig. 3 is a typical example of  $P_1$  (its Ping-flood activity would be exhibited by classification from its behavior as a receiver).

The discussions above intend to illustrate that host MST-based clustering procedure offer a rich and fine classification of the host behaviors, that would be finer than what a simple port-based classifier does. For instance, HTTP traffic is split into different S or T clusters, which identifies significant differences in the usage of the same protocol in real-traffic. The same holds for hosts doing P2P or with a mixture of traffic. Several clusters are often associated to a kind of transport-level behavior, and they differ one from another due to the functional or social behavior of the host (server vs. client, one-to-one or many-to-one connections,...) Finally, our finding is that, in a longitudinal study of the traffic, the classes are quite stable over several weeks. The recommendation would be to update the classification every couple of months or so. Only in case of anomaly outbreaks (e.g., a new major worm or virus), or over a time-frame of several months the clusters would change, as the usages and applications on the Internet change.

#### 5.4. Cross-validation with other automated classifiers

To better understand the benefits of the proposed classification method, a comparison to known classification methods is done in the manner of cross-validation of the results.

**I) Cross-validation with a Port-based classifier.** Instead of the labeling by an network expert combining study of ports, some heuristic rules and an anomaly detection step, one could use a classical port-based classifier, known to be failing in many cases but still used as a simple, admitted method that is enough for legacy traffic [1]. Still, one heuristic rule is added to port classification: The ratio of SYN flags in flows is used to detect SYN floods (this is made necessary by the large number of SYN flooding anomalies detected in the MAWI traces [34]). This port-based and SYN-flag classification procedure (developed first for [34]) labels each host according to the most important class of flows that it sends (or receives). For most hosts, a dominant class is found. However, whenever more than a single class of traffic accounting for at least 20% of the packets sent (or received), or when the dominant class account for less than 50%, host is classified *Mix* traffic. This procedure is used here as a port-based classification of the behavior of hosts: 250 different classes are obtained, and we discuss here the most frequently observed as representative: HTTPr or HTTPa (respectively requests/answers), P2P, Ping, SYN, SMTP(r/a), DNS(r/a), SSH(r/a) or *Mix*.

The cross-validation between the MST-based clustering approach and the port-based (plus SYN-flag) classification procedure is reported in Fig. 7. The sparsity of this table provides us with a first satisfactory conclusion: Despite the fact that traffic information used in each approach are different and independent, the match in host classification is high. This reflects the adequacy of the proposed procedure. One can go back to the description of the identified clusters in 5.3 and check that the discussion about the nature of each clusters is coherent with the class given by the port-based classification for the majority of the hosts in a given cluster. For instance,  $T_1$  is mostly requests in HTTP and P2P whereas  $T_2$  groups hosts that answers over HTTP. Host in  $T_3$  and  $T_4$  are doing P2P plus some web browsing. The client/server distinction in clusters  $C$  and  $S$  is particularly well reflected in Fig. 7 by looking at columns HTTPr/a. Clusters  $P$ , containing a high number of hosts doing P2P performed in background activities at the same time as other communication, are not easily classified from Ports only as doing P2P; hence, they are spread in many other categories and only the MST-based clustering on connection patterns identify them as such. Finally, for clusters containing hosts associated to a high proportion of anomalies ( $T_4$ ,  $T_6$ ,  $C_3$ ,  $C_6$ ,  $C_7$ ), the port-based classification reflects only partially this fact. Ping or SYN-flooding is detected from time to time (thanks to the additional SYN-flag rule) but the MST-based classifier seems to be more sensitive by isolating the anomalous hosts from other ones displaying the same activity but the anomalies. A last comment is that there is not a large number of hosts displaying unusual or weird behaviors in the traces (e.g., when a host is doing P2P of HTTP in addition to scans, anomalies, ...). Almost all of them would fall in the category of *Mix* traffic for this classification and this group accounts for less than 8% of the total hosts reported in Fig. 7. As some of these host are grouped in clusters where many anomalous behaviors were found (clusters  $C_6$ ,  $C_7$  or  $P$ ), the remaining hosts in the *Mix* category outside these specific clusters are not numerous. All in all, if there are outliers because if weird or anomalous behaviors of hosts, there are not a major part of the traffic.

**II) Cross-validation with BLINC (transport-level part) (of [9]).** Fig. 8 displays a cross-validation between the proposed procedure and the BLINC classifier on the transport-layer level (because of the absence of payload in the traces). Let us comment the table. Again, this table is mostly sparse if one looks globally at the major proportions of traffic of each cluster (the ones in bold, consisting in more than 10% of each class). Clusters  $T$  are often classed by BLINC in “Unknown” traffic (often, round half of the hosts), despite the fact that, as already noted, hosts in these groups are mostly doing HTTP or P2P transfers with a small number of peers. This difficulty of BLINC is due to it failing partially on backbone links [1, 10, 11], and because P2P traffic in these groups is very often disguised. Clusters  $T_1$  and  $T_2$  contain identical traffic but for being on the receiver and servers sides (respectively); BLINC

Label	WEB	UNKN	P2P	MAIL	DNS	FTP	SCAN	CHAT	STREAM	#Hosts
$T_1$	<b>60.88</b>	<b>22.04</b>	<b>15.03</b>	0.36	0.86	0.72	0.00	0.02	0.08	11637
$T_2$	7.40	<b>89.95</b>	1.33	0.92	0.27	0.14	0.00	0.00	0.00	6344
$T_3$	8.29	<b>62.10</b>	<b>27.27</b>	0.60	0.67	1.00	0.00	0.00	0.07	1626
$T_4$	<b>10.98</b>	<b>56.94</b>	<b>25.58</b>	1.01	5.06	0.43	0.00	0.00	0.14	1591
$T_5$	3.27	<b>43.59</b>	<b>49.35</b>	0.52	0.92	1.05	0.00	0.00	1.18	572
$T_6$	<b>10.41</b>	<b>58.04</b>	8.52	5.99	<b>16.72</b>	0.00	0.00	0.32	0.00	986
$T_7$	1.45	<b>49.89</b>	<b>42.84</b>	0.22	2.57	0.22	0.00	0.00	2.80	586
$C_1$	<b>90.82</b>	1.18	3.05	2.74	2.14	0.07	0.00	0.00	0.00	7875
$C_2$	<b>90.81</b>	4.10	3.15	0.63	0.75	0.47	0.00	0.00	0.04	2765
$C_3$	<b>15.59</b>	<b>50.61</b>	5.67	2.83	<b>25.10</b>	0.20	0.00	0.00	0.00	524
$C_4$	<b>89.75</b>	5.40	3.37	1.02	0.23	0.23	0.00	0.00	0.00	2389
$C_5$	<b>92.39</b>	1.52	1.85	1.05	3.19	0.00	0.00	0.00	0.00	1566
$C_6$	<b>34.25</b>	<b>33.52</b>	<b>31.31</b>	0.00	0.92	0.00	0.00	0.00	0.00	608
$C_7$	<b>96.30</b>	0.00	0.34	1.18	2.19	0.00	0.00	0.00	0.00	530
$S_1$	<b>89.86</b>	3.51	3.30	2.12	0.75	0.16	0.00	0.29	0.00	5383
$S_2$	<b>91.74</b>	5.25	1.93	1.03	0.00	0.06	0.00	0.00	0.00	1772
$S_3$	<b>30.96</b>	5.36	<b>19.08</b>	<b>27.53</b>	<b>15.56</b>	0.00	0.00	1.51	0.00	1760
$S_4$	<b>26.70</b>	<b>18.33</b>	7.89	<b>32.40</b>	<b>12.38</b>	0.12	0.00	2.18	0.00	991
$S_5$	<b>81.25</b>	5.07	6.25	4.90	1.69	0.51	0.00	0.00	0.34	690
$S_6$	<b>95.02</b>	4.03	0.58	0.20	0.13	0.05	0.00	0.00	0.00	4225
$S_7$	<b>78.50</b>	<b>18.72</b>	1.80	0.55	0.39	0.04	0.00	0.00	0.00	4056
$S_8$	<b>27.38</b>	<b>56.89</b>	1.69	<b>10.13</b>	3.91	0.00	0.00	0.00	0.00	1694
$S_9$	<b>50.61</b>	<b>25.31</b>	<b>23.06</b>	0.82	0.20	0.00	0.00	0.00	0.00	476
$S_{10}$	<b>63.39</b>	<b>24.69</b>	6.49	5.02	0.42	0.00	0.00	0.00	0.00	442
$P_1$	<b>51.47</b>	1.11	<b>25.40</b>	<b>13.71</b>	6.76	1.45	0.00	0.00	0.10	4461
$P_2$	1.64	<b>54.91</b>	<b>37.64</b>	0.55	0.00	4.55	0.00	0.00	0.73	560

Figure 8. **Cross-validation of the classification with BLINC.** The classes from BLINC are in columns, the clusters from the MST-based method are in lines. For all the clusters of Fig. 6 and Fig. 7 (whose Labels are recalled in the first column), the *percentage* of hosts in the cluster falling into the different classes of the BLINC classifier is shown. For BLINC, the class UNKN is for “Unknown”. The last column, #Hosts, is the total number of host in the cluster. The numbers in bold are the most numerous components in the clusters (others being always less than 10% of the hosts in this cluster). The major comment is the sparseness of this table of cross-classification: Both methods often agree to class hosts under similar categories. However, the MST-based method seems to bring more details in that it breaks a given type of hosts (for instance the ones doing mostly WEB) in several classes according to their behavior with only simple (often one-to-one) connections (clusters  $T$ ), or as clients ( $C$ ) or servers ( $S$ ) in many connections. Also, the proportion of “Unknown” is important in BLINC (because of the difficulties it has on backbone traffic). More detailed comments are given in the text, Section 5.4.

identifies correctly in  $T_1$  this mixture of WEB and P2P traffic whereas for  $T_2$  it ends mostly in the “Unknown” class. We suppose that it is the lack of bidirectionality and of payload in the traces that confuses BLINC. This shows that our procedure is robust to the absence of such information.  $T_3$  is correctly seen by BLINC as well as the other classifiers as a group of hosts active on P2P (with only few peers). The same holds for server and client clusters ( $S$  and  $C$ ) shown here: in many of them, the large majority of hosts are correctly labelled by BLINC as doing WEB. Others are labelled by BLINC

with high proportion of “Unknown”. Note here the refinement given by the MST-based method, that provides the means to decide whether they are servers or clients, so giving a functional-level view of the hosts. Cluster  $P_1$  of hosts with P2P activities (with many peers) is again spread from BLINC between WEB and P2P mostly, whereas for the hosts in  $P_2$  which are doing P2P as well, the class provided by BLINC are “Unknown” or P2P. Again, this is associated to the difficulty of BLINC of labeling correctly P2P on a backbone link. Hosts in cluster  $C_6$  are spread between WEB, “Unknown” and P2P whereas the Port-based analysis was analyzing them as doing a mixture of traffic. A strength of the MST-based clustering method is to be able to distinguish in a separate trace such a group of hosts with Mix traffic, without putting it in the same class as hosts with the simpler traffic profile (e.g., cluster  $C_5$ ). Finally, cluster  $C_3$  deserves a specific comment: it was told to group hosts with anomalous traffic (SYN and Ping flooding, DNS anomalies). With the BLINC procedure, hosts are spread in WEB, “Unknown” and DNS classes; the MST based procedure described here adds the information that all these hosts, despite their other activities, can be grouped as being a not so small cluster with equivalently anomalous activities. This shows the advantage of the unsupervised nature of the method: a cluster of anomalous hosts is identified without a priori related neither to its existence, nor to its characteristics.

### 5.5. Computation load

Computational load wise, there are two different phases in the proposed classification procedure. First, the extraction of the cluster itself requires to process a large enough set of data (here, 15min of traffic collected over 7 different days). This is the most computationally intensive phase that remain however very reasonable even for the case of the MAWI backbone traffic analyzed here, and in any case, much lower as compared to the actual duration of analyzed data. All the results reported here were computed on a standard desktop computer (with a G5 processor). Extraction of the features describing the connection patterns were taking between 2 and 3 minutes per trace of 15 minute duration. For instance, if one wants to use 3 months of traffic (with 15min per day) as the basic dataset for finding clusters, this part of the method should take less than 2 hours of computation. Then the computation of the MST and the clustering were done in a couple of minutes from these. The number of clusters obtained and kept were up to 200; this number has to be decided mostly depending on the amount of time an expert will then spend on traces to analyze them. The second step is the classification of new traffic: it amounts to computing the 9 feature for each host within a chosen analysis window, followed by the calculation of the distances to clusters. This phase hence shows a very low computational cost and can hence be implemented real time, i.e., almost immediately at the end of the analyzing window: as told, this takes 2 to 3 minutes to compute them once a 15 min traffic trace is acquired, and the classification is immediate. These figures are given for the typical traces in MAWI dataset for 2008: there are usually between  $3 \cdot 10^5$  and  $6 \cdot 10^5$  different IP addresses in a trace,  $5 \cdot 10^5$  and  $1 \cdot 10^6$  different flows, around 400 MB of trace without payload (that would be larger than 10 GB with payloads). The computational cost of the proposed method appears to be reasonable enough for it being applicable in an operational context.

## 6. Conclusion

The key points of the present contributions are threefold. First, an original 9D feature vector has been defined and shown to characterize accurately and efficiently traffic at the host behavior. It is backbone traffic classification oriented: It accommodates large data sets, avoid the use of payload

and bidirectionality. The dimension of this feature vector has been kept low (9D) thanks to the meaningfulness and richness of the information each feature convey: It probes the host network connectivity, connection dispersion and traffic content. Second, classification is based on a Minimum Spanning Tree approach: It is unsupervised hence avoids the recourse to training sets and *ground truth* knowledge; it assumes a priori neither a fixed number of clusters, nor the convexity of their shapes; it is data-adaptive, notably it accommodates new classes of traffic not observed earlier. Third, its feasibility and performance are assessed on a one year real traffic dataset collected over a transpacific backbone (MAWI dataset). Cross-validation against classical port-based classifiers or transport layer based procedures proposed in the literature enables to assess the relevance and potential of the classification procedure proposed here. This contribution has hence shown that combining this relevant 9D feature vector, characterizing the connection patterns of a host, to the MST clustering technique yields an unsupervised and meaningful classification of host behaviors.

This approach will require further developments for the rationale and the automation of parameter tuning. Still the parameters to tune remain limited in number and the global performance shows little sensitivity to their precise values. As compared to any rule-based classifier, the proposed host MST-based clustering procedure hence requires little parameter tuning. Results presented here on the different behaviors of hosts have been obtained on traffic of the MAWI dataset in 2008; when doing preliminary analyses of other years of the MAWI dataset, the reported classes appear to be mostly stable along time (up to significant events on the Internet such as the Sasser worm outbreak of 2004-2005, as already noted in the longitudinal analysis of [13]).

The characterization of the hosts was here developed mostly using their behavior as source of traffic. As already mentioned, another point of view is to study them as destination of traffic (computing the connection features from packets having their IP as IPdst). Similar results are obtained in our study of this question: hosts are usually seen as having the same role, even though by mostly seeing traffic in the reverse direction of connections. However, specific results were not shown on that respect because it would not bring more insight by itself. More than merely showing similar results in the other direction, the important work to do is to jointly use both points-of-view. It would be of utmost benefit to understand the behavior of a given host with finer details. However, such an automated fusion of information obtained on a host as source or destination is not conducted here as it would be a new research question per se, and part of a larger task. Obviously, the joint use of both the proposed host MST-based clustering and other procedures such as the port-based and SYN-flag procedure (or the BLINC methodology) would also take advantages of the different nature of the analyzed information, in a collaborative manner, to provide practitioners with a clear yet automated view of the content of the traffic at the host level.

**Acknowledgments.** The authors would like to thank Hyunchul Kim (Seoul National University), Thomas Karagiannis (Microsoft Research) and Dhiman Barman (UC Riverside, now at Juniper Networks) for providing access to an implementation of BLINC.

## REFERENCES

1. H. Kim, K. Claffy, M. Fomenkov, D. Barman, M. Faloutsos, and K. Y. Lee, "Internet Traffic Classification Demystified: Myths, Caveats, and the Best Practices," *ACM CoNEXT 2008*, December 2008.
2. L. Bernaille and R. Teixeira, "Early Recognition of Encrypted Applications," *PAM 2007*, pp. 165–175, April 2007.
3. A. W. Moore and D. Zuev, "Internet Traffic Classification Using Bayesian Analysis Techniques," *ACM SIGMETRICS'05*, pp. 50–60, June 2005.

4. R. Sadoddin and A. A. Ghorbani, "A comparative study of unsupervised machine learning and data mining techniques for intrusion detection," *MLDM '07*, pp. 404–418, 2007.
5. A. Lazarevic, A. Ozgur, L. Ertoz, J. Srivastava, and V. Kumar, "A comparative study of anomaly detection schemes in network intrusion detection," *SIAM'03*, 2003.
6. J. Erman, M. Arlitt, and A. Mahanti, "Traffic Classification Using Clustering Algorithms," *ACM SIGCOMM'06 Mininet workshop*, pp. 281–286, September 2006.
7. K. Cho, K. Mitsuya, and A. Kato, "Traffic Data Repository at the WIDE Project," *USENIX 2000 FREENIX Track*, June 2000.
8. M. Roesch, "Snort - Lightweight Intrusion Detection for Networks," *LISA'99: Proceedings of the 13th USENIX conference on System administration*, pp. 229–238, November 1999.
9. T. Karagiannis, K. Papagiannaki, and M. Faloutsos, "BLINC: Multilevel Traffic Classification in the Dark," *ACM SIGCOMM'05*, pp. 229–240, August 2005.
10. G. Szabo, I. Szabo, and D. Orincasy, "Accurate traffic classification," in *IEEE Conf. WoWMoM*, 2007.
11. W. John and S. Tafvelin, "Heuristics to Classify Internet Backbone Traffic based on Connection Patterns," in *ICOIN'08*, Jan. 2008.
12. I. Trestian, S. Ranjan, A. Kuzmanovic, and A. Nucci, "Unconstrained Endpoint Profiling (Googling the Internet)," *ACM SIGCOMM'08*, pp. 279–290, August 2008.
13. P. Borgnat, G. Dewaele, K. Fukuda, P. Abry, and K. Cho, "Seven Years and One Day: Sketching the Evolution of Internet Traffic," *IEEE INFOCOM 2009*, pp. 711–719, April 2009.
14. J. McHugh, R. McLeod, and V. Nagaonkar, "Passive Network Forensics: Behavioural Classification of Network Hosts Based on Connection Patterns," *ACM SIGOPS Volume 42 Issue 3*, pp. 99–111, April 2008.
15. K. Xu, Z.-L. Zhang, and S. Bhattacharyya, "Profiling internet backbone traffic: behavior models and applications," *ACM SIGCOMM'05*, pp. 169–180, 2005.
16. T. Cover and J. Thomas, *Elements of Information Theory*. John Wiley, 1991.
17. A. Lakhina, M. Crovella, and C. Diot, "Mining Anomalies Using Traffic Feature Distributions," *ACM SIGCOMM'05*, pp. 217–228, August 2005.
18. W. John and S. Tafvelin, "Analysis of Internet Backbone Traffic and Header Anomalies observed," *ACM IMC'07*, October 2007.
19. Y.-D. Lin, C.-N. Lu, Y.-C. Lai, W.-H. Peng, and P.-C. Lin, "Application Classification Using Packet Size Distribution and Port Association," *Journal of Network and Computer Applications*, 2009, to appear.
20. A. Chen, L. E. Li, and J. Cao, "Tracking Cardinality Distributions in Network Traffic," *IEEE INFOCOM 2009*, pp. 819–827, April 2009.
21. A. Kumar and J. Xu, "Sketch Guided Sampling – Using On-Line Estimates of Flow Size for Adaptive Data Collection," *IEEE INFOCOM 2006*, April 2006.
22. David J. Marchette, *Random Graphs for Statistical Pattern Recognition*. Wiley Series in Probability and Statistics, 2004.
23. R. L. Graham and P. Hell, "On the history of the minimum spanning tree problem," *Annals of the History of Computing*, vol. 7, no. 1, pp. 43–57, Jan. 1985.
24. S. Grikschat, J. A. Costa, A. O. Hero, and O. Michel, "Dual rooted-diffusions for clustering and classification on manifolds," *IEEE ICASSP'06*, May 2006.
25. L. Galluccio, O. Michel, P. Comon, A. O. Hero, and M. Klinger, "Combining multiple partitions created with a graph-based construction for data clustering," *IEEE Int. Workshop on Machine Learning for Signal Processing*, September 2009.
26. A. O. Hero and O. Michel, "Asymptotic theory of greedy approximations to minimal  $k$ -point random graphs," *IEEE Transactions on Information Theory*, vol. 45, pp. 1921–1939, 1999.
27. O. Michel, P. Flandrin, and A. O. Hero, "Entropie conditionnelle de Rényi et segmentation," in *Proceedings of the Colloque GRETSI*, Toulouse, France, 2001, pp. 665–668.
28. L. Golshani, E. Pasha, and G. Yari, "Some properties of Rényi entropy and Rényi entropy rate," *Information Sciences*, vol. 179, pp. 2426–2433, 2009.
29. V. Olman, D. Xu, and Y. Xu, "Identification of regulatory binding sites using minimum spanning trees," in *Proceeding of the 8th Pacific Symposium on Biocomputing*, vol. 3, Lihue, Hawaii, USA, 2003, pp. 327–338.
30. A. Y. Ng, M. I. Jordan, and Y. Weiss, "On spectral clustering: Analysis and an algorithm," in *Advances on Neural Information Processing Systems*, vol. 14, 2001.
31. S. Lafon and A. B. Lee, "Diffusion maps and coarse-graining: a unified framework for dimensionality reduction, graph partitioning and data set parameterization," *IEEE Transactions on Pattern Analysis and Machine Intelligence*, vol. 28, no. 9, pp. 1393–1403, 2006.
32. L. Galluccio, O. Michel, P. Comon, E. Slezak, and A. O. Hero, "Initialization free graph based clustering," Laboratoire I3S, CNRS-Université de Nice-Sophia Antipolis, 06903 Sophia Antipolis, France, Tech. Rep. I3S/RR-2009-08-FR, 2009.
33. D. Maurizio and J. Wolfgang, 2010, <http://www.caida.org/research/traffic-analysis/asymmetry/>.
34. G. Dewaele, K. Fukuda, P. Borgnat, P. Abry, and K. Cho, "Extracting Hidden Anomalies using Sketch and Non Gaussian Multiresolution Statistical Detection Procedure," *ACM SIGCOMM LSAD'07*, pp. 145–152, August 2007.
35. R. Akerman, 2007, <http://www.chebucto.ns.ca/~rakerman/port-table.html>.
36. T. Karagiannis, A. Broido, N. Brownlee, K. Claffy, and M. Faloutsos, "Is P2P dying or just hiding?" *IEEE GLOBECOM'04*, pp. 1532–1538, November–December 2004.