



HAL
open science

Kondo screening by the surface modes of a strong topological insulator

Edmond Orignac, Sébastien Burdin

► **To cite this version:**

Edmond Orignac, Sébastien Burdin. Kondo screening by the surface modes of a strong topological insulator. *Physical Review B: Condensed Matter and Materials Physics (1998-2015)*, 2013, 88 (3), pp.035411 (1-17). 10.1103/PhysRevB.88.035411 . ensl-00842732

HAL Id: ensl-00842732

<https://ens-lyon.hal.science/ensl-00842732v1>

Submitted on 8 Mar 2018

HAL is a multi-disciplinary open access archive for the deposit and dissemination of scientific research documents, whether they are published or not. The documents may come from teaching and research institutions in France or abroad, or from public or private research centers.

L'archive ouverte pluridisciplinaire **HAL**, est destinée au dépôt et à la diffusion de documents scientifiques de niveau recherche, publiés ou non, émanant des établissements d'enseignement et de recherche français ou étrangers, des laboratoires publics ou privés.

Kondo screening by the surface modes of a strong topological insulator

E. Orignac

Laboratoire de Physique de l'École Normale Supérieure de Lyon, CNRS UMR5672, 46 Allée d'Italie, F-69364 Lyon Cedex 7, France

S. Burdin

Univ Bordeaux, LOMA, UMR 5798, F-33400 Talence, France and CNRS, LOMA, UMR 5798, F-33400 Talence, France

(Received 24 April 2013; published 8 July 2013)

We consider a magnetic impurity deposited on the surface of a strong topological insulator and interacting with the surface modes by a Kondo exchange interaction. Taking into account the warping of the Fermi line of the surface modes, we derive a mapping to an effective one-dimensional model and show that the impurity is fully screened by the surface electrons except when the Fermi level lies exactly at the Dirac point. Using an Abrikosov fermion mean-field theory, we calculate the shape of the electronic density Friedel oscillation resulting from the presence of the Kondo screening cloud. We analyze quantitatively the observability of a sixfold symmetry in the Friedel oscillations for two prototype compounds: Bi_2Se_3 and Bi_2Te_3 .

DOI: [10.1103/PhysRevB.88.035411](https://doi.org/10.1103/PhysRevB.88.035411)

PACS number(s): 73.20.At, 72.15.Qm, 75.20.Hr, 68.37.Ef

I. INTRODUCTION

Topological insulators are a new class of materials, with an insulating bulk and a conducting surface.¹⁻³ The existence of four topological invariants guarantees the stability of these surface states against perturbations.⁴⁻⁶ Furthermore, the topological invariants permit one to distinguish two types of topological insulators: the weak topological insulators and the strong topological insulators. In a strong topological insulator, the surface modes at low energy form an odd number of Dirac cones. This is to be contrasted with a strictly two-dimensional conductor such as graphene,⁷ where the Nielsen-Ninomiya theorem⁸ only permits an even number of Dirac cones: the presence of the gapped bulk is crucial to the formation of an odd number of Dirac cones. Experimentally, the material $\text{Bi}_x\text{Sb}_{1-x}$ is a strong topological insulator with three Dirac cones,⁹ while Bi_2Se_3 , Bi_2Te_3 , and Sb_2Te_3 are strong topological insulators with a single Dirac cone.^{10,11} In the case of Bi_2Te_3 , a significant hexagonal Fermi line warping is present.¹¹ More recent examples of topological insulator materials are TlBiSe_2 ,¹² strained HgTe ,^{13,14} $\text{Bi}_2\text{Te}_{1.6}\text{S}_{1.4}$,¹⁵ PbBi_2Te_4 ,¹⁶ $\text{Pb}(\text{Bi}_{1-x}\text{Sb}_x)_2\text{Te}_4$,¹⁷ $\text{Bi}_2\text{Se}_2\text{Te}$, $\text{Bi}_2\text{Te}_2\text{Se}$, and GeBi_2Te_4 .¹⁸ It has also recently been proposed on the basis of band structure calculations that the ternary compound LiAuSe ¹⁹ and the cerium filled skutterudites²⁰ $\text{CeOs}_4\text{As}_{12}$ and $\text{CeOs}_4\text{As}_{12}$ could be topological insulators. A recent review of known topological insulators can be found in Ref. 21. In all these systems, a strong spin-orbit coupling is present, and in the surface states the helicity, i.e., the sign of the spin projection of the quasi-particle spin on the quasi-momentum, is fixed. An interesting theoretical question is then whether the Kondo effect²²⁻²⁵ in the surface modes is affected by a fixed helicity. In particular, one would like to know whether a conventional Kondo effect takes place, or whether the fixed helicity constraint gives rise to unconventional Kondo fixed points. In the case of two-dimensional topological insulators,²⁶ the question was addressed,²⁷ and it was shown that a conventional Kondo effect would take place, leading to a suppression of the backscattering of the edge states by magnetic impurities. In the case of a three-dimensional topological insulator, the Anderson model was considered both in the absence²⁸⁻³⁰ and in the presence³¹

of Fermi surface warping. Within a variational trial wave function method, it was found that the local moment would be fully quenched, but correlations would exist between the conduction electron spin and the spin of the local impurity.²⁸ Analogous results were obtained in a two-dimensional electron gas with Rashba and Dresselhaus spin-orbit couplings.³² In the case of a pure Dirac spectrum, a mapping on the one-dimensional Anderson model with a pseudogap in the hybridization function was obtained.^{29,30} It was concluded that away from the Dirac point the Kondo effect would take place, and the impurity would be fully screened, while at the Dirac point, the local moment would decouple.²⁹ The local density of states (LDOS), the local spin density of states (LSDOS), and the Friedel oscillations were also investigated³⁰ within a $U(1)$ slave-boson³³ mean-field theory. In Ref. 31, the Anderson model in a topological insulator with a Fermi surface warping was considered using the numerical renormalization group and the behavior of the LDOS was obtained. Experimentally, magnetic impurities such as manganese,³⁴ nickel, iron,³⁵⁻³⁷ cobalt,^{37,38} and gadolinium³⁹ have been deposited on the surface of topological insulators. It was found that the surface states were remarkably insensitive to the presence of both magnetic and nonmagnetic impurities.^{34,39} While the first result can be understood as a consequence of the suppression of backscattering, the second result is more surprising since magnetic impurities permit backscattering by flipping the electron spin.

Besides this single impurity behavior, it has been suggested theoretically that in a Kondo lattice at electronic half-filling, the Kondo interaction could help the formation of a topological insulator.⁴⁰⁻⁴³ There are indeed recent experimental indications that the Kondo insulator^{44,45} SmB_6 could be a topological insulator. This also lends support to the hypothesis that Kondo screening of magnetic impurities is compatible with the helical character of the surface states. An important technique to probe conducting surfaces is scanning tunneling microscopy (STM).^{46,47} This is particularly interesting in relation to the Kondo effect since STM measurements of the LDOS around a Kondo impurity located on the surface of a metal have already been performed,⁴⁸⁻⁵² and the influence of the Kondo resonance on the LDOS has been studied theoretically.⁵³ Since the surface

of a topological insulator is conducting, it can be probed by STM.^{54–60} The existing predictions for the LDOS caused by a Kondo impurity³¹ could thus be tested in that manner. Moreover, following the proposal of Ref. 61, integrating the measured LDOS would permit the measurement of the Friedel oscillations of the electron density induced by the Kondo screening cloud around the magnetic impurity.

In the present paper, we want to further analyze the Kondo effect of a magnetic impurity at the surface of a strong topological insulator with warping. In the first part, we reduce the Kondo Hamiltonian to a one-dimensional model which can be treated by integrability techniques. We find that a conventional Kondo effect is obtained, with the impurity screened by the surface modes unless the Fermi level is right at the Dirac point, in which case, because of the vanishing density of states, the impurity remains unscreened for weak Kondo coupling. In the second part, we calculate within an Abrikosov fermion mean-field theory⁶² the Friedel oscillations⁶¹ resulting from the existence of the Kondo screening cloud. For weak Fermi surface warping, we derive a perturbative expression of the density Friedel oscillations. In the third part we discuss the observability in STM measurements of the Friedel oscillations of electron density⁶¹ around an impurity in the specific cases of two prototype compounds: Bi₂Se₃ and Bi₂Te₃.

II. MAPPING TO A ONE-DIMENSIONAL MODEL

The free electrons Hamiltonian of the surface modes of a strong topological insulator with warping reads

$$\begin{aligned} H_0 &\equiv \sum_{\mathbf{k}, \alpha, \beta} c_{\mathbf{k}, \alpha}^\dagger \left[-i v_F \hat{z} \cdot (\boldsymbol{\sigma}_{\alpha\beta} \times \mathbf{k}) \right. \\ &\quad \left. + \frac{\lambda}{2} [(k_x + i k_y)^3 + (k_x - i k_y)^3] \sigma^z - \mu \delta_{\alpha\beta} \right] c_{\mathbf{k}, \beta} \\ &\equiv \sum_{\mathbf{k}, \alpha, \beta} c_{\mathbf{k}, \alpha}^\dagger \mathcal{H}_{\alpha\beta}^0(\mathbf{k}) c_{\mathbf{k}, \beta}, \end{aligned} \quad (1)$$

where $c_{\mathbf{k}, \alpha}$ annihilates a fermion of momentum \mathbf{k} and spin α , \hat{z} is the normal to surface of the topological insulator, $\boldsymbol{\sigma} = (\sigma^x, \sigma^y, \sigma^z)$ denotes the Pauli matrices, v_F is the Fermi velocity, λ is the warping, and μ is the chemical potential. In the case of Bi₂Se₃, one has⁶³ $v_F = 3.55 \text{ eV \AA}$ and $\lambda = 128 \text{ eV \AA}^3$. For Bi₂Te₃,^{11,64} one has $v_F = 2.55 \text{ eV \AA}$ and $\lambda = 250 \text{ eV \AA}^3$. In the following, we will study the effects induced by the presence of a magnetic quantum impurity. We take the position of the impurity as the origin of our coordinates so that the Kondo Hamiltonian describing the surface modes and their interaction with the impurity reads

$$H = H_0 + H_K \equiv H_0 + \frac{J_K}{L^2} \sum_{\mathbf{k}, \mathbf{k}', \alpha, \beta} \mathbf{S} \cdot c_{\mathbf{k}, \alpha}^\dagger \boldsymbol{\sigma}_{\alpha\beta} c_{\mathbf{k}', \beta}, \quad (2)$$

where J_K is the Kondo interaction, L the linear dimension of the (square) surface, and \mathbf{S} the impurity spin.

In the present section, we briefly review the eigenstates of the free electrons Hamiltonian (1). We will use a spinor notation to represent the Fermion annihilation and creation

operators:

$$\Psi(\mathbf{r}) = \begin{pmatrix} \psi_\uparrow(\mathbf{r}) \\ \psi_\downarrow(\mathbf{r}) \end{pmatrix} = \sum_{s=\pm} \int \frac{d^2\mathbf{k}}{(2\pi)^2} \psi_{\mathbf{k}}^s(\mathbf{r}) c_s(\mathbf{k}), \quad (3)$$

where the spinors $\psi_{\mathbf{k}}^s(\mathbf{r})$ are eigenstates of the first quantized Hamiltonian and $\{c_s(\mathbf{k}), c_{s'}(\mathbf{k}')\} = (2\pi)^2 \delta_{s,s'} \delta(\mathbf{k} - \mathbf{k}')$. Introducing the polar coordinates $\mathbf{k} \equiv (k, \phi)$ and $\mathbf{r} \equiv (r, \theta)$ the spinors have the explicit form

$$\psi_{k, \phi}^s(r, \theta) = \begin{pmatrix} A_s \\ -i B_s e^{i\phi} \end{pmatrix} e^{i k r \cos(\theta - \phi)}, \quad (4)$$

where $|A_s|^2 + |B_s|^2 = 1$ and

$$\frac{A_s + i B_s}{A_s - i B_s} = s \frac{\lambda k^3 \cos 3\theta + i v_F k}{\sqrt{v_F^2 k^2 + \lambda^2 k^6 \cos^2 3\theta}}. \quad (5)$$

We note that A_s and B_s are periodic functions of θ of period $\frac{2\pi}{3}$. In the rotationally invariant case, i.e., without the warping term ($\lambda = 0$), the eigenstates of the Hamiltonian are rewritten as angular momentum eigenstates, and only the s -wave channel^{29,30} is found to contribute to the Kondo interaction. In the case with warping ($\lambda \neq 0$), there is only a discrete rotational symmetry, and instead of representations of $O(2)$ the eigenstates have to be expressed as representations of the discrete group Z_3 :

$$\psi_{k, \phi, \ell}^s(\mathbf{r}) = \frac{1}{\sqrt{3}} \sum_{n=0,1,2} e^{i \frac{2\pi}{3} \ell n} \psi_{k, \phi + \frac{2n\pi}{3}}^s(\mathbf{r}), \quad (6)$$

with the restriction $|\phi| < \pi/3$ and $\ell = 0, 1, 2$ labels the representation. With full rotational symmetry, ℓ would be the angular momentum. Because of the threefold symmetry of the warping term, the states having a difference of angular momentum equal to a multiple of 3 are hybridized together, and the angular momentum ℓ is defined only modulo 3. In that basis, the spinor (3) reads

$$\Psi(\mathbf{r}) = \sum_{\ell, s=\pm} \int \frac{d^2\mathbf{k}}{(2\pi)^2} \psi_{\mathbf{k}, \ell}^s(\mathbf{r}) c_{\ell, s}(\mathbf{k}). \quad (7)$$

Since $\psi_{k, \phi, 1}^s(0, \theta) = 0$, only the $\ell = 0, 2$ modes interact with the magnetic impurity,

$$\Psi(\mathbf{0}) = \sqrt{3} \int \frac{d^2\mathbf{k}}{(2\pi)^2} \begin{pmatrix} A c_{0,+}(\mathbf{k}) - B c_{0,-}(\mathbf{k}) \\ -i B c_{2,+}(\mathbf{k}) - i A c_{2,-}(\mathbf{k}) \end{pmatrix}, \quad (8)$$

and the Kondo Hamiltonian is rewritten as

$$\begin{aligned} H &= \sum_{\ell, s} \int \frac{d^2\mathbf{k}}{(2\pi)^2} [s E(\mathbf{k}) - \mu] c_{\ell, s}^\dagger(\mathbf{k}) c_{\ell, s}(\mathbf{k}) \\ &\quad + J_K \mathbf{S} \cdot \Psi^\dagger(\mathbf{0}) \boldsymbol{\sigma} \Psi(\mathbf{0}), \end{aligned} \quad (9)$$

with

$$E(\mathbf{k}) \equiv \sqrt{v_F^2 k^2 + \lambda^2 k^6 \cos^2(3\phi)}. \quad (10)$$

The Hamiltonian (9) can be further reduced by turning the integration variable \mathbf{k} to a system of curvilinear coordinates (E, κ_\perp) , where E is the energy of the eigenstate, and κ_\perp is the curvilinear coordinate along the line of constant energy.

Introducing the new operators,

$$a_{\ell,s}(E, \kappa_{\perp}) = \frac{c_{\ell,s}(\mathbf{k})}{\sqrt{|\nabla_{\mathbf{k}} E(\mathbf{k})|}}, \quad (11)$$

with anticommutation relations $\{a_{\ell,s}(E, \kappa_{\perp}), a_{\ell',s'}^{\dagger}(E', \kappa'_{\perp})\} = (2\pi)^2 \delta(E - E') \delta(\kappa_{\perp} - \kappa'_{\perp})$, the free electrons part of the Hamiltonian (9) can be rewritten:

$$H_0 = \sum_{\ell,s} \int \frac{dE d\kappa_{\perp}}{(2\pi)^2} (sE - \mu) a_{\ell,s}^{\dagger}(E, \kappa_{\perp}) a_{\ell,s}(E, \kappa_{\perp}). \quad (12)$$

Introducing the density of states,

$$\rho_0(E) \equiv \int \frac{d\kappa_{\perp}}{4\pi^2 |\nabla_{\mathbf{k}} E(\mathbf{k})|}, \quad (13)$$

and the operators,

$$a_{\uparrow,+}(E) = \sqrt{3} \int d\kappa_{\perp} \frac{A(E, \kappa_{\perp}) a_{0,+}(E, \kappa_{\perp})}{\sqrt{2\pi^2 \rho_0(E) |\nabla_{\mathbf{k}} E(\mathbf{k})|}}, \quad (14)$$

$$a_{\uparrow,-}(E) = \sqrt{3} \int d\kappa_{\perp} \frac{B(E, \kappa_{\perp}) a_{0,-}(E, \kappa_{\perp})}{\sqrt{2\pi^2 \rho_0(E) |\nabla_{\mathbf{k}} E(\mathbf{k})|}}, \quad (15)$$

$$a_{\downarrow,+}(E) = \sqrt{3} \int d\kappa_{\perp} \frac{B(E, \kappa_{\perp}) a_{2,+}(E, \kappa_{\perp})}{\sqrt{2\pi^2 \rho_0(E) |\nabla_{\mathbf{k}} E(\mathbf{k})|}}, \quad (16)$$

$$a_{\downarrow,-}(E) = \sqrt{3} \int d\kappa_{\perp} \frac{A(E, \kappa_{\perp}) a_{2,-}(E, \kappa_{\perp})}{\sqrt{2\pi^2 \rho_0(E) |\nabla_{\mathbf{k}} E(\mathbf{k})|}}, \quad (17)$$

with anticommutators $\{a_{\alpha,s}(E), a_{\alpha',s'}^{\dagger}(E')\} = (2\pi)^2 \delta(E - E') \delta_{s,s'} \delta_{\alpha\alpha'}$, we can define

$$a_{\alpha}(E) = (-i)^{1/2-\alpha} \sum_{s=\pm} \Theta(sE) s^{1/2+\alpha} a_{\alpha,s}(|E|), \quad (18)$$

$$\psi_{\alpha}(0) = \int_{-\infty}^{\infty} \frac{dE \sqrt{\rho_0(|E|)}}{\pi \sqrt{8}} a_{\alpha}(E), \quad (19)$$

where Θ denotes the Heaviside function. In terms of these operators, the Kondo Hamiltonian (9) reads

$$H = J_K \mathbf{S} \cdot \Psi^{\dagger}(\mathbf{0}) \boldsymbol{\sigma} \Psi(\mathbf{0}) + \int_{-\infty}^{+\infty} \frac{dE}{(2\pi)^2} \sum_{\alpha} (E - \mu) a_{\alpha}^{\dagger}(E) a_{\alpha}(E) + \dots, \quad (20)$$

where \dots stands for the modes of the free electrons Hamiltonian H_0 that do not couple to the impurity. Away from the Dirac point, the density of states $\rho_0(E)$ can be approximated by the density of states at the Fermi level $\rho_0(\mu)$, and the usual single channel Kondo problem is obtained. For a spin-1/2 impurity, the Kondo temperature can be obtained from the Bethe ansatz solution as⁶⁵

$$T_K = D e^{\gamma_E - 1/4} \exp\left(\frac{-1}{J_K \rho_0(\mu)}\right), \quad (21)$$

where $\gamma_E \simeq 0.577$ is the Euler-Mascheroni constant and D is a symmetric cutoff around the Fermi energy. The density of states $\rho_0(E)$ can be expressed in terms of elliptic integrals,⁶⁶ so the full dependence of the Kondo temperature on the chemical potential is known up to the prefactor D . Since the Bethe ansatz solution of the Kondo problem⁶⁵ requires a constant density of states, D represents as the energy scale away from the Fermi energy for which the density of states starts to deviate significantly from the density of states at the Fermi energy. For small warping λ or not too far from the Dirac

point, the density of states is a linear function of energy, and $D \simeq \mu$, so the dependence of D on E is only a subdominant contribution. Close to the Dirac point, $\mu \rightarrow 0$, the density of states $\rho_0(\mu) \sim |\mu|$. Because of such pseudogap, the Kondo temperature vanishes.⁶⁷ These results are in agreement with the ones derived in the framework of the Anderson model,^{29,30} where Kondo screening was obtained only when the density of states at the Fermi level was nonvanishing. In the case of an impurity with spin $S > 1/2$, Eq. (20) would give the underscreened single channel Kondo fixed point.

More generally, it can be established in any dimension d that with any free Hamiltonian of the form

$$H_0 = \sum_{\alpha,\beta} c_{k,\alpha}^{\dagger} [\mu \delta_{\alpha\beta} + \boldsymbol{\epsilon}(\mathbf{k}) \cdot \boldsymbol{\sigma}_{\alpha\beta}] c_{k,\beta} \quad (22)$$

having time reversal symmetry [i.e., $\boldsymbol{\epsilon}(-\mathbf{k}) = -\boldsymbol{\epsilon}(\mathbf{k})$] only a conventional Kondo effect can be obtained. Indeed, if we write the partition function as⁶⁸

$$Z = Z_0 \langle T_{\tau} e^{-J_K \int_0^{\beta} d\tau \mathbf{S}(\tau) \cdot \psi_{\alpha}^{\dagger}(0, \tau) \boldsymbol{\sigma}_{\alpha\beta} \psi_{\beta}(0, \tau)} \rangle_{H_0}, \quad (23)$$

with $Z_0 \equiv \text{Tr} e^{-\beta H_0}$, and expand in powers of J_K , the series will depend on

$$G_{\alpha\beta}(0, \tau) = \frac{1}{\beta} \sum_{i\nu_n} \int \frac{d^d \mathbf{k}}{(2\pi)^d} \frac{(i\nu_n + \mu) \delta_{\alpha\beta} + \boldsymbol{\epsilon}(\mathbf{k}) \cdot \boldsymbol{\sigma}_{\alpha\beta}}{(i\nu_n + \mu)^2 - \|\boldsymbol{\epsilon}(\mathbf{k})\|^2} e^{i\nu_n \tau}, \quad (24)$$

but since $\boldsymbol{\epsilon}(\mathbf{k})$ is odd, introducing the density of states $\rho_0(E) = \int \delta(E - \|\boldsymbol{\epsilon}(\mathbf{k})\|) d^d \mathbf{k} / (2\pi)^d$ we can write

$$G_{\alpha\beta}(0, \tau) = \frac{1}{2\beta} \sum_{i\nu_n} \int \frac{\rho_0(|E|) \delta_{\alpha\beta}}{i\nu_n + \mu - E} dE, \quad (25)$$

showing that the partition function is the same as the one of a system without spin-orbit coupling having the same density of states ρ_0 as the Hamiltonian (22). As a result, a conventional Kondo effect is realized every time the density of states at the Fermi level is nonzero.⁶⁸ As a consequence, the dispersion and the Kondo self-energy are expected to remain spin independent much beyond the mean-field approximation that we will consider in the following.

III. FRIEDEL OSCILLATIONS AND ABRIKOSOV FERMIONS MEAN-FIELD THEORY

A. Mean-field theory

1. Abrikosov fermions and mean-field self-consistent relations

We have seen in Sec. II that even in the presence of warping, a magnetic impurity on the surface of a topological insulator is always screened provided the density of states at the Fermi level is nonzero. In such conditions, a Kondo screening cloud^{61,69} is formed around the impurity, and Friedel oscillations are formed. We consider in the following the case of a fully screened $S = 1/2$ impurity. Since we are dealing with a conventional Kondo fixed point, we can use the Abrikosov fermion representation⁶² for the localized spin:

$$S^+ = f_{\uparrow}^{\dagger} f_{\downarrow}, \quad S^- = f_{\downarrow}^{\dagger} f_{\uparrow}, \quad S^z = \frac{1}{2} (f_{\uparrow}^{\dagger} f_{\uparrow} - f_{\downarrow}^{\dagger} f_{\downarrow}), \quad (26)$$

with the constraint

$$1 = f_{\uparrow}^{\dagger} f_{\uparrow} + f_{\downarrow}^{\dagger} f_{\downarrow}, \quad (27)$$

to rewrite the Kondo interaction as a local fermion-fermion interaction:

$$H_K = J_K \mathbf{S} \cdot \Psi^{\dagger}(\mathbf{0}) \sigma \Psi(\mathbf{0}) \\ = \frac{J_K}{2} \left(\sum_{\alpha\beta} f_{\alpha}^{\dagger} f_{\beta} \psi_{\beta}^{\dagger}(0) \psi_{\alpha}(0) - \sum_{\alpha} \frac{\psi_{\alpha}^{\dagger}(0) \psi_{\alpha}(0)}{2} \right), \quad (28)$$

where the two terms on the right-hand side, respectively, correspond to the spin-flip and charge potential scattering processes of conduction electrons on the Kondo impurity. Hereafter we will concentrate on the spin-flip interaction term and we will neglect the charge potential scattering one. Adding a Lagrange multiplier $\mu_f(1 - \sum_{\alpha} f_{\alpha}^{\dagger} f_{\alpha})$ to the full Kondo Hamiltonian $H_0 + H_K$ to enforce the constraint (27), we decouple (28) by a mean-field approximation:

$$H_{MF} = H_0 + \Delta \sum_{\alpha} [f_{\alpha}^{\dagger} \psi_{\alpha}(0) + \text{H.c.}] - \mu_f \sum_{\alpha} f_{\alpha}^{\dagger} f_{\alpha}, \quad (29)$$

where the effective hybridization Δ and the Lagrange multiplier μ_f satisfy the self-consistent relations:

$$\Delta = \frac{J_K}{2} \sum_{\alpha} \langle \psi_{\alpha}^{\dagger} f_{\alpha} \rangle, \quad (30)$$

$$1 = \sum_{\alpha} \langle f_{\alpha}^{\dagger} f_{\alpha} \rangle, \quad (31)$$

where $\langle \dots \rangle$ denotes the thermal average computed with the mean-field effective Hamiltonian (29). We introduce the Fourier decomposition:

$$\psi_{\alpha}(\mathbf{r}) = \frac{1}{L} \sum_{\mathbf{k}} c_{\mathbf{k}\alpha} e^{i\mathbf{k}\cdot\mathbf{r}}, \quad (32)$$

where L^2 is the surface of the system. To solve the mean-field equations, we introduce the Green's functions

$$G_{\alpha\beta}^{cc}(\mathbf{k}, \mathbf{k}', \tau) = -\langle T_{\tau} c_{\mathbf{k}\alpha}(\tau) c_{\mathbf{k}'\beta}^{\dagger}(0) \rangle, \\ G_{\alpha\beta}^{fc}(\mathbf{k}', \tau) = -\langle T_{\tau} f_{\alpha}(\tau) c_{\mathbf{k}'\beta}^{\dagger}(0) \rangle, \\ G_{\alpha\beta}^{cf}(\mathbf{k}, \tau) = -\langle T_{\tau} c_{\mathbf{k}\alpha}(\tau) f_{\beta}^{\dagger}(0) \rangle, \\ G_{\alpha\beta}^{ff}(\tau) = -\langle T_{\tau} f_{\alpha}(\tau) f_{\beta}^{\dagger}(0) \rangle. \quad (33)$$

Using the equations of motion from the Hamiltonian (29) and a Fourier decomposition in Matsubara frequencies, the Green's functions in Eq. (33) are expressed as

$$G^{cc}(\mathbf{k}, \mathbf{k}', i\nu_n) = \delta_{\mathbf{k}, \mathbf{k}'} G_0(\mathbf{k}, i\nu_n) \\ + \frac{|\Delta|^2}{L^2} G_0(\mathbf{k}, i\nu_n) G^{ff}(i\nu_n) G_0(\mathbf{k}', i\nu_n), \quad (34)$$

$$G^{fc}(\mathbf{k}, i\nu_n) = -\frac{\Delta^*}{L} G^{ff}(i\nu_n) G_0(\mathbf{k}, i\nu_n), \quad (35)$$

$$G^{cf}(\mathbf{k}, i\nu_n) = -\frac{\Delta}{L} G_0(\mathbf{k}, i\nu_n) G^{ff}(i\nu_n), \quad (36)$$

$$G^{ff}(i\nu_n) = [i\nu_n + \mu_f - \Sigma(i\nu_n)]^{-1}, \quad (37)$$

with the free electrons Green function,

$$G_0(\mathbf{k}, i\nu_n) \equiv [i\nu_n - \mathcal{H}^0(\mathbf{k})]^{-1}, \quad (38)$$

and the self-energy,

$$\Sigma(i\nu_n) = |\Delta|^2 \int \frac{d^2\mathbf{k}}{(2\pi)^2} G_0(\mathbf{k}, i\nu_n). \quad (39)$$

Hereafter, we introduce the noninteracting electronic density of states, $\rho_0(E) \equiv \int \delta(E - \epsilon_{\mathbf{k}}) d^2\mathbf{k} / (2\pi)^2$, where $\epsilon_{\mathbf{k}}$ denotes the electronic eigenenergies. Remarking that $\mathcal{H}^0(\mathbf{k})$ has time reversal symmetry, and invoking a similar analysis as the one leading to Eq. (25), we find the following spin-independent expression for the self-energy:

$$\Sigma_{\alpha\beta}(z) \equiv \delta_{\alpha\beta} |\Delta|^2 \int_{-\infty}^{\infty} dE \frac{\rho_0(E)}{z + \mu - E}. \quad (40)$$

Introducing the real and imaginary parts of the self-energy, $\Sigma_{\alpha\beta}(E + i0^+) = \delta_{\alpha\beta} [\Sigma'(E) + i\Sigma''(E)]$, with

$$\Sigma'(E) = |\Delta|^2 \int_{-\infty}^{\infty} d\epsilon \rho_0(\epsilon) \text{P.V.} \left(\frac{1}{E + \mu - \epsilon} \right), \quad (41)$$

$$\Sigma''(E) = -\pi |\Delta|^2 \rho_0(E + \mu), \quad (42)$$

the self-consistency conditions (30) and (31) read

$$|\Delta|^2 = J_K \int_{-\infty}^{\infty} \frac{dE}{\pi} n_F(E) \frac{(E + \mu_f) \Sigma''(E)}{[E + \mu_f - \Sigma'(E)]^2 + [\Sigma''(E)]^2}, \quad (43)$$

$$\frac{1}{2} = - \int_{-\infty}^{\infty} \frac{dE}{\pi} n_F(E) \frac{\Sigma''(E)}{[E + \mu_f - \Sigma'(E)]^2 + [\Sigma''(E)]^2}. \quad (44)$$

2. Kondo temperature

On general grounds, the Kondo temperature T_K indicates a crossover between the high temperature weakly coupled and the low temperature strongly coupled regimes. Indeed, the system at temperatures below T_K is characterized by a magnetic confinement of the spin of the edge electronic states which screens the Kondo impurity.³³ T_K has been shown to be the unique energy scale that characterizes the universal physical properties of single impurity Kondo models at low temperature $T \ll T_K$. We will see later how this scaling property will become extremely useful for analyzing universal properties of the electronic density at very low temperature. But before, we derive here an expression of T_K . Within the mean-field approximation, the Kondo crossover turns to a transition at T_K which corresponds to a continuous vanishing of the f - c effective hybridization: $\Delta(T_K) = 0$. Invoking the self-consistent relations (43) and (44), we find (see Appendix A1) the following mean-field equation for T_K :

$$\mu_f = 0, \quad (45)$$

and

$$\frac{2}{J_K} = \text{P.V.} \int_{-\infty}^{+\infty} dE \frac{n_F(E)}{E} \rho_0(\mu + E), \quad (46)$$

which is equivalent to the Nagaoka-Suhl equation derived in Refs. 70 and 71. Assuming an even free electrons density of state, $\rho_0(-E) = \rho_0(E)$, a general explicit expression of T_K was derived in the weak Kondo coupling limit,^{72,73}

$$T_K = F_K e^{-1/J_K \rho_0(\mu)}, \quad (47)$$

with

$$F_K = \frac{2e^{\gamma_E}}{\pi} (D + \mu) \exp \left[- \int_{-D-\mu}^0 \frac{dE}{E} \frac{\rho_0(\mu + E) - \rho_0(\mu)}{\rho_0(\mu)} \right], \quad (48)$$

where $\gamma_E \simeq 0.577$ is the Euler-Mascheroni constant, and D denotes the half-bandwidth of ρ_0 . The mean-field expression (47) provides the usual nonanalytic exponential term characterizing the J_K dependence of the Kondo temperature at small Kondo coupling $J_K \rho_0(\mu) \ll 1$. The same exponential dependence also emerges from the mapping to the Bethe ansatz solvable model [see Eq. (21)]. The prefactor F_K does not depend on J_K and is thus a pure characteristic of the noninteracting electronic system. Whatever the specific chemistry of the magnetic impurity and whatever the microscopic details of its coupling with conduction electrons, the prefactor F_K depends only on the energy structure of the noninteracting conduction electrons.

We find that $F_K \sim D$ if one assumes a constant density of states and a chemical potential close to the middle of the electronic energy band. The situation may become quantitatively different when the conduction electrons describe the surface modes of a topological insulator. Indeed, using the density of states $\rho(E) = |E|/(2\pi v_F^2)$ that characterizes a surface mode without warping, we find for $\mu > 0$

$$T_K = \frac{2e^{\gamma_E-1}}{\pi} \frac{\mu^2}{D + \mu} \exp \left(\frac{D}{\mu} - \frac{2\pi v_F^2}{J_K \mu} \right). \quad (49)$$

This small J_K asymptotic expression becomes singular at the Dirac point $\mu = 0$, where the density of states vanishes linearly. At the Dirac point, one has to start from Eq. (46) for the Kondo temperature, which simplifies to

$$\frac{1}{J_K} = \int_0^D \frac{dE}{2\pi v_F^2} \tanh \left(\frac{E}{2T_K} \right), \quad (50)$$

$$= \frac{T_K}{\pi v_F^2} \ln \left[\cosh \left(\frac{D}{2T_K} \right) \right], \quad (51)$$

where D is a bandwidth cutoff. For $J_K < J_K^c \equiv \frac{2\pi v_F^2}{D}$, Eq. (50) has no solution, in agreement with the results of Ref. 67. For $J_K > J_K^c$, we find that

$$T_K = \frac{D}{2 \ln 2} \left(1 - \frac{J_K^c}{J_K} \right), \quad (52)$$

indicating that the regular Kondo effect can still be realized at the Dirac point, but with a Kondo temperature vanishing linearly with the Kondo interaction when $J_K \rightarrow J_K^c$, in agreement with the prediction of Ref. 67 for a linear density of states.

3. T-matrix and local electronic density

The local electronic density is defined as

$$\rho(\mathbf{r}) \equiv -\frac{1}{\pi} \text{Im}[\text{Tr}[G^{cc}(\mathbf{r}, \mathbf{r}, i0^+)]] \equiv \rho_0(\mu) + \delta\rho(\mathbf{r}). \quad (53)$$

From Eqs. (34) and (37) we derive the expression of the T-matrix,⁶¹ which is defined by the relation

$$G(\mathbf{r}, \mathbf{r}', i\nu_n) \equiv G_0(\mathbf{r} - \mathbf{r}', i\nu_n) + G_0(\mathbf{r}, i\nu_n) T(i\nu_n) G_0(-\mathbf{r}', i\nu_n). \quad (54)$$

We find

$$T(i\nu_n) = |\Delta|^2 G^{ff}(i\nu_n) = |\Delta|^2 [i\nu_n + \mu_f - \Sigma(i\nu_n)]^{-1}. \quad (55)$$

Invoking this expression of the T-matrix and considering that the Kondo self-energy $\Sigma(i\nu_n)$ is diagonal and symmetric in spin components [see Eq. (40)], the local electronic density is then given by

$$\delta\rho(\mathbf{r}) = \frac{|\Delta|^2}{\beta} \sum_{\nu_n} \frac{\text{Tr}[G_0(\mathbf{r}, i\nu_n) G_0(-\mathbf{r}, i\nu_n)]}{i\nu_n + \mu_f - \Sigma(i\nu_n)}. \quad (56)$$

Assuming that the energy scale which characterizes the Kondo resonance is much smaller than the effective bandwidth of the noninteracting electrons, the T-matrix can be approximated as

$$T(i\nu_n) = \frac{|\Delta|^2}{i[\nu_n + \Gamma \text{sgn}(\nu_n)]}, \quad (57)$$

where $\Gamma = \pi |\Delta|^2 \rho_0(\mu)$. This expression of the T-matrix is expected to be valid beyond the mean-field approach that we are following here, since it is equivalent up to a Fourier transformation to the definitions Eqs. (5.38)–(5.39) on p. 112 in Ref. 33.

The expression of Γ in terms of the microscopic parameters of the Hamiltonian can be obtained from Eq. (A12). For zero temperature, we have (see Appendix A for a derivation)

$$\Gamma(T=0) = (D + \mu) \exp \left[-\frac{1}{J_K \rho_0(\mu)} - \int_{-D-\mu}^0 \frac{dE}{E} \frac{\rho_0(\mu + E) - \rho_0(\mu)}{\rho_0(\mu)} \right]. \quad (58)$$

Comparing this expression with expression (47) for the Kondo temperature, we find the very general (i.e., coupling and band-structure independent) relation

$$T_K = \frac{2e^{\gamma_E}}{\pi} \Gamma(T=0), \quad (59)$$

which connects universally the crossover temperature T_K to the $T=0$ resonance width. Invoking the Wilson ratio $R \equiv \chi(T=0)/\gamma = 2$, and using the small coupling asymptotic expression $\gamma \approx -\frac{1}{\pi} \text{Im}[G^{ff}(i0^+)] \approx 1/\pi\Gamma$, we find the following universal Wilson number within the mean-field approximation:

$$w \equiv T_K \chi(T=0) = \frac{2e^{\gamma_E}}{\pi^2} \approx 0,36. \quad (60)$$

This result is in relatively good agreement with Wilson's numerical result $w = 0,41$ [see Eq. (6.75) in Ref. 33]. Therefore, the following results will be derived within the mean-field method, but we expect them to be qualitatively and quantitatively valid beyond this approximation.

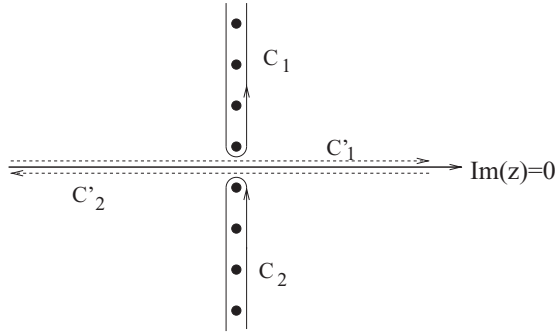


FIG. 1. Integration contours C_1 and C_2 used in the calculation of the sum (53). These contours can be deformed into C'_1 and C'_2 .

B. Friedel oscillations without warping

In this section, we study the electronic local density $\rho(\mathbf{r})$ in the absence of warping, i.e., for $\lambda = 0$. We start from expression (53) and we rewrite the sum as a contour integral:

$$\begin{aligned} \delta\rho(\mathbf{r}) = & - \int_{C_1} \frac{dz}{2i\pi} n_F(z) \text{Tr} \left[G_0(\mathbf{r}, z) \frac{|\Delta|^2}{z + i\Gamma} G_0(-\mathbf{r}, z) \right] \\ & - \int_{C_2} \frac{dz}{2i\pi} n_F(z) \text{Tr} \left[G_0(\mathbf{r}, z) \frac{|\Delta|^2}{z - i\Gamma} G_0(-\mathbf{r}, z) \right], \end{aligned} \quad (61)$$

where the contours C_1 and C_2 , depicted by Fig. 1, encircle the poles of the function $n_F(z) = (e^{\beta z} + 1)^{-1}$ of the positive (negative) imaginary part. The contours can be deformed respectively into C'_1 and C'_2 allowing one to rewrite the integral as

$$\begin{aligned} \delta\rho(\mathbf{r}) = & -|\Delta|^2 \int \frac{dE}{\pi} n_F(E) \\ & \times \text{Im} \left[\frac{\text{Tr}[G_0(\mathbf{r}, E + i0^+) G_0(-\mathbf{r}, E + i0^+)]}{E + i\Gamma} \right], \end{aligned} \quad (62)$$

where E covers the real axis and $G_0(\mathbf{r}, E + i0^+)$ will be obtained in the following from analytic continuation. Indeed, in the absence of warping, an analytic expression of the Green's function is available from the noninteracting Hamiltonian (1). After Fourier transform of $[i\nu_n - \mathcal{H}^0(\mathbf{k})]^{-1}$, we find

$$\begin{aligned} G_0(\mathbf{r}, i\nu_n) = & \frac{i\nu_n + \mu}{2\pi v_F^2} \left[K_0 \left(\frac{|\nu_n| - i\mu \text{sgn}(\nu_n)}{v_F} r \right) \right. \\ & \left. + \text{sgn}(\nu_n) \hat{\mathbf{z}} \cdot (\boldsymbol{\sigma} \times \hat{\mathbf{r}}) K_1 \left(\frac{|\nu_n| - i\mu \text{sgn}(\nu_n)}{v_F} r \right) \right] \end{aligned} \quad (63)$$

and

$$\begin{aligned} & \text{Tr}[G_0(\mathbf{r}, i\nu_n) G_0(-\mathbf{r}, i\nu_n)] \\ & = \frac{(i\nu_n + \mu)^2}{2\pi^2 v_F^4} \left[K_0 \left(\frac{|\nu_n| - i\mu \text{sgn}(\nu_n)}{v_F} r \right)^2 \right. \\ & \quad \left. - K_1 \left(\frac{|\nu_n| - i\mu \text{sgn}(\nu_n)}{v_F} r \right)^2 \right], \end{aligned} \quad (64)$$

where K_0 and K_1 are respectively modified Bessel functions the second kind of order zero and one,⁷⁴ and $r \equiv |\mathbf{r}|$. Hereafter we will replace this expression by its analytic continuation in

the upper half complex plane, $i\nu_n \rightarrow E + i0^+$, with $\nu_n > 0$. Using Eq. (9.6.4) in Ref. 74, we have

$$K_\nu \left(\frac{0^+ - i(E + \mu)}{v_F} r \right) = i \frac{\pi}{2} e^{i\frac{\pi}{2}\nu} H_\nu^{(1)} \left(\frac{(E + \mu + i0^+)}{v_F} r \right), \quad (65)$$

where $H_\nu^{(1)}$ denotes the Hankel function.⁷⁴ We thus find the following expression:

$$\begin{aligned} \delta\rho(\mathbf{r}) = & \frac{|\Delta|^2}{8\pi v_F^4} \int dE (E + \mu)^2 n_F(E) \\ & \times \text{Im} \left[\frac{(H_0^{(1)})^2 \left(\frac{(E + \mu)r}{v_F} \right) + (H_1^{(1)})^2 \left(\frac{(E + \mu)r}{v_F} \right)}{E + i\Gamma} \right]. \end{aligned} \quad (66)$$

For long distances, $r \gg R_F = v_F/\mu$, we can use the approximation from Ref. 74:

$$(H_0^{(1)})^2(z) + (H_1^{(1)})^2(z) = \frac{-2}{\pi z^2} e^{i(2z - \frac{\pi}{2})} + O(1/z^3), \quad (67)$$

giving

$$\begin{aligned} \delta\rho(\mathbf{r}) \simeq & \frac{\Gamma}{2\pi^2 \mu r^2} \int_{-\infty}^{\infty} \frac{d\zeta}{1 + \exp\left(\frac{E}{T}\right)} \\ & \times \text{Re} \left[\frac{\exp[2i(E + \mu)r/v_F]}{E + i\Gamma} \right], \end{aligned} \quad (68)$$

where we have used the relation $|\Delta|^2 = \Gamma/\pi\rho_0(\mu) = 2\Gamma v_F^2/\mu$.

At zero temperature, with Eq. (68) we find the following expression for the local density:

$$\delta\rho(\mathbf{r}) = -\frac{\Gamma}{2\pi^2 \mu r^2} e^{\frac{2\Gamma r}{v_F}} E_1 \left(\frac{2\Gamma r}{v_F} \right) \cos \left(\frac{2\mu r}{v_F} \right), \quad (69)$$

where $E_1(u)$ is the exponential integral.⁷⁴ For long distance $r \gg v_F/\Gamma$, since $e^u E_1(u) \sim 1/u$, we obtain

$$\delta\rho(\mathbf{r}) \sim -\frac{v_F}{4\pi^2 \mu r^3} \cos \left(\frac{2\mu r}{v_F} \right). \quad (70)$$

Remarkably, the amplitude of the Friedel oscillations becomes independent of Γ , i.e., independent of T_K , for distances longer than the Kondo length scale $R_K \equiv v_F/\Gamma$. This can be understood by noting that for distances larger than R_K , the impurity appears as a potential scatterer at unitarity.²³ For short distances $r \ll v_F/(2\mu)$, R_K , we find

$$\delta\rho(\mathbf{r}) = \frac{\Gamma}{2\pi^2 \mu r^2} \ln \left(\frac{2\Gamma e^\gamma r}{v_F} \right), \quad (71)$$

so that the amplitude of oscillations inside the Kondo cloud depends explicitly on Γ . This indicates that the Friedel oscillations at distances shorter than the Kondo length scale R_K reflect the internal structure of the Kondo screening cloud.⁶¹

At finite temperature, Eq. (68) yields

$$\begin{aligned} \delta\rho(\mathbf{r}) = & -\frac{\Gamma}{2\pi^2 \mu r^2} \frac{e^{-\frac{2\Gamma r}{\beta v_F}}}{\frac{1}{2} + \frac{\beta\Gamma}{2\pi}} {}_2F_1 \left(1, \frac{1}{2} + \frac{\beta\Gamma}{2\pi}; \frac{3}{2} + \frac{\beta\Gamma}{2\pi}; e^{-\frac{4\Gamma r}{\beta v_F}} \right) \\ & \times \cos \left(\frac{2\mu r}{v_F} \right), \end{aligned} \quad (72)$$

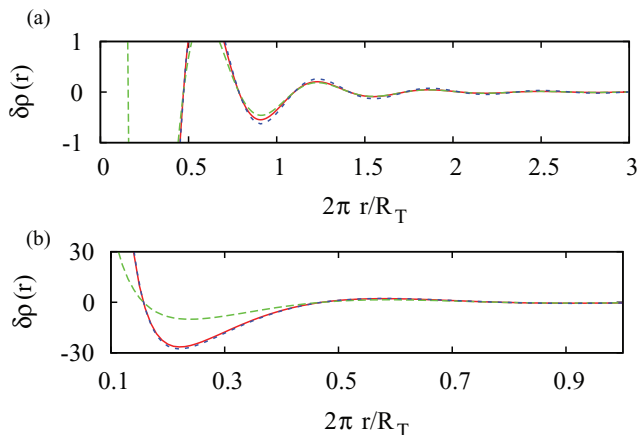


FIG. 2. (Color online) Variation of electronic density computed at finite temperature using the exact expression Eq. (72) (red solid line), the long distance coherent approximation Eq. (70) (blue dotted line) which is appropriate for $R_K < r < R_T$, and the very long distance regime $r > R_T$ approximated by Eq. (73) (green dashed line). (a) Overview along few Friedel oscillations; (b) focus at relatively short distance. Here, we chose $R_T = 50R_K$ and $\pi R_F = 5R_K$.

where ${}_2F_1$ is the Gauss hypergeometric function.⁷⁴ For long distances, and $T \ll T_K$ the Friedel oscillations decay exponentially over the thermal length $R_T \equiv v_F/T$,

$$\delta\rho(\mathbf{r}) \sim -\frac{e^{-\frac{2\pi r}{\beta v_F}}}{\pi\beta\mu r^2} \cos\left(\frac{2\mu r}{v_F}\right), \quad (73)$$

in agreement with Ref. 30. The behavior is represented on Fig. 2 which depicts the Friedel oscillations, and on Fig. 3 which depicts the envelope of these oscillations. It appears clearly that the Friedel oscillations have a period πR_F , and an envelope decreasing like $1/r^3$ when $R_K < r < R_T$ as approximated by Eq. (70). Their amplitude is exponentially reduced at longer distances $r > R_T$, where Eq. (73) provides a good approximation. We see from the previous analysis that there are three relevant length scales as depicted schematically

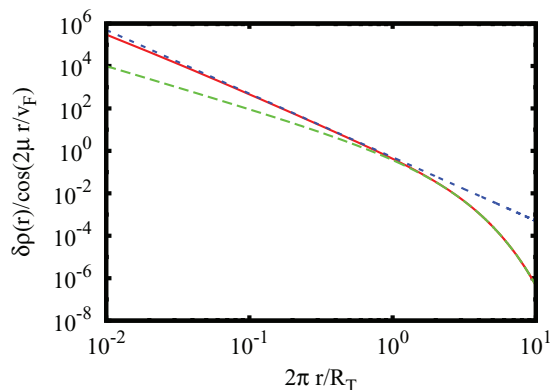


FIG. 3. (Color online) Plot of the envelope of Friedel oscillations, $\delta\rho(\mathbf{r})/\cos(2\mu r/v_F)$, computed at finite temperature using the exact expression Eq. (72) (red solid line), the long distance coherent approximation Eq. (70) (blue dotted line) which is appropriate for $R_K < r < R_T$, and the very long distance regime $r > R_T$ approximated by Eq. (73) (green dashed line). Here, we chose $R_T = 50R_K$ and $\pi R_F = 5R_K$.

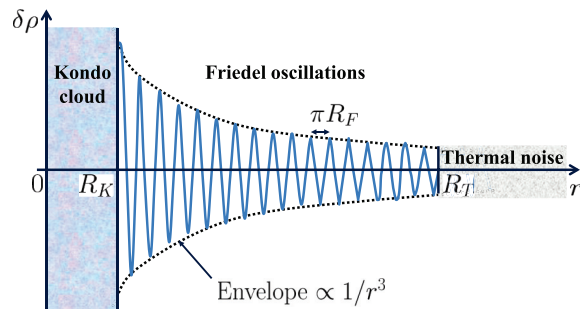


FIG. 4. (Color online) Schematic description of the Friedel oscillations that can be observed in the density variations around the impurity when $T < T_K$. For the rotationally invariant case $\lambda = 0$ the envelope decays like $1/r^3$. For the warping term $\lambda \neq 0$ the decay is slower (like $1/r^2$) in some directions.

by Fig. 4. The first one, $R_F = v_F/\mu$, is proportional to the Fermi wavelength. For length scales much larger than R_F , the simplification (67) is justified, and R_F then simply gives the pseudoperiod of the Friedel oscillations. The second length scale is the Kondo screening length R_K , which is the size of the Kondo cloud; due to the temperature dependence of the Kondo resonance width, $\Gamma(T)$, we have $R_K(T \gtrsim T_K) = \infty$ and $R_K(T \ll T_K) \propto v_F/T_K$. Above that length scale, which requires at least $T < T_K$, the Friedel oscillations become identical to those of a resonant nonmagnetic impurity. The third important length scale is the thermal length R_T . Beyond that length, the Friedel oscillations decay exponentially, while below R_T they are unchanged from the zero temperature case. In order to observe the Friedel oscillations characteristic of the Kondo screening cloud, we must have $T \ll T_K$ so that the Kondo screening length is much shorter than the thermal length. In a renormalization group picture, the temperature is the natural infrared cutoff for the renormalization group flow, and the constraint $T \ll T_K$ is simply a requirement that the strong coupling scale is reached before the thermal cutoff.

C. Friedel oscillations with warping

We now turn to the electronic local density $\rho(\mathbf{r})$ in the presence of warping. For $\lambda \neq 0$ we don't have anymore an expression in closed form of the Green's function. Instead, we use the approximation (B13) derived in Appendix B:

$$\begin{aligned} G_0(\mathbf{r}, i\nu_n) &= G_0(r, \theta, i\nu_n) \\ &= \frac{i\nu_n + \mu}{2\pi v_F^2} \left[K_0(\zeta_n) + \text{sgn}(\nu_n) \hat{\mathbf{z}} \cdot (\boldsymbol{\sigma} \times \hat{\mathbf{r}}) K_1(\zeta_n) \right. \\ &\quad \left. + \lambda \sigma^z \cos(3\theta) (i\nu_n + \mu)^2 \text{sgn}(\nu_n) K_3(\zeta_n)/v_F^3 \right] \\ &\quad + O(\lambda^2), \end{aligned} \quad (74)$$

with

$$\zeta_n \equiv \frac{|\nu_n| - i\mu \text{sgn}(\nu_n)}{v_F} r. \quad (76)$$

We obtain

$$\begin{aligned} \text{Tr}[G(r, \theta, i v_n) G(r, \theta + \pi, i v_n)] = & \frac{(i v_n + \mu)^2}{2\pi^2 v_F^4} \left[K_0 \left(\frac{|v_n| - i\mu \text{sgn}(v_n)}{v_F} r \right)^2 - K_1 \left(\frac{|v_n| - i\mu \text{sgn}(v_n)}{v_F} r \right)^2 \right. \\ & \left. - \left(\frac{\lambda}{v_F} \cos 3\theta \right)^2 \left(\frac{i v_n + \mu}{v_F} \right)^4 K_3 \left(\frac{|v_n| - i\mu \text{sgn}(v_n)}{v_F} r \right)^2 \right]. \end{aligned} \quad (77)$$

Since this expression is only approximate, we cannot use contour integration techniques to obtain the sum (53). Indeed, attempting to use contour integration for $T > 0$ yields a divergent integral. Nevertheless, for zero temperature, we can still change the sum (53) into an integral as the exponential decay of the modified Bessel function ensures the convergence of the sums. This leads to the zero temperature result valid for $r \gg R_K = v_F/\Gamma$:

$$\delta\rho(\mathbf{r}) = \delta\rho(\mathbf{r})|_{\lambda=0} - \lambda^2 \frac{\mu^4 \cos^2(3\theta)}{4\pi^2 v_F^6 r^2} \cos\left(2\frac{\mu r}{v_F}\right). \quad (78)$$

For positive temperature, we have to compute the sum (53) numerically. This will be done in the next section using realistic values for the model parameters. Here we rather discuss general new features that emerge from this warping term. First, we expect finite temperature corrections to be relevant only in the crossover temperature regime around T_K . Indeed, similar to what we found without warping, the thermal length $R_T = v_F/T$ provides a cutoff below which Friedel oscillations are identical to the ones predicted for $T = 0$, and above which they are muffled by thermal fluctuations.

Furthermore, one important feature here in this expression is the $1/r^2$ decay of the envelope: this decay is identical to the one of a two-dimensional normal metal, and it dominates the $1/r^3$ contribution from the nonwarping. Because of the $\cos^2 3\theta$ factor, the Friedel oscillations in the directions $\theta = \frac{\pi}{6}(2n+1)$ have the contribution from warping switched off and contain only the $1/r^3$ contribution, whilst in other directions the warping contribution is observable and dominates on the longer length scales due to its slower $1/r^2$ decay.

Also, $R_K = v_F/\Gamma$ characterizing the size of the Kondo screening cloud, we expect the Friedel oscillations to be observable only at a distance larger than this Kondo length. Within a renormalization group picture, the density oscillations are thus supposed to be measured at a sufficiently large distance from the Kondo impurity such that the system is correctly described by its strong coupling fixed point, i.e., the Kondo spin is totally screened. Nevertheless, comparing Eqs. (70) and (78) we find that the warping correction becomes relevant only for distances larger than a new characteristic length, $R_W = \frac{v_F^7}{\lambda^2 \mu^5}$. Introducing the density of surface states n_S and invoking the density of states $\rho_0(E) = |E|/(2\pi v_F^2)$ in the vicinity of the Dirac point, we have $n_S = \mu^2/(4\pi v_F^2) = 1/(4\pi R_F^2)$, so that $R_W = (v_F/\lambda)^2 (4\pi n_S)^{-5/2}$. A crossover density emerges, $n_S^* \equiv \frac{1}{4\pi} \left(\frac{v_F^7}{\lambda^2 R_K}\right)^{2/5}$, that distinguishes two different cases: for $n_S > n_S^*$, we find $R_W < R_K$ and the Friedel oscillations which are observed for $R_K < r < R_T$ are characterized by the warping term with switch on and off directions and an $1/r^3$ envelope. But, closer to the Dirac point, i.e., for

density $n_S < n_S^*$, Friedel oscillations are characterized by two regimes: at shortest distances $R_K < r < R_W$ the isotropic term with $1/r^2$ envelope dominates, whilst the warping correction dominates at larger distances $R_W < r < R_T$. Also, a new temperature scale emerges in the lowest density case $n_S < n_S^*$: the warping temperature $T_W \equiv v_F/R_W < T_K$ indicating the crossover temperature below which warping effects appear.

IV. DISCUSSION

Here we analyze the experimental observability of the density oscillation effects, with or without warping effects, that were discussed on general grounds in the previous section. The idea is to compute the density variation $\delta\rho(\mathbf{r})$ around a Kondo impurity using realistic values of parameters that correspond to topologically insulating compounds for which surface states have been observed or predicted. We consider more specifically two compounds: Bi_2Se_3 for which Ref. 63 gives $v_F = 3.55 \text{ eV \AA}$ and $\lambda = 128 \text{ eV \AA}^3$, and Bi_2Te_3 with values $v_F = 2.55 \text{ eV \AA}$ and $\lambda = 250 \text{ eV \AA}^3$ given by Refs. 11 and 64. We are still left with two tunable parameters: the Kondo temperature $T_K = v_F/R_K$, and the density of surface states $n_S = \mu^2/(4\pi v_F^2) = 1/(4\pi R_F^2)$. First, we remark that the Kondo temperature depends on various microscopic parameters including the chemistry of the magnetic impurity and the density n_S . Furthermore, the well-known exponential J_K dependence of T_K (see Sec. III A2) makes this temperature scale very sensitive to variations of these microscopic parameters. Therefore, refereeing from the orders of magnitude that are usually measured in Kondo compounds, we consider here three different characteristic values: $T_K = 1000 \text{ K}$ (big), $T_K = 100 \text{ K}$ (medium), and $T_K = 10 \text{ K}$ (relatively small). For the density of surface states n_S , we consider three values for each compound: the crossover density $n_S^* = \frac{1}{4\pi} \left(\frac{v_F^7}{\lambda^2 R_K}\right)^{2/5}$, a smaller density $n_S = n_S^*/10$, and a larger density $n_S = 10n_S^*$. The sets of relevant parameters that we consider are summarized in Table I for Bi_2Se_3 , and in Table II for Bi_2Te_3 .

The results are represented on Figs. 5 and 6 for Bi_2Se_3 and Bi_2Te_3 , respectively. For these plots, we fixed arbitrarily $T_K = 100 \text{ K}$ and we chose realistic relevant values of chemical potential μ , that can be controlled experimentally by doping with Sn¹¹ or Mg.⁶³ In Bi_2Se_3 compounds, experimental values of μ indicated in Ref. 63 are tuned from 350 meV down to 0 eV. Therefore, the four values that we considered for the plots of Fig. 5 were chosen invoking Table I in order to illustrate the observability of the various cases: with dominant warping term ($\mu = 350 \text{ meV} > \mu^*$), with similar warping and isotropic terms ($\mu = \mu^* = 250 \text{ meV}$), and with negligible warping term

TABLE I. Model parameters for Bi_2Se_3 , with $v_F = 3.55 \text{ eV \AA}$ and $\lambda = 128 \text{ eV \AA}^3$.

	$T_K = 10 \text{ K}$ $R_K = 410 \text{ nm}$	$T_K = 100 \text{ K}$ $R_K = 41 \text{ nm}$	$T_K = 1000 \text{ K}$ $R_K = 4,1 \text{ nm}$
$n_S \approx n_S^*/10$	$n_S = 1,6 \times 10^3 \mu\text{m}^{-2}$ $\mu = 50 \text{ meV}$ $R_F = 7,0 \text{ nm}$ $R_W = 130 \mu\text{m}$ $T_W = 3 \times 10^{-5} \text{ K}$	$n_S = 4 \times 10^3 \mu\text{m}^{-2}$ $\mu = 80 \text{ meV}$ $R_F = 4,4 \text{ nm}$ $R_W = 13 \mu\text{m}$ $T_W = 3 \times 10^{-4} \text{ K}$	$n_S = 10^4 \mu\text{m}^{-2}$ $\mu = 130 \text{ meV}$ $R_F = 2,8 \text{ nm}$ $R_W = 1,3 \mu\text{m}$ $T_W = 3 \times 10^{-3} \text{ K}$
$n_S \approx n_S^*$	$n_S = 1,6 \times 10^4 \mu\text{m}^{-2}$ $\mu = 160 \text{ meV}$ $R_F = 2,2 \text{ nm}$ $R_W = 410 \text{ nm}$	$n_S = 4 \times 10^4 \mu\text{m}^{-2}$ $\mu = 250 \text{ meV}$ $R_F = 1,4 \text{ nm}$ $R_W = 41 \text{ nm}$	$n_S = 10^5 \mu\text{m}^{-2}$ $\mu = 400 \text{ meV}$ $R_F = 8,8 \text{ \AA}$ $R_W = 4,1 \text{ nm}$
$n_S \approx 10n_S^*$	$n_S = 1,6 \times 10^5 \mu\text{m}^{-2}$ $\mu = 500 \text{ meV}$ $R_F = 7,0 \text{ \AA}$ $R_W = 1,3 \text{ nm}$	$n_S = 4 \times 10^5 \mu\text{m}^{-2}$ $\mu = 800 \text{ meV}$ $R_F = 4,4 \text{ \AA}$ $R_W = 1,3 \text{ \AA}$	$n_S = 10^6 \mu\text{m}^{-2}$ $\mu = 1,3 \text{ eV}$ $R_F = 2,8 \text{ \AA}$ $R_W = 0,13 \text{ \AA}$

($\mu = 130 \text{ meV}$ and 50 meV). Figure 5 clearly shows the Friedel oscillations with sixfold rotation symmetry when $\mu > \mu^*$, or with full rotation symmetry when $\mu < \mu^*$. The choice of $T_K = 100 \text{ K}$ for this plot is arbitrary and experimental values of the Kondo temperature can be significantly different. Furthermore, we are aware that doping, i.e., varying μ , strongly affects the value of T_K which may continuously vanish at the Dirac point as we discussed in Sec. III A2. Nevertheless, we expect that the Friedel oscillations will qualitatively not really depend on T_K . This is a consequence of the universality of the strong Kondo coupling effective regime that is realized below T_K within the renormalization group picture: since Friedel oscillations appear above the Kondo screening size R_K their shape is qualitatively universal (but still depends on the warping length R_W and Fermi pseudoperiod πR_F). Also, according to the values given in Table I, the crossover value for the chemical potential varies very smoothly from $\mu^* = 160 \text{ meV}$ to $\mu^* = 400 \text{ meV}$ when T_K changes from 10 K to 1000 K . This suggests that the results which are illustrated by Fig. 5 for $T_K = 100 \text{ K}$ can be extended to any other values

of T_K . Of course, the characteristic unit length which is used for the plots, R_K , would have to be rescaled accordingly. Experimentally, one of the main difficulties for observing Friedel oscillations with or without sixfold symmetry is the requirement of cooling the temperature sufficiently lower than T_K , but the orders of magnitudes that are considered here correspond to values that are realistic both physically (T_K is imposed by the chemistry) and technologically (T is limited by cryogenic techniques).

We made a similar analysis for Bi_2Te_3 compounds. In this case, Ref. 11 indicates experimental values of μ between 350 meV and 120 meV . We thus plotted these two extreme cases, together with the intermediate value $\mu = 250 \text{ meV}$. Here, we chose a Kondo temperature $T_K = 100 \text{ K}$, which corresponds to a crossover value $\mu^* = 130 \text{ meV}$ as indicated in Table II. In this case, the sixfold symmetry resulting from the warping is thus observable for $\mu = 350 \text{ meV}$ and 250 meV , and the full rotation symmetry is recovered for $\mu = 120 \text{ meV}$. The sixfold symmetry may remain for that value of chemical potential if the Kondo temperature is lowered. Indeed,

TABLE II. Model parameters for Bi_2Te_3 , with $v_F = 2.55 \text{ eV \AA}$ and $\lambda = 250 \text{ eV \AA}^3$.

	$T_K = 10 \text{ K}$ $R_K = 300 \text{ nm}$	$T_K = 100 \text{ K}$ $R_K = 30 \text{ nm}$	$T_K = 1000 \text{ K}$ $R_K = 3 \text{ nm}$
$n_S \approx n_S^*/10$	$n_S = 8,3 \times 10^2 \mu\text{m}^{-2}$ $\mu = 26 \text{ meV}$ $R_F = 9,8 \text{ nm}$ $R_W = 94 \mu\text{m}$ $T_W = 3 \times 10^{-5} \text{ K}$	$n_S = 2,1 \times 10^3 \mu\text{m}^{-2}$ $\mu = 41 \text{ meV}$ $R_F = 6,2 \text{ nm}$ $R_W = 9,4 \mu\text{m}$ $T_W = 3 \times 10^{-4} \text{ K}$	$n_S = 5,2 \times 10^3 \mu\text{m}^{-2}$ $\mu = 65 \text{ meV}$ $R_F = 3,9 \text{ nm}$ $R_W = 940 \text{ nm}$ $T_W = 3 \times 10^{-3} \text{ K}$
$n_S \approx n_S^*$	$n_S = 8,3 \times 10^3 \mu\text{m}^{-2}$ $\mu = 82 \text{ meV}$ $R_F = 3,1 \text{ nm}$ $R_W = 300 \text{ nm}$	$n_S = 2,1 \times 10^4 \mu\text{m}^{-2}$ $\mu = 130 \text{ meV}$ $R_F = 2,0 \text{ nm}$ $R_W = 30 \text{ nm}$	$n_S = 5,2 \times 10^4 \mu\text{m}^{-2}$ $\mu = 210 \text{ meV}$ $R_F = 1,2 \text{ nm}$ $R_W = 3 \text{ nm}$
$n_S \approx 10n_S^*$	$n_S = 8,3 \times 10^4 \mu\text{m}^{-2}$ $\mu = 260 \text{ meV}$ $R_F = 9,8 \text{ \AA}$ $R_W = 9,3 \text{ \AA}$	$n_S = 2,1 \times 10^5 \mu\text{m}^{-2}$ $\mu = 410 \text{ meV}$ $R_F = 6,2 \text{ \AA}$ $R_W = 0,93 \text{ \AA}$	$n_S = 5,2 \times 10^5 \mu\text{m}^{-2}$ $\mu = 650 \text{ meV}$ $R_F = 3,9 \text{ \AA}$ $R_W = 0,093 \text{ \AA}$

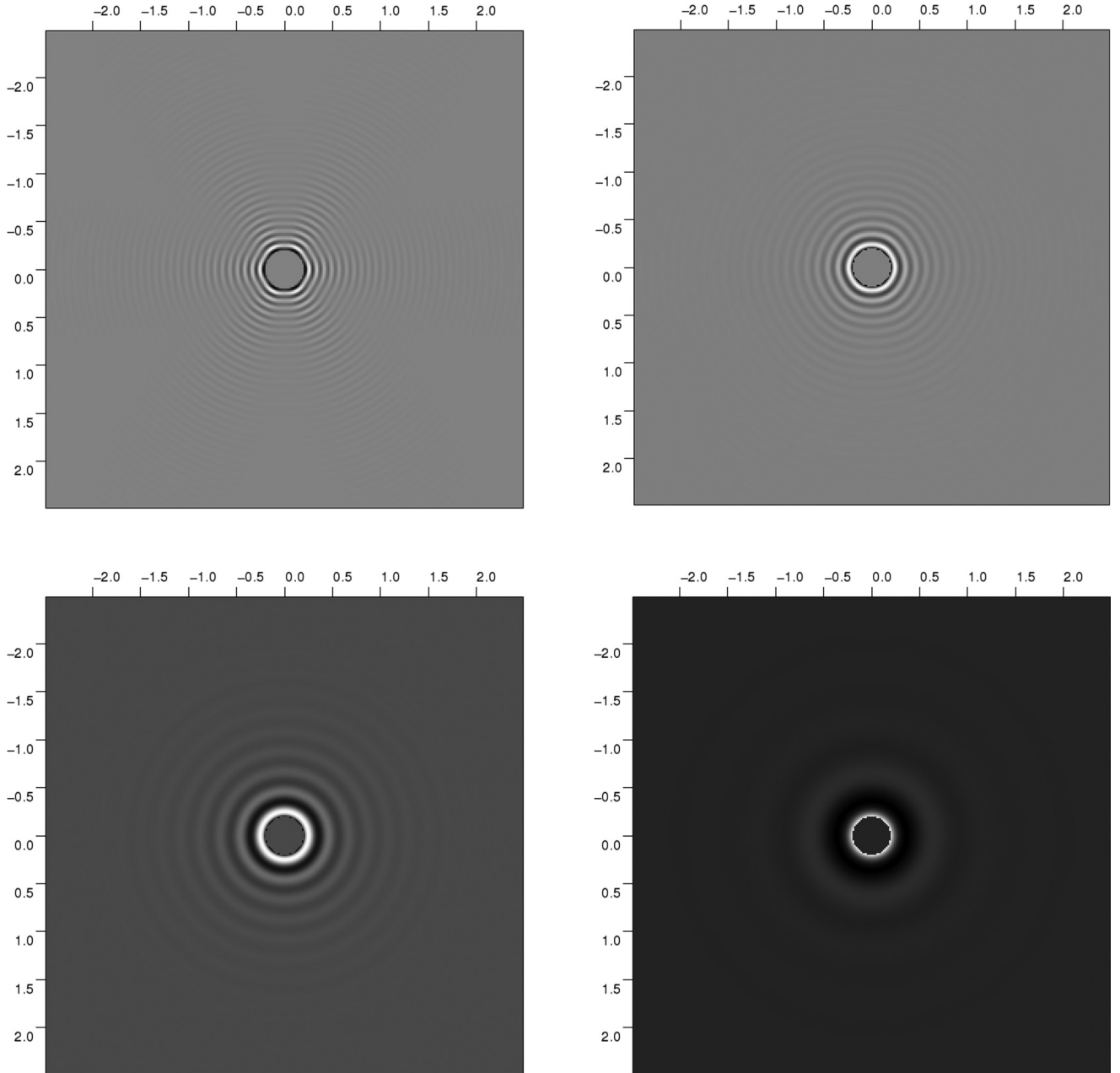


FIG. 5. Intensity plot of the Friedel oscillations around a screened magnetic impurity at the edge of Bi_2Se_3 . Model parameters $v_F = 3.55 \text{ eV \AA}$ and $\lambda = 128 \text{ eV \AA}^3$. We chose $T_K = 100 \text{ K}$ and $T = 10 \text{ K}$. From top left to bottom right, $\mu = 350 \text{ meV}$, 250 meV , 130 meV , and 50 meV . Unit length: R_K . Short distances, $r < 0.2R_K$, are not represented. Intensity in arbitrary units is represented by the darkness of the plots.

Table II indicates $\mu^* = 82 \text{ meV}$ for Bi_2Te_3 compounds with $T_K = 10 \text{ K}$.

Here, we have restricted our analysis to the observation of Friedel oscillations within the fluctuation of the local density of states, $\delta\rho(\mathbf{r})$. This physical quantity can be measured experimentally using scanning tunneling microscopy (STM). Local density of states³¹ (LDOS) measurements have already been performed by STM on Kondo impurities at the surface of metals.^{48–52} The measurement of the Friedel oscillations would require the integration of the measured local density of states over a range of energy.⁶¹ Besides the issue of cooling the temperature sufficiently lower than T_K , other technical limitations have to be considered in order

to observe the predicted Friedel oscillations using STM as follows.

First, a voltage bias is applied locally between the tip of the STM and the surface of the sample. The resulting STM current which is measured may invoke out of equilibrium effects that have not been analyzed here. We expect our predictions to be valid for STM experiments with bias voltages invoking energies that are lower to both T_K and μ . Higher values of bias voltage may have nonuniversal effects on the Kondo screening leading to a distortion of the Friedel oscillations.

A second limitation is the STM resolution in both lateral and depth directions. More precisely, we may expect an experimental STM measurement of the Friedel oscillations to

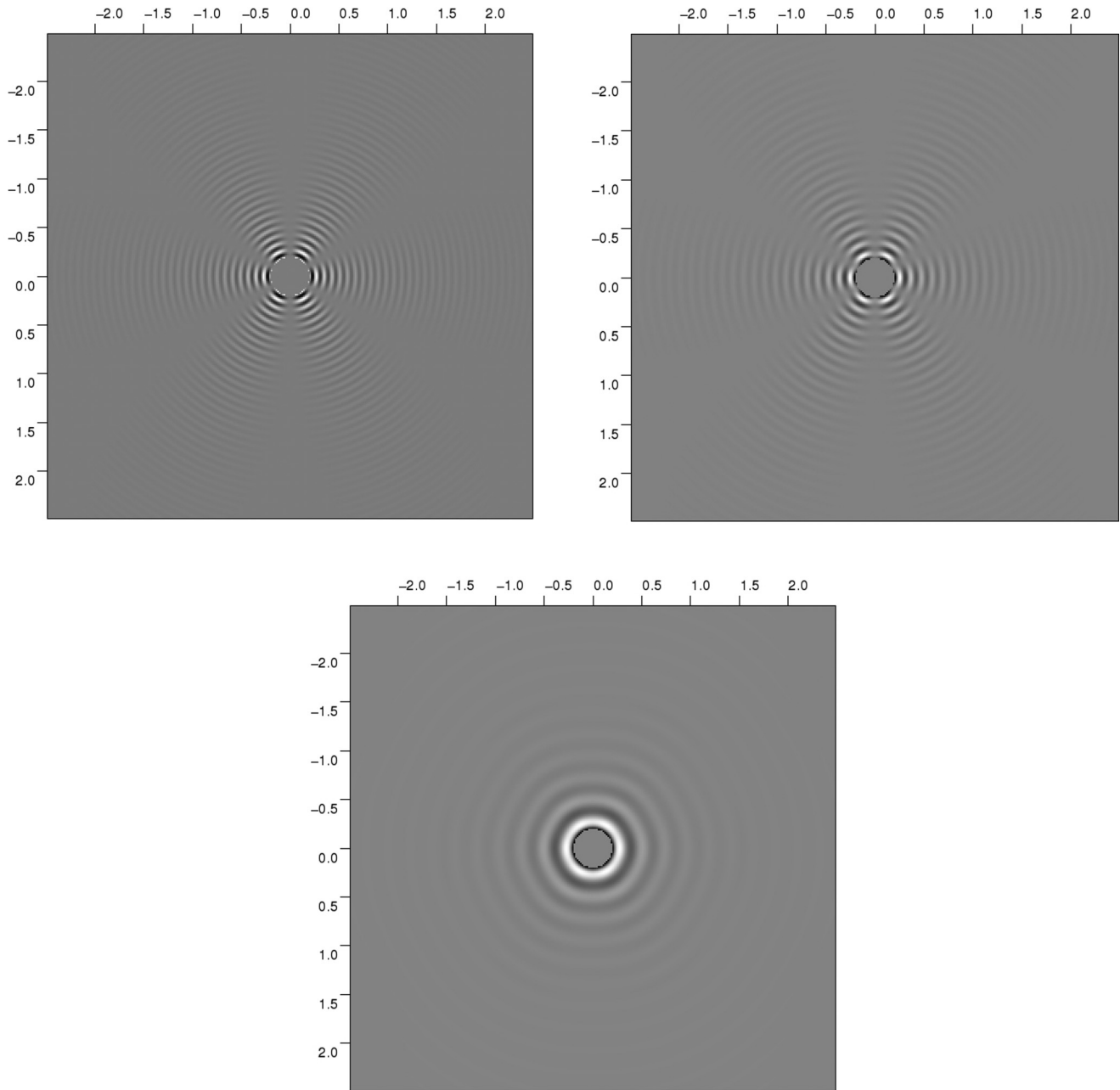


FIG. 6. Intensity plot of the Friedel oscillations around a screened magnetic impurity at the edge of Bi_2Te_3 . Model parameters $v_F = 2.55 \text{ eV \AA}$ and $\lambda = 250 \text{ eV \AA}^3$. We chose $T_K = 100 \text{ K}$ and $T = 10 \text{ K}$. From left to right, $\mu = 340 \text{ meV}$, 250 meV , and 120 meV . Unit length: R_K . Short distances, $r < 0.2R_K$, are not represented. Intensity in arbitrary units is represented by the darkness of the plots.

be realized by moving the STM tip at the surface of the system along two orthogonal directions. The most natural resulting STM signal will thus be discretized on a grid having a square lattice symmetry and an elementary step of length $R_{\text{STM}} \simeq 0.2 \text{ nm}$. Since the period of the Friedel oscillations is πR_F , the measured STM signal may exhibit a Moiré pattern⁷⁵ resulting from the interference between the two periods, R_{STM} and πR_F . Considering the values of R_F which are given in Tables I and II, and assuming R_{STM} is of the order of one or few \AA , Moiré patterns might occur for values of chemical potential relatively higher than μ^* . In such cases, the measured STM images would only have the twofold symmetry common to both the square and the hexagonal symmetry groups.

Comparing qualitatively the plots of Figs. 5 and 6, we find that warping effects and their related sixfold symmetry are more observable at the surface of Bi_2Te_3 rather than Bi_2Se_3 . This is due of course to a larger value of the warping constant λ , but this also results from a smaller value of the Fermi velocity v_F , which gives a smaller value of crossover potential μ^* .

V. CONCLUSION

We have shown that a magnetic impurity on the surface of a strong topological insulator will be fully screened by the surface modes unless the Fermi energy is exactly at the Dirac point. The result depends only on the time reversal

invariance of the effective Hamiltonian of the surface modes and is valid in particular in the presence of warping of the Fermi surface. We have shown that Friedel oscillations are formed around the impurity and we have calculated the shape of these oscillations both without warping and with a weak warping that can be treated perturbatively. With warping, the symmetry of the Friedel oscillation pattern is broken from full rotational symmetry to a sixfold symmetry. In both cases, the pseudoperiod of the oscillations, $\pi R_F = \pi v_F/\mu$, is half the Fermi wavelength of the surface modes, the short distance cutoff $R_K \propto v_F/T_K$ is determined by the Kondo temperature T_K , and the long distance cutoff $R_T = v_F/T$ results from thermal fluctuations. With warping, the amplitude of the fully rotationally symmetric part decreases as $1/r^3$, whilst the sixfold symmetry term has an envelope decreasing more slowly, a $1/r^2$. As a consequence, a new length scale R_W emerges, above which Friedel oscillations with sixfold symmetry may be observed. The crossover condition $R_K \approx R_W$ defines a chemical potential μ^* associated to a doping n_S^* above which the Friedel oscillations are characterized by the sixfold symmetry even at shortest distances. Considering realistic values for the model parameters, we analyzed the observability and the symmetry of Friedel oscillations in the vicinity of magnetic impurities deposited at the surface of two compounds, Bi_2Se_3 and Bi_2Te_3 . We identified a large range of parameters where the crossover between the sixfold and the fully rotational symmetries may be observed. We propose to use STM as an experimental probe for the variation of the local density of states.

Various questions remain to be addressed. First, it would be interesting to investigate the unstable fixed point that separates the regime with Kondo screening from the regime of decoupled impurities in the case of a system at half-filling. Second, an exact calculation of the Friedel oscillations could be performed using form factor expansion methods^{76,77} at zero temperature.

The single impurity model that we considered here could also be generalized to two or several impurities.^{78,79} In this case, the local Kondo screening will compete with the Ruderman-Kittel-Kasuya-Yosida^{80–82} (RKKY) interimpurity screening as discussed by Doniach⁸³ in a general context. Here, we may expect the sixfold symmetry of the Friedel oscillations to have signatures on the symmetry of the RKKY interaction.

ACKNOWLEDGMENTS

We thank J. Cayssol, D. Carpentier, P. Coleman, N. Andrei, N. Perkins, and P. Simon for discussions. The present work was supported by Agence Nationale de la Recherche under Grant No. ANR 2010-BLANC-041902 (ISOTOP).

APPENDIX A: DETAILS OF THE MEAN-FIELD APPROXIMATION

We start from the mean-field self-consistent relations (43):

$$|\Delta|^2 = J_K \int_{-\infty}^{\infty} \frac{dE}{\pi} \frac{(E + \mu_f)n_F(E)\Sigma''(E)}{[E + \mu_f - \Sigma'(E)]^2 + [\Sigma''(E)]^2}, \quad (\text{A1})$$

$$\frac{1}{2} = - \int_{-\infty}^{\infty} \frac{dE}{\pi} \frac{n_F(E)\Sigma''(E)}{[E + \mu_f - \Sigma'(E)]^2 + [\Sigma''(E)]^2}, \quad (\text{A2})$$

with the expression (42) of the imaginary part of the self-energy:

$$\Sigma''(E) = -\pi|\Delta|^2\rho_0(\mu + E). \quad (\text{A3})$$

Introducing the Hilbert transform of the density of states,

$$\Phi(E) \equiv \int_{-\infty}^{\infty} d\epsilon \rho_0(\epsilon) \text{P.V.} \left(\frac{1}{E - \epsilon} \right), \quad (\text{A4})$$

the expression (41) of the real part of the self-energy can be written as

$$\Sigma'(E) = \pi|\Delta|^2\Phi(\mu + E). \quad (\text{A5})$$

1. Derivation of the Kondo temperature

When the temperature T goes to T_K , the hybridization parameter Δ vanishes. In such limit, Eq. (A2) reduces to $n_F(-\mu_f) = 1/2$, yielding $\mu_f(T_K) = 0$. Equation (A1) can then be cast into the Nagaoka-Suhl form:^{70,71}

$$-\frac{1}{J_K} = \text{P.V.} \int_{-\infty}^{+\infty} \frac{dE}{E} n_F(E)\rho_0(\mu + E). \quad (\text{A6})$$

In the general $\mu > 0$ case, we can rewrite Eq. (A6),

$$\begin{aligned} -\frac{1}{J_K} &= -\rho_0(\mu) \int_0^{D-\mu} \frac{dE}{2E} \tanh\left(\frac{E}{2T_K}\right) \\ &\quad - \rho_0(\mu) \int_{D-\mu}^{D+\mu} \frac{dE}{E} n_F(-E) \\ &\quad + \int_{-D-\mu}^{D-\mu} \frac{dE}{E} [\rho_0(\mu + E) - \rho_0(\mu)]n_F(E), \end{aligned} \quad (\text{A7})$$

where D is a bandwidth cutoff such that $\rho(E) = 0$ when $|E| > D$. Taking the limit of low Kondo temperature $T_K \ll D, \mu$, we obtain the following approximate equation:

$$\begin{aligned} \frac{1}{J_K} &= \rho_0(\mu) \ln\left(\frac{2e^{\gamma_E}(D + \mu)}{\pi T}\right) \\ &\quad - \int_{-D-\mu}^0 \frac{dE}{E} [\rho_0(\mu + E) - \rho_0(\mu)], \end{aligned} \quad (\text{A8})$$

improving the prefactor in the expression of the Kondo temperature by taking into account the variation of the density of states with the energy.

2. Derivation of the resonance width

We have seen that both Γ and μ_f vanish at and above the Kondo temperature. Hereafter, we will consider the limit of small Kondo coupling, and we will thus assume that Γ and μ_f remain small compared to the noninteracting electron characteristic energy scales, even below the Kondo temperature where these quantities are not vanishing any more. If we take first Eq. (A2), and make the approximations $\Sigma'(E) = 0$ and $\Sigma''(E) = \Sigma''(0) = -\Gamma$, we obtain

$$\frac{1}{2} = \int_{-\infty}^{\infty} \frac{dE}{\pi} \frac{\Gamma}{(E + \mu_f)^2 + \Gamma^2} n_F(E) \simeq n_F(-\mu_f), \quad (\text{A9})$$

so we have to take also $\mu_f = 0$. Inserting our approximations in the denominator of (A1), we obtain a second equation:

$$-\frac{1}{J_K} = \int_{-\infty}^{\infty} dE \frac{E n_F(E)\rho_0(\mu + E)}{E^2 + \Gamma^2}. \quad (\text{A10})$$

We introduce the bandwidth cutoff D such that $\rho_0(E) = 0$ if $|E| > D$. We can then rewrite Eq. (A10) in the following form:

$$-\frac{1}{J_K} = \rho_0(\mu) \int_{-D-\mu}^{D-\mu} dE \frac{En_F(E)}{E^2 + \Gamma^2} + \int_{-D-\mu}^{D-\mu} dE \frac{En_F(E)[\rho_0(\mu + E) - \rho_0(\mu)]}{E^2 + \Gamma^2}. \quad (\text{A11})$$

In the rightmost integral of the right-hand side, $\rho(\mu + E) - \rho(\mu)$ vanishes for $E = 0$, so we can neglect Γ in the denominator. This gives the final equation:

$$-\frac{1}{J_K \rho_0(\mu)} = \int_{-D-\mu}^{D-\mu} \frac{En_F(E)}{E^2 + \Gamma^2} dE + \int_{-D-\mu}^{D-\mu} \frac{\rho(E + \mu) - \rho(\mu)}{\rho_0(\mu)} n_F(E) \frac{dE}{E}. \quad (\text{A12})$$

With that approximation, and taking the zero temperature limit, we obtain

$$\Gamma(T = 0) = (D + \mu) \exp \left[-\frac{1}{J_K \rho_0(\mu)} - \int_{-D-\mu}^0 \frac{dE}{E} \frac{\rho_0(\mu + E) - \rho_0(\mu)}{\rho_0(\mu)} \right]. \quad (\text{A13})$$

We note that $\Gamma(T = 0)/T_K = 2e^{\gamma_E}/\pi \simeq 2.26$ for such level of approximation. For finite temperature, we can replace $n_F(E)$ with $\theta(-E)$ in the integral over the density of states in the right-hand side of Eq. (A12). Using that approximation, we can write

$$\ln \left(\frac{\Gamma(T = 0)}{\Gamma(T)} \right) = \int_{-\infty}^{\infty} \frac{du}{4 \cosh^2 u} \ln \left(1 + \frac{4T^2 u^2}{\Gamma^2} \right). \quad (\text{A14})$$

These equations imply that $\Gamma(T) = \Gamma(T = 0)\varphi[\Gamma(T = 0)/T]$, so given the relation between $\Gamma(T = 0)$ and T_K , $\Gamma(T) = \Gamma(T = 0)\varphi(T_K/T)$.

APPENDIX B: ASYMPTOTIC APPROXIMATION FOR THE GREEN'S FUNCTION IN THE PRESENCE OF WARPING

The exact Green's function of the surface electrons is

$$G_0(\mathbf{r}, i\nu_n) = \int \frac{d^2\mathbf{k}}{(2\pi)^2} \frac{i\nu_n + \mu + v_F \hat{\mathbf{z}} \cdot (\boldsymbol{\sigma} \times \mathbf{k}) + \frac{\lambda}{2}(k_+^3 + k_-^3)\sigma^z}{(i\nu_n + \mu)^2 - v_F^2 k^2 - \left[\frac{\lambda}{2}(k_+^3 + k_-^3) \right]^2} e^{i\mathbf{k} \cdot \mathbf{r}}. \quad (\text{B1})$$

Using polar coordinates, we can express the Green's function (B1) as a series:

$$G_0(r, \theta, i\nu_n) = \int \frac{k dk}{(2\pi)^2} \int d\phi \frac{iz + i v_F k (\sigma^+ e^{-i\phi} - \sigma_- e^{i\phi}) + \lambda k^3 \cos(3\phi) \sigma^z}{\sqrt{(z^2 + v_F^2 k^2)(z^2 + v_F^2 k^2 + \lambda^2 k^6)}} e^{ikr \cos(\phi - \theta)} \times \sum_{m=-\infty}^{\infty} \left(\frac{\lambda^2 k^6}{\left[\sqrt{(z^2 + v_F^2 k^2)} + \sqrt{(z^2 + v_F^2 k^2 + \lambda^2 k^6)} \right]^2} \right)^{|m|} (-e^{i6\phi})^m, \quad (\text{B2})$$

where $z = \nu_n - i\mu$. To obtain an asymptotic expansion of $G(r, \theta, i\nu_n)$ to lowest order in λ it is enough to consider the term $m = 0$. We then have to consider the integral

$$G_0(r, \theta, i\nu_n) = \int \frac{k dk}{(2\pi)^2} \int d\phi \frac{iz + i v_F k (\sigma^+ e^{-i\phi} - \sigma_- e^{i\phi}) + \lambda k^3 \cos(3\phi) \sigma^z}{\sqrt{(z^2 + v_F^2 k^2)(z^2 + v_F^2 k^2 + \lambda^2 k^6)}} e^{ikr \cos(\phi - \theta)} + \dots, \quad (\text{B3})$$

where \dots denotes corrections of higher order in λ . After integration with respect to ϕ this expression gives

$$G_0(r, \theta, i\nu_n) = \int_0^{\infty} dk \frac{izk J_0(kr) - v_F k^2 (\sigma^+ e^{-i\theta} - \sigma_- e^{i\theta}) J_1(kr) - i\lambda k^4 \cos(3\theta) \sigma^z J_3(kr)}{2\pi \sqrt{(z^2 + v_F^2 k^2)(z^2 + v_F^2 k^2 + \lambda^2 k^6)}} \quad (\text{B4})$$

$$\equiv \frac{iz}{2\pi} I - \frac{v_F}{2\pi} (\sigma^+ e^{-i\theta} - \sigma_- e^{i\theta}) I' - \frac{i\lambda}{2\pi} \cos(3\theta) \sigma^z I''. \quad (\text{B5})$$

In the limit $\lambda \rightarrow 0$, we have from Eq. (11.4.44) in Ref. 74

$$I \rightarrow \int_0^{\infty} dk \frac{k J_0(kr)}{z^2 + v_F^2 k^2} = \frac{1}{v_F^2} K_0 \left(\frac{|v_n| - i\mu \operatorname{sgn}(v_n)}{v_F} r \right), \quad (\text{B6})$$

$$I' \rightarrow \int_0^{\infty} dk \frac{k^2 J_1(kr)}{z^2 + v_F^2 k^2} = \frac{|v_n| - i\mu \operatorname{sgn}(v_n)}{v_F^3} K_1 \left(\frac{|v_n| - i\mu \operatorname{sgn}(v_n)}{v_F} r \right), \quad (\text{B7})$$

with corrections of order λ^2 . We are thus left with the evaluation of the following integral:

$$I'' = \int_0^{+\infty} \frac{k^4 J_3(kr) dk}{\sqrt{[z^2 + (v_F k)^2][z^2 + (v_F k)^2 + \lambda^2 k^6]}}. \quad (\text{B8})$$

In the expression (B8) we cannot take the limit $\lambda \rightarrow 0$ directly before integrating as we would obtain a divergent integral. Instead, we will first make integrations by parts using Eq. (9.1.30) in Ref. 74 to obtain an asymptotic expansion. The first integration by parts gives

$$I'' = \frac{1}{r} \int_0^{+\infty} dk k^4 J_4(kr) \left[\frac{v_F^2 k}{(z^2 + v_F^2 k^2)^{3/2} (z^2 + v_F^2 k^2 + \lambda^2 k^6)^{1/2}} + \frac{v_F^2 k + 3\lambda^2 k^5}{(z^2 + v_F^2 k^2)^{1/2} (z^2 + v_F^2 k^2 + \lambda^2 k^6)^{3/2}} \right] \quad (\text{B9})$$

$$= \frac{v_F^2}{r} \int_0^{+\infty} dk k^5 J_4(kr) \left[\frac{1}{(z^2 + v_F^2 k^2)^{3/2} (z^2 + v_F^2 k^2 + \lambda^2 k^6)^{1/2}} + \frac{1}{(z^2 + v_F^2 k^2)^{1/2} (z^2 + v_F^2 k^2 + \lambda^2 k^6)^{3/2}} \right] + \dots, \quad (\text{B10})$$

where \dots denotes the third term in Eq. (B9), which will be shown to be negligible in the limit $\lambda \rightarrow 0$ in Appendix C. Using another integration by parts, we thus have

$$I'' \simeq \frac{v_F^2}{r^2} \int_0^{+\infty} k^5 J_5(kr) \left[\frac{3v_F^2 k}{(z^2 + v_F^2 k^2)^{5/2} (z^2 + v_F^2 k^2 + \lambda^2 k^6)^{1/2}} + \frac{v_F^2 k + 3\lambda^2 k^5}{(z^2 + v_F^2 k^2)^{3/2} (z^2 + v_F^2 k^2 + \lambda^2 k^6)^{3/2}} \right] \\ + \frac{v_F^2}{r^2} \int_0^{+\infty} k^5 J_5(kr) \left[\frac{v_F^2 k}{(z^2 + v_F^2 k^2)^{3/2} (z^2 + v_F^2 k^2 + \lambda^2 k^6)^{3/2}} + \frac{3(v_F^2 k + 3\lambda^2 k^5)}{(z^2 + v_F^2 k^2)^{1/2} (z^2 + v_F^2 k^2 + \lambda^2 k^6)^{5/2}} \right]. \quad (\text{B11})$$

If we take the limit $\lambda \rightarrow 0$ (justification for this can be found in Appendix C) in the above expression, we obtain a convergent integral:

$$I'' \rightarrow \frac{8v_F^4}{r^2} \int_0^{+\infty} \frac{k^6 J_5(kr)}{(z^2 + v_F^2 k^2)^3} = \frac{[|v_n| - i\mu \operatorname{sgn}(v_n)]^3}{v_F^5} K_3 \left(\frac{|v_n| - i\mu \operatorname{sgn}(v_n)}{v_F} r \right). \quad (\text{B12})$$

We can check that the terms proportional to λ^2 give contributions that are vanishing in the limit $\lambda \rightarrow 0$.

Invoking the asymptotic expressions (B6), (B7), and (B12) together in Eq. (B5), we obtain the following approximation for the Green's function in the limit of small warping:

$$G(r, \theta, i v_n) \simeq \frac{i v_n + \mu}{2\pi v_F^2} \left[K_0 \left(\frac{|v_n| - i\mu \operatorname{sgn}(v_n)}{v_F} r \right) + i(\sigma^+ e^{-i\theta} - \sigma^- e^{i\theta}) K_1 \left(\frac{|v_n| - i\mu \operatorname{sgn}(v_n)}{v_F} r \right) \operatorname{sgn}(v_n) \right. \\ \left. + \frac{\lambda}{v_F} \sigma^z \left(\frac{i v_n + \mu}{v_F} \right)^2 K_3 \left(\frac{|v_n| - i\mu \operatorname{sgn}(v_n)}{v_F} r \right) \operatorname{sgn}(v_n) \cos 3\theta \right]. \quad (\text{B13})$$

APPENDIX C: EVALUATION OF THE REMAINDERS

We consider the integral giving the remainder in Eq. (B9):

$$I_3 = \frac{3\lambda^2}{r} \int_0^{+\infty} dk \frac{k^9 J_4(kr)}{[z^2 + (vk)^2]^{1/2} [z^2 + (vk)^2 + \lambda^2 k^6]^{3/2}}. \quad (\text{C1})$$

With the change of variables $k = \sqrt{v_F/\lambda} u$, the integral I_3 is rewritten:

$$I_3 = \frac{3}{\lambda v_F r} \int_0^{+\infty} du \frac{u^9 J_4(au)}{(b^2 + u^2)^{1/2} (b^2 + u^2 + u^6)^{3/2}}, \quad (\text{C2})$$

with $a = r(v_F/\lambda)^{1/2}$ and $b^2 = \lambda z^2/v_F^3$. To obtain an upper bound for the integral, we use three successive integration by parts to rewrite

$$I_3 = \frac{3}{a^3 \lambda v_F r} \int_0^{+\infty} du \frac{u^7 J_7(ua) P(u)}{(b^2 + u^2)^{7/2} (b^2 + u^2 + u^6)^{9/2}}, \quad (\text{C3})$$

where the polynomial $P(u)$ has the following expression:

$$P(u) = 480u^{22} + 1200b^2u^{20} + 1050b^4u^{18} - 360u^{18} + 315b^6u^{16} - 3276b^2u^{16} - 7200b^4u^{14} - 6084b^6u^{12} - 432b^2u^{12} \\ - 1800b^8u^{10} - 432b^4u^{10} + 1152b^6u^8 - 96b^2u^8 + 1872b^8u^6 - 192b^4u^6 + 720b^{10}u^4 + 192b^8u^2 + 96b^{10}. \quad (\text{C4})$$

The numerator in Eq. (C3) is $O(u^{57/2})$, while the denominator is $O(u^{34})$ for $u \rightarrow \infty$ making the integral in Eq. (C3) convergent. Moreover, an upper bound for the integral is given by

$$\int_0^{+\infty} du \frac{|P(u)|}{\sqrt{2}(b^2 + u^2 + u^6)^{9/2}}, \quad (\text{C5})$$

where we have used the inequalities⁷⁴ $|J_7(u)| < 1/\sqrt{2}$ and $(b^2 + u^2)^{-7/2} < u^{-7}$. We can then majorize the polynomial $P(u)$ by the sum of the absolute value of its monomials. For monomials of degree $n \geq 9$, we can also use the inequality $(b^2 + u^2 + u^6)^{9/2} > u^9(1 + u^4)$ to obtain an upper bound larger than b . For the monomials of degree $n < 8$, we obtain an upper bound of the following form:

$$b^m \int_0^{+\infty} \frac{u^n du}{(b^2 + u^2 + u^6)^{9/2}} < b^m \int_0^{+\infty} \frac{u^n du}{(b^2 + u^2)^{9/2}} = b^{n+m-8} \int_0^{+\infty} \frac{u^n du}{(1 + u^2)^{9/2}}. \quad (\text{C6})$$

From the expression (C4) of $P(u)$, we see that these terms contribute expressions $O(b^2)$. In the case of $n = 8$, we have to consider

$$\int_0^{+\infty} \frac{u^8 du}{(b^2 + u^2 + u^6)^{9/2}} \leq \int_0^{1/b} du \frac{u^8}{(1 + u^2)^{9/2}} + \int_1^{+\infty} \frac{du}{u(1 + u^4)^{9/2}}. \quad (\text{C7})$$

Inspecting the polynomial $P(u)$, we see that the contribution of the u^8 terms will be $O(b^2 |\ln b|)$. Putting all contributions together, we see that

$$I_3 \leq \frac{3}{a^3 \lambda v_F r} [C + O(b^2 |\ln b|)] \quad (\text{C8})$$

$$\leq \frac{3}{v_F^2 r^3} \sqrt{\frac{\lambda}{v_F}} [C + O(\lambda |\ln \lambda|)]. \quad (\text{C9})$$

So $I_3 = O(\lambda^{1/2})$ for $\lambda \rightarrow 0$. This establishes that this term gives a subdominant contribution to the Matsubara Green's function.

We can apply the same method to the remaining integrals appearing in Eq. (B11). If we consider the integral

$$I_4 = \int_0^\infty \frac{\lambda^2 k^{10} J_5(kr)}{(z^2 + v_F^2 k^2)^{3/2} (z^2 + v_F^2 k^2 + \lambda^2 k^6)^{3/2}}, \quad (\text{C10})$$

by the same change of variables $k = (v/\lambda)^{1/2} u$, we can transform it into

$$I_4 = \frac{1}{v_F^{7/2} \lambda^{1/2}} \int_0^{+\infty} \frac{u^{10} J_5(ua)}{(b^2 + u^2)^{3/2} (b^2 + u^2 + u^6)^{3/2}}. \quad (\text{C11})$$

Integrating by parts twice, we rewrite

$$I_4 = \frac{1}{v_F^{7/2} a^2 \lambda^{1/2}} \int_0^\infty du \frac{u^7 J_7(ua) P_4(u)}{(b^2 + u^2)^{7/2} (b^2 + u^2 + u^6)^{7/2}}, \quad (\text{C12})$$

where

$$P_4(u) = 80u^{17} + 100b^2u^{15} + 35b^4u^{13} + 28u^{13} - 84b^2u^{11} - 204b^4u^9 + 8u^9 - 92b^6u^7 - 16b^2u^7 - 48b^4u^5 - 16b^6u^3 + 8b^8u. \quad (\text{C13})$$

We can show that the integral remains finite in the limit of $\lambda \rightarrow 0$ and, as a result, $I_4 = O(\lambda^{1/2})$.

Similarly, for the integral,

$$I_5 = \int_0^{+\infty} \frac{\lambda^2 k^{10} J_5(kr)}{(z^2 + v_F^2 k^2)^{1/2} (z^2 + v_F^2 k^2 + \lambda^2 k^6)^{5/2}}, \quad (\text{C14})$$

we can rewrite

$$I_5 = \frac{1}{v_F^{7/2} \lambda^{1/2}} \int_0^{+\infty} \frac{u^{10} J_5(ua)}{(b^2 + u^2)^{1/2} (b^2 + u^2 + u^6)^{5/2}}, \quad (\text{C15})$$

and by integrating by parts twice, we find

$$I_5 = \frac{1}{a^2 v_F^{7/2} \lambda^{1/2}} \int_0^{+\infty} \frac{u^7 J_7(ua) P_5(u)}{(b^2 + u^2)^{5/2} (b^2 + u^2 + u^6)^{9/2}}, \quad (\text{C16})$$

where

$$P_5(u) = 168u^{17} + 308b^2u^{15} + 143b^4u^{13} + 36u^{13} - 108b^2u^{11} - 308b^4u^9 + 8u^9 - 164b^6u^7 - 16b^2u^7 - 48b^4u^5 - 16b^6u^3 + 8b^8u. \quad (\text{C17})$$

Repeating the previous reasoning, we again establish that $I_5 = O(\lambda^{1/2})$.

It should be noted that the integrations by part can be iterated as long as the resulting integrals have a finite upper bound for small λ . This implies that our $O(\sqrt{\lambda})$ estimate for I_3 , I_4 , and I_5 is only a conservative one. If the integrations by part can be repeated indefinitely, the result of the process is that $I_{3,4,5} = O(\lambda^n)$ for any $n > 0$, a hint that the integrals may actually vanish with an essential singularity in the limit of $\lambda \rightarrow 0$.

-
- ¹M. Zahid Hasan and J. E. Moore, *Annu. Rev. Condens. Matter Phys.* **2**, 55 (2011).
- ²M. Z. Hasan and C. L. Kane, *Rev. Mod. Phys.* **82**, 3045 (2010).
- ³X. Qi and S. Zhang, *Rev. Mod. Phys.* **83**, 1057 (2011).
- ⁴L. Fu, C. L. Kane, and E. J. Mele, *Phys. Rev. Lett.* **98**, 106803 (2007).
- ⁵J. E. Moore and L. Balents, *Phys. Rev. B* **75**, 121306 (2007).
- ⁶R. Roy, *Phys. Rev. B* **79**, 195321 (2009).
- ⁷A. H. Castro Neto, F. Guinea, N. M. R. Peres, K. S. Novoselov, and A. K. Geim, *Rev. Mod. Phys.* **81**, 109 (2009).
- ⁸H. Nielsen and M. Ninomiya, *Phys. Lett. B* **105**, 219 (1981).
- ⁹D. Hsieh, D. Qian, L. Wray, Y. Xia, Y. S. Hor, R. J. Cava, and M. Z. Hasan, *Nature (London)* **452**, 970 (2008).
- ¹⁰H. Zhang, C. Liu, X. Qi, X. Dai, Z. Fang, and S. Zhang, *Nature Phys.* **5**, 438 (2009).
- ¹¹Y. L. Chen, J. G. Analytis, J. Chu, Z. K. Liu, S. Mo, X. L. Qi, H. J. Zhang, D. H. Lu, X. Dai, Z. Fang, S. C. Zhang, I. R. Fisher, Z. Hussain, and Z. Shen, *Science* **325**, 178 (2009).
- ¹²T. Sato, K. Segawa, H. Guo, K. Sugawara, S. Souma, T. Takahashi, and Y. Ando, *Phys. Rev. Lett.* **105**, 136802 (2010).
- ¹³C. Brüne, C. X. Liu, E. G. Novik, E. M. Hankiewicz, H. Buhmann, Y. L. Chen, X. L. Qi, Z. X. Shen, S. C. Zhang, and L. W. Molenkamp, *Phys. Rev. Lett.* **106**, 126803 (2011).
- ¹⁴C. Bouvier, T. Meunier, P. Ballet, X. Baudry, R. B. G. Kramer, and L. Lévy, arXiv:1112.2092.
- ¹⁵H. Ji, J. M. Allred, M. K. Fucillo, M. E. Charles, M. Neupane, L. A. Wray, M. Z. Hasan, and R. J. Cava, *Phys. Rev. B* **85**, 201103(R) (2012).
- ¹⁶K. Kuroda, H. Miyahara, M. Ye, S. V. Ereemeev, Y. M. Koroteev, E. E. Krasovskii, E. V. Chulkov, S. Hiramoto, C. Moriyoshi, Y. Kuroiwa, K. Miyamoto, T. Okuda, M. Arita, K. Shimada, H. Namatame, M. Taniguchi, Y. Ueda, and A. Kimura, *Phys. Rev. Lett.* **108**, 206803 (2012).
- ¹⁷S. Souma, K. Eto, M. Nomura, K. Nakayama, T. Sato, T. Takahashi, K. Segawa, and Y. Ando, *Phys. Rev. Lett.* **108**, 116801 (2012).
- ¹⁸M. Neupane, S.-Y. Xu, L. A. Wray, A. Petersen, R. Shankar, N. Alidoust, C. Liu, A. Fedorov, H. Ji, J. M. Allred, Y. S. Hor, T.-R. Chang, H.-T. Jeng, H. Lin, A. Bansil, R. J. Cava, and M. Z. Hasan, *Phys. Rev. B* **85**, 235406 (2012).
- ¹⁹H.-J. Zhang, S. Chadov, L. Muehler, B. Yan, X.-L. Qi, J. Kübler, S.-C. Zhang, and C. Felser, *Phys. Rev. Lett.* **106**, 156402 (2011).
- ²⁰B. Yan, L. Muehler, X.-L. Qi, S.-C. Zhang, and C. Felser, *Phys. Rev. B* **85**, 165125 (2012).
- ²¹B. Yan and S.-C. Zhang, *Rep. Prog. Phys.* **75**, 096501 (2012).
- ²²J. Kondo, *Prog. Theor. Phys.* **32**, 37 (1964).
- ²³P. Nozières, *J. Low Temp. Phys.* **17**, 31 (1974).
- ²⁴K. G. Wilson, *Rev. Mod. Phys.* **47**, 773 (1975).
- ²⁵N. Andrei, K. Furuya, and J. H. Lowenstein, *Rev. Mod. Phys.* **55**, 331 (1983).
- ²⁶C. Wu, B. A. Bernevig, and S. C. Zhang, *Phys. Rev. Lett.* **96**, 106401 (2006).
- ²⁷Y. Tanaka, A. Furusaki, and K. A. Matveev, *Phys. Rev. Lett.* **106**, 236402 (2011).
- ²⁸X. Y. Feng, W. Q. Chen, J. H. Gao, Q. H. Wang, and F. C. Zhang, *Phys. Rev. B* **81**, 235411 (2010).
- ²⁹R. Žitko, *Phys. Rev. B* **81**, 241414 (2010).
- ³⁰M.-T. Tran and K.-S. Kim, *Phys. Rev. B* **82**, 155142 (2010).
- ³¹A. K. Mitchell, D. Schuricht, M. Vojta, and L. Fritz, *Phys. Rev. B* **87**, 075430 (2013).
- ³²X.-Y. Feng and F.-C. Zhang, *J. Phys.: Condens. Matter* **23**, 105602 (2011).
- ³³A. C. Hewson, *The Kondo Problem to Heavy Fermions*, Cambridge Studies in Magnetism Vol. 2 (Cambridge University Press, Cambridge, UK, 1997).
- ³⁴H.-J. Noh, J. Jeong, E.-J. Cho, H.-K. Lee, and H.-D. Kim, *Europhys. Lett.* **96**, 47002 (2011).
- ³⁵L. A. Wray, S.-Y. Xu, Y. Xia, D. Hsieh, A. V. Fedorov, Y. S. Hor, R. J. Cava, A. Bansil, H. Lin, and M. Z. Hasan, *Nature Phys.* **7**, 32 (2011).
- ³⁶M. R. Scholz, J. Sánchez-Barriga, D. Marchenko, A. Varykhalov, A. Volykhov, L. V. Yashina, and O. Rader, *Phys. Rev. Lett.* **108**, 256810 (2012).
- ³⁷L. R. Sheldford, T. Hesjedal, L. Collins-McIntyre, S. S. Dhesi, F. Maccherozzi, and G. van der Laan, *Phys. Rev. B* **86**, 081304 (2012).
- ³⁸M. Ye, S. V. Ereemeev, K. Kuroda, E. E. Krasovskii, E. V. Chulkov, Y. Takeda, Y. Saitoh, K. Okamoto, S. Y. Zhu, K. Miyamoto, M. Arita, M. Nakatake, T. Okuda, Y. Ueda, K. Shimada, H. Namatame, M. Taniguchi, and A. Kimura, *Phys. Rev. B* **85**, 205317 (2012).
- ³⁹T. Valla, Z.-H. Pan, D. Gardner, Y. S. Lee, and S. Chu, *Phys. Rev. Lett.* **108**, 117601 (2012).
- ⁴⁰M. Dzero, K. Sun, P. Coleman, and V. Galitski, *Phys. Rev. B* **85**, 045130 (2012).
- ⁴¹M. Dzero, *Eur. Phys. J. B* **85**, 297 (2012).
- ⁴²M.-T. Tran, T. Takimoto, and K.-S. Kim, *Phys. Rev. B* **85**, 125128 (2012).
- ⁴³X. Zhang, H. Zhang, J. Wang, C. Felser, and S.-C. Zhang, *Science* **335**, 1464 (2012).
- ⁴⁴X. Zhang, N. P. Butch, P. Syers, S. Ziemak, R. L. Greene, and J. Paglione, *Phys. Rev. X* **3**, 011011 (2013).
- ⁴⁵J. Botimer, D. Kim, S. Thomas, T. Grant, Z. Fisk, and J. Xia, arXiv:1211.6769.
- ⁴⁶G. Binnig, H. Rohrer, C. Gerber, and E. Weibel, *Phys. Rev. Lett.* **49**, 57 (1982).
- ⁴⁷G. Binnig and H. Rohrer, *Rev. Mod. Phys.* **59**, 615 (1987).
- ⁴⁸V. Madhavan, W. Chen, T. Jamneala, M. F. Crommie, and N. S. Wingreen, *Science* **280**, 567 (1998).
- ⁴⁹V. Madhavan, W. Chen, T. Jamneala, M. F. Crommie, and N. S. Wingreen, *Phys. Rev. B* **64**, 165412 (2001).
- ⁵⁰N. Knorr, M. A. Schneider, L. Diekhöner, P. Wahl, and K. Kern, *Phys. Rev. Lett.* **88**, 096804 (2002).

- ⁵¹P. Wahl, L. Diekhöner, G. Wittich, L. Vitali, M. A. Schneider, and K. Kern, *Phys. Rev. Lett.* **95**, 166601 (2005).
- ⁵²Y.-S. Fu, S.-H. Ji, X. Chen, X.-C. Ma, R. Wu, C.-C. Wang, W.-H. Duan, X.-H. Qiu, B. Sun, P. Zhang, J.-F. Jia, and Q.-K. Xue, *Phys. Rev. Lett.* **99**, 256601 (2007).
- ⁵³O. Újsághy, J. Kroha, L. Szunyogh, and A. Zawadowski, *Phys. Rev. Lett.* **85**, 2557 (2000).
- ⁵⁴P. Roushan, J. Seo, C. V. Parker, Y. S. Hor, D. Hsieh, D. Qian, A. Richardella, M. Z. Hasan, R. J. Cava, and A. Yazdani, *Nature (London)* **460**, 1106 (2009).
- ⁵⁵H. Beidenkopf, P. Roushan, J. Seo, L. Gorman, I. Drozdov, Y. S. Hor, R. J. Cava, and A. Yazdani, *Nature Phys.* **7**, 939 (2011).
- ⁵⁶Z. Alpichshev, J. G. Analytis, J.-H. Chu, I. R. Fisher, and A. Kapitulnik, *Phys. Rev. B* **84**, 041104 (2011).
- ⁵⁷Z. Alpichshev, R. R. Biswas, A. V. Balatsky, J. G. Analytis, J.-H. Chu, I. R. Fisher, and A. Kapitulnik, *Phys. Rev. Lett.* **108**, 206402 (2012).
- ⁵⁸P. Cheng, T. Zhang, K. He, X. Chen, X. Ma, and Q. Xue, *Physica E* **44**, 912 (2012).
- ⁵⁹M. L. Teague, H. Chu, F.-X. Xiu, L. He, K.-L. Wang, and N.-C. Yeh, *Solid State Commun.* **152**, 747 (2012).
- ⁶⁰T. Zhang, N. Levy, J. Ha, Y. Kuk, and J. A. Stroscio, *Phys. Rev. B* **87**, 115410 (2013).
- ⁶¹I. Affleck, L. Borda, and H. Saleur, *Phys. Rev. B* **77**, 180404 (2008).
- ⁶²A. A. Abrikosov, *Physics* **2**, 5 (1965).
- ⁶³K. Kuroda, M. Arita, K. Miyamoto, M. Ye, J. Jiang, A. Kimura, E. E. Krasovskii, E. V. Chulkov, H. Iwasawa, T. Okuda, K. Shimada, Y. Ueda, H. Namatame, and M. Taniguchi, *Phys. Rev. Lett.* **105**, 076802 (2010).
- ⁶⁴J. An and C. S. Ting, *Phys. Rev. B* **86**, 165313 (2012).
- ⁶⁵N. Andrei, in *Low-Dimensional Quantum Field Theories For Condensed Matter Physicists*, edited by S. Lundqvist, G. Morandi, and L. Yu (World Scientific, Singapore, 1993), and references therein.
- ⁶⁶P. Adroguer, D. Carpentier, J. Cayssol, and E. Orignac, *New J. Phys.* **14**, 103027 (2012).
- ⁶⁷D. Withoff and E. Fradkin, *Phys. Rev. Lett.* **64**, 1835 (1990).
- ⁶⁸P. W. Anderson, G. Yuval, and D. R. Hamann, *Phys. Rev. B* **1**, 4464 (1970).
- ⁶⁹C. A. Büsser, G. B. Martins, L. Costa Ribeiro, E. Vernek, E. V. Anda, and E. Dagotto, *Phys. Rev. B* **81**, 045111 (2010).
- ⁷⁰Y. Nagaoka, *Phys. Rev.* **138**, A1112 (1965).
- ⁷¹H. Suhl, *Phys. Rev.* **138**, 515 (1965).
- ⁷²S. Burdin, A. Georges, and D. R. Grempel, *Phys. Rev. Lett.* **85**, 1048 (2000).
- ⁷³S. Burdin and V. Zlatić, *Phys. Rev. B* **79**, 115139 (2009).
- ⁷⁴M. Abramowitz and I. Stegun, *Handbook of Mathematical Functions* (Dover, New York, 1972).
- ⁷⁵M. Kuwabara, D. R. Clarke, and D. A. Smith, *Appl. Phys. Lett.* **56**, 2396 (1990).
- ⁷⁶G. Mussardo, *Phys. Rep.* **218**, 215 (1992).
- ⁷⁷H. Saleur, in *New Theoretical Approaches to Strongly Correlated Systems*, edited by A. M. Tsvelik, Nato Science Series: II: Mathematics, Physics and Chemistry, Vol. 23 (Kluwer Academic Publishers, Dordrecht, 2001), Chap. 3, p. 47.
- ⁷⁸J.-J. Zhu, D.-X. Yao, S.-C. Zhang, and K. Chang, *Phys. Rev. Lett.* **106**, 097201 (2011).
- ⁷⁹D. A. Abanin and D. A. Pesin, *Phys. Rev. Lett.* **106**, 136802 (2011).
- ⁸⁰M. Ruderman and C. Kittel, *Phys. Rev.* **96**, 99 (1954).
- ⁸¹T. Kasuya, *Prog. Theor. Phys.* **16**, 45 (1956).
- ⁸²K. Yosida, *Phys. Rev.* **106**, 893 (1957).
- ⁸³S. Doniach, *Physica B + C* **91**, 231 (1977).