



# Tracking of a dynamic graph using a signal theory approach: application to the study of a bike sharing system

Ronan Hamon, Pierre Borgnat, Patrick Flandrin, Céline Robardet

## ► To cite this version:

Ronan Hamon, Pierre Borgnat, Patrick Flandrin, Céline Robardet. Tracking of a dynamic graph using a signal theory approach: application to the study of a bike sharing system. ECCS'13, Sep 2013, Barcelone, Spain. pp.101. ensl-00875089

**HAL Id: ensl-00875089**

**<https://ens-lyon.hal.science/ensl-00875089>**

Submitted on 21 Oct 2013

**HAL** is a multi-disciplinary open access archive for the deposit and dissemination of scientific research documents, whether they are published or not. The documents may come from teaching and research institutions in France or abroad, or from public or private research centers.

L'archive ouverte pluridisciplinaire **HAL**, est destinée au dépôt et à la diffusion de documents scientifiques de niveau recherche, publiés ou non, émanant des établissements d'enseignement et de recherche français ou étrangers, des laboratoires publics ou privés.

# Tracking of a dynamic graph using a signal theory approach : application to the study of a bike sharing system

Ronan HAMON<sup>1,2</sup>, Pierre BORGNAT<sup>1</sup>, Patrick FLANDRIN<sup>1</sup>, Céline ROBARDET<sup>2</sup>

<sup>1</sup>Laboratoire de Physique de l'ENS de Lyon (UMR CNRS 5672)  
46, allée d'Italie 69364 Lyon cedex 07, France

<sup>2</sup>LIRIS, INSA de Lyon (UMR 5205) Bâtiment Blaise Pascal  
20, Avenue Albert Einstein 69621 Villeurbanne cedex, France

ronan.hamon@ens-lyon.fr, pierre.borgnat@ens-lyon.fr  
patrick.flandrins@ens-lyon.fr, celine.robardet@insa-lyon.fr

This work is supported by the programs ARC 5 and ARC 6 of the region Rhône-Alpes

**Abstract** – Dynamic graphs are useful objects to describe a network which evolves over time. We propose a signal theory approach to analyze them which consists of transforming the graph at each time step into a collection of signals and analyze these signals using spectral decomposition. An inverse transformation is also proposed and makes it possible to reduce the dimension of the graph and select the most significant edges. The method is applied on a real dynamic graph based on data about the bike sharing system Vélo'v in Lyon. The analysis of signals representing the graph highlights the weekly cycle of rentals and the inverse transformation enables us to obtain sparser graphs.

## 1 Introduction

Many networks, whether physical, biological or social, can be described by graphs which become dynamic if a time evolution is added. These graphs are difficult to study because there exist only a few tools to describe these objects. The aim here is to propose a new method to visualize synthetically time evolution of dynamic graphs. The originality of this method is to adopt a signal theory approach by computing frequency analysis on signals representing the graphs. The transformation in a collection of signals is computed using multidimensional scaling then specific frequency patterns of these series are linked to graph properties. Performing the transformation for each time step enables us to monitor the evolution of the frequency patterns and hence of the structure of the graph.

The interest of having a collection of signals which describe exactly the graph is that it enables to reduce easily the dimension of the graph by retaining only a few signals in the representation. The construction of approximated graphs from the original graph highlights graph properties such as communities structure.

An example of complex networks with a time evolution is the Vélo'v system [1]. Many big cities in the world propose a bike sharing system in which bikes are made available at any time for short trips. In Lyon, the Vélo'v program has been deployed since May 2005 and consists of 350 stations spread over all the agglomeration in which bikes can be hired or returned back. Thanks to a partnership with the operator JCDecaux and the "Grand Lyon" City Hall, anonymized data for the year 2011 were made available to us. Data consists of the records of trips, each documented with its starting date and departure station, its ending date and destination station and specific tags.

The study of such system has numerous goals as for instance viability of the system, its integration in the transportation scheme of the city or the social behaviors linked to the bike use. The system Vélo'v has been intensively studied in [3] for the period from May 2005 to December 2007. We propose in section 3 a dynamic graph approach of this system using the transformation into a collection of signals described in section 2.

## 2 Transformation from a graph to a collection of signals

### 2.1 Description of the method

**Notations** Let  $\mathcal{G} = \mathcal{V}, \mathcal{E}$  a simple undirected and unweighted graph where  $\mathcal{V}$  is the set of vertices (or nodes) of size  $\#\mathcal{V} = n$  and  $\mathcal{E}$  is the set of edges (or links) of size  $\#\mathcal{E} = m$ . We note  $(\mathbf{A}_{ij})_{i,j \in 1, \dots, n}$  its adjacency matrix.

**Principle** Shimada et al. [6] proposed a method to transform a graph into a collection of signals with  $n$  points indexed by the vertices of the graph by using classical multidimensional scaling (CMDS). The interest of this transformation is based on the fact that if  $n$  signals enable us to reconstruct exactly the original graph, it is also possible to reduce the representation retaining only a small number of signals.

This transformation consists of applying CMDS on a matrix distance between vertices of a graph, noted  $\Delta = (\delta)_{i,j \in 1, \dots, n}$  and defined for  $i, j \in \mathcal{V}$  by

$$\delta_{ij} = \begin{cases} 0 & \text{if } i = j \\ 1 & \text{if } a_{ij} = 1 \text{ and } i \neq j \\ w > 1 & \text{if } a_{ij} = 0 \text{ and } i \neq j \end{cases}$$

with  $w > 1$ . Following [6], we choose  $w = 1.1$ .

Multidimensional scaling (MDS) [2] is a set of mathematical techniques used to represent measurements of similarity (or dissimilarity) among pairs of objects as distances between points in a multidimensional space whose dimension is low. Classical MDS is a particular case of metric MDS where the dissimilarities are assumed to be Euclidean distances. The matrix  $\mathbf{X}$  of coordinates can be computed analytically. Starting with the distance matrix  $\Delta$ , we first compute a double centering of the matrix whose terms are squared :  $\mathbf{B} = -\frac{1}{2}\mathbf{J}\Delta^{(2)}\mathbf{J}$  with  $\mathbf{J} = \mathbf{I}_n - \frac{1}{n}\mathbf{1}_n\mathbf{1}_n^T$  where  $\mathbf{I}_n$  is the identity matrix and  $\mathbf{1}_n\mathbf{1}_n^T$  an  $n \times n$  matrix of ones.

The CMDS solution is given by  $\mathbf{X} = \mathbf{Q}_+\Lambda_+^{\frac{1}{2}}$  with  $\Lambda_+$  a diagonal matrix whose terms are the eigenvalues of the matrix  $\mathbf{B}$  sorted in an increasing order and  $\mathbf{Q}_+$  is the matrix of the corresponding eigenvectors. The obtained signals are the components (or columns) of the matrix  $\mathbf{X}$  and the  $j$ -th signal is noted  $\mathbf{X}^{(j)}$ . These signals are indexed by the vertices of the graph.

**Relabeling of a graph** Shimada et al. [6] show that ring lattices are transformed to periodic time series : each component is a cosine whose frequency depends on the number of the components. More generally, it can be relevant to describe signals using spectral analysis and hence link frequency features with graph properties. Nevertheless the spectral analysis is closely related to the indexation of signals and so to the numbering of the graph. It becomes necessary to find a good numbering of vertices in order to have good spectral properties. We propose a method based on the fact that we want to avoid brutal variations of signals. That means that it is necessary to have close numbering between neighbor vertices, which are defined closer in the distance matrix than unlinked vertices. This problem can be related to another graph labeling problem called cyclic bandwidth sum problem [5]. We proposed a heuristic to find a good labeling [4] which is not the subject of this submission.

**Inverse transformation** The reconstruction of a graph from a collection of signals is trivial if all components are retained according to the principle of the CMDS : the distance matrix  $\mathbf{D}$  between points in the Euclidean space is equal to the distance matrix  $\Delta$  and so a thresholding enables us to reconstruct the graph.

If less components are retained, the distances between points are neither equal to 1 nor to  $w$  but have a distribution whose width depends on the number of retained components. These distributions can be used to select the most significant links, considering that if an edge is related to a smaller distance than another edge, then it is more significant. This leads us to set a threshold on the distances under which one supposes that there is a significant edge and over which no edge is put. As the real distance between vertices is known, the distributions of distances between linked vertices and between unlinked vertices can be separated and it is possible to know in which interval the distributions overlap.

For a given ratio  $r$  of retained components over all components, the threshold is chosen so that the selected edges do not belong to the interval where the distributions overlap.

**Analysis of signals** Let us consider a collection of  $K$  signals indexed by  $n$  vertices. Several features can be computed to describe the components. We note  $S(k, f) = |\mathcal{F}\mathbf{X}^{(k)}(f)|^2$  which is estimated, for positive frequencies, on  $\frac{n}{2} + 1$  bins,  $\forall k \in \{1, \dots, K\}$ ,  $\mathcal{F}$  being the Fourier transform. We then compute the following features :

1. Energy of components :  $\forall k \in \{1, \dots, K\}, E_k = \|\mathbf{X}^{(k)}\|^2$
2. Energy of frequencies :  $\forall f \in \{1, \dots, \frac{n}{2} + 1\}, \bar{S}(f) = \sum_{k=1}^K S(k, f)$
3. Mean frequency by components :  $\forall k \in \{1, \dots, K\}, \hat{f}_k = \frac{\sum_{f=1}^{\frac{n}{2}+1} f S(k, f)}{\sum_{f=1}^{\frac{n}{2}+1} S(k, f)}$

These indicators can be linked to graph properties as it will be illustrated in section 2.2.

**Extension to dynamic graphs** Spectral analysis of signals derived from a transformation of a graph enables us to highlight relations between feature patterns and graph properties. This approach can be extended to dynamic graphs : temporal tracking of these features shows the evolution of the global structure of the graph. Considering that at each time step a dynamic graph is a static graph, the extension to dynamic graphs consists of the application of the method described previously on the derived static graph. The features described for static graphs can be visualized over time and hence help to track the structure of the dynamic graph.

## 2.2 Illustration

**Description of the studied graph** We apply the method to a graph with communities i.e, with groups of vertices more linked between them than with other vertices, at different scales. At a small scale, 16 communities are visible, then progressively the communities merge to form 8 communities, then 4 communities and finally at a large scale 2 communities. Figure 3a shows a colored representation of the graph.

**Analysis of signals** Figures 1a and 1b show the first and the second signals and their spectrum : it is relevant to notice that the signals have relatively flat parts, corresponding to vertices which are in the same communities. The reason of appearance of flatness is that the best manner to represent the graph with a few components is to group all vertices of a same community as one only node and hence give them close values in the signals. The flat signals are described by a high energy on low frequencies in the spectral decomposition.

The two first components can be compared to the components 21 and 22 shown in Figures 1c and 1d. In these components, the method carries on separating communities at a larger scale but also separates vertices within communities. These operations are represented by high energy on both low and high frequencies in the spectrum.

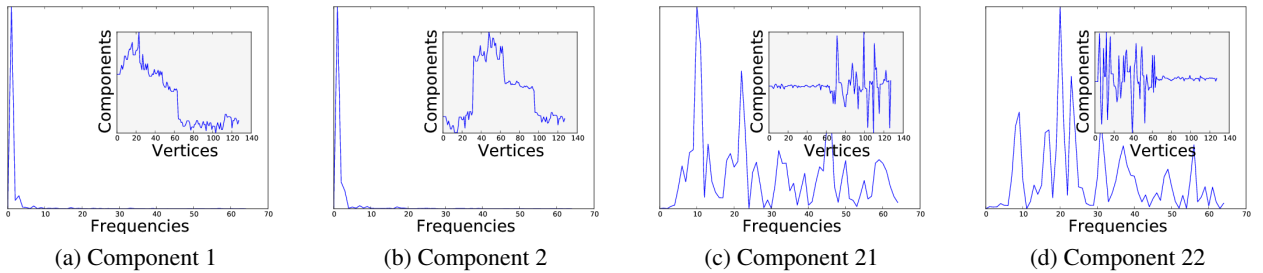


Figure 1: Spectra of four components and the corresponding signals in insert.

Figure 2a shows the energies of components averaged over frequencies. We can point out that the first components are the most energetic ones and hence contains a lot of information. The higher the number of the component is, the lower the energy. As described previously, the energy of the component is linked to the corresponding eigenvalues.

Figure 2b shows the energies of frequencies averaged over components. As we noticed previously looking at the first two components, we can remark that the energy of low frequencies is much higher than the energy of high frequencies.

This remark can be exhibited more clearly by displaying the energy with respect to both frequencies and components in Figure 2c : the energy is concentrated on low frequencies for the first components.

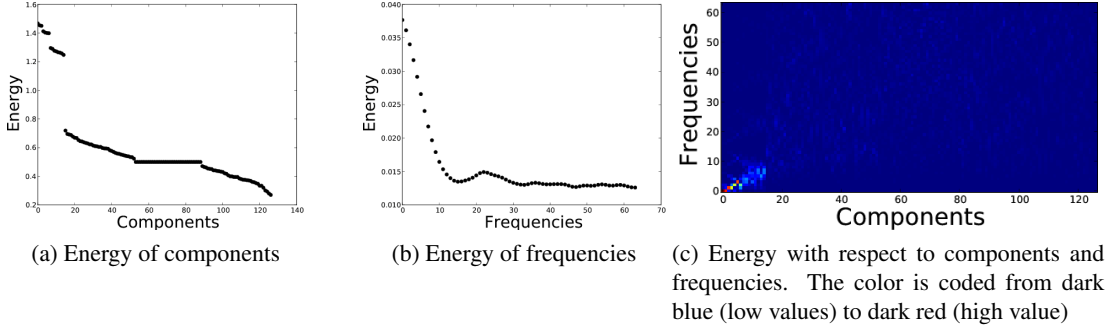


Figure 2: Energy with respect to components and frequencies

**Inverse transformation from signals to graph** Following the method described previously, we can construct approximated graphs where the retained edges are the most significant. Figure 3a shows the original graph, and Figures 3b, 3c and 3d show different reconstructions of the graph using different values of the ratio  $r$  of number of retained components over total number of components.

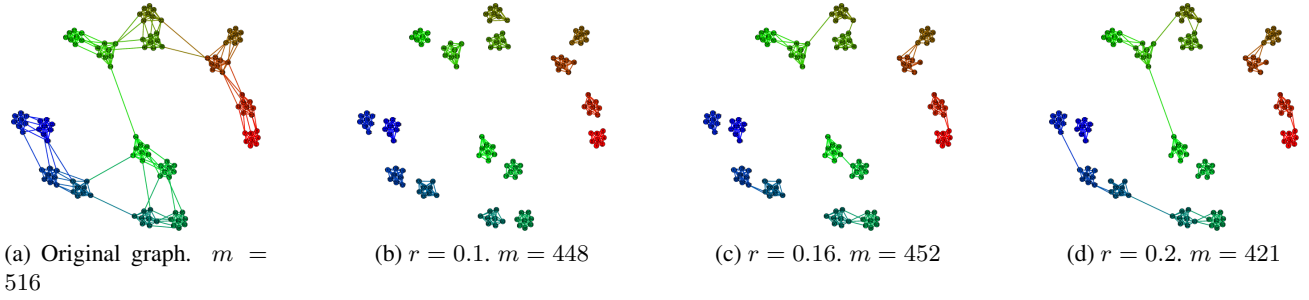


Figure 3: Original graph and reconstructed graphs using different values of ratio  $r$  between number of retained components and total number of components. The color indicates the community of nodes at the smaller scale and the proximity between colors shows the proximity between communities.

It is relevant to note that the value of the ratio  $r$  enables us to highlight the different levels of communities. With a low value of  $r$ , the most significant edges consist of the edges inside communities. The vertices inside a same community have indeed a strong relation between them. If the ratio  $r$  increases, edges between communities are discovered.

### 3 Application to the Vélo’v graph

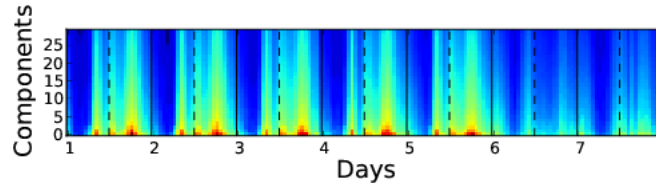
#### 3.1 Construction of the Vélo’v graph

Anonymized data for the year 2011 were made available to us by the operator JCDecaux and the “Grand Lyon” City Hall . Data consists of the records of trips, each documented with its starting date and departure station, its ending date and destination station and specific tags. Using these trips, we built a dynamic graph of the system Vélo’v for the year 2011: for each time step of 1 hour, a static graph is generated where the vertices are the stations which have an activity and an edge between two stations denotes that a bike has been hired in one of the two stations and been taken back in the other one.

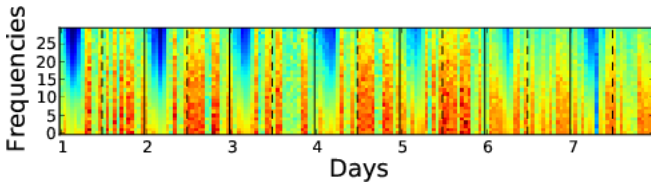
### 3.2 Analysis of the graph

We focus for the analysis on seven consecutive days from Monday 9th May, 2011 to Sunday 16th May. These days are a typical working week without public holiday nor school holidays. The transformation described in section 2 is performed on the dynamic graph built using the Vélo’v data.

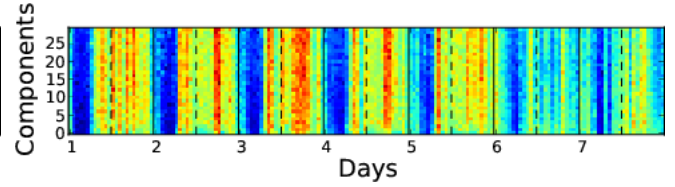
**Energy of components** Figure 4a shows the energy of components over time. We can easily notice the presence of a weekly cycle with the five working days and the week-end where the energy is lower. This graph can be related to the number of rentals as shown in figure 5a where the number of rentals per hour has been computed for the same week. It is strongly related to the number of edges 5b at each time step which has the same behavior over time, with presence of peak in the morning, at noon and in the evening which are likewise visible with high energy in the first components at the same hours.



(a) Energy of components over time

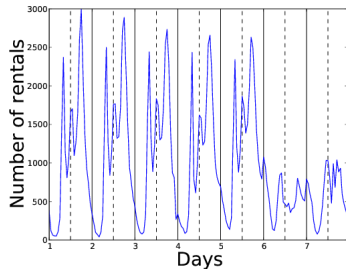


(b) Energy of frequencies averaged over all components over time

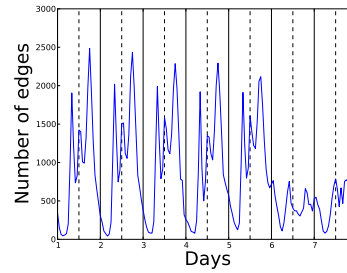


(c) Mean frequency of components over time

Figure 4: Analysis of the Vélo’v graph. The color is coded from dark blue (low value) to dark red (high value). The solid line represents midnight while the dashed line represents noon.



(a) Number of rentals per hour for the week from May 9, 2013 to May 16, 2013.



(b) Number of edges in the Vélo’v graph per hour for the week from May 9, 2013 to May 16, 2013.

Figure 5: The solid line represents midnight while the dashed line represents noon.

The analysis of the energy of frequencies over all components and the mean frequency of components is less obvious. It shows nonetheless that exists a structure of the graph, less dependent to the number of rentals. The presence of high frequencies in the first few components indicates the presence of structures inside the graph.

**Reconstruction of the Vélo'v graph** Following the method of reconstruction described in the previous section, we can build an approximation at each time step of the Vélo'v graph. We focus for this study on the day of May 9, 2013.

Figures 6a and 6c show the Vélo'v graph at 7am and 7pm while 6b and 6d show the reconstructed graph at the same hours using  $r = 0.53$ .

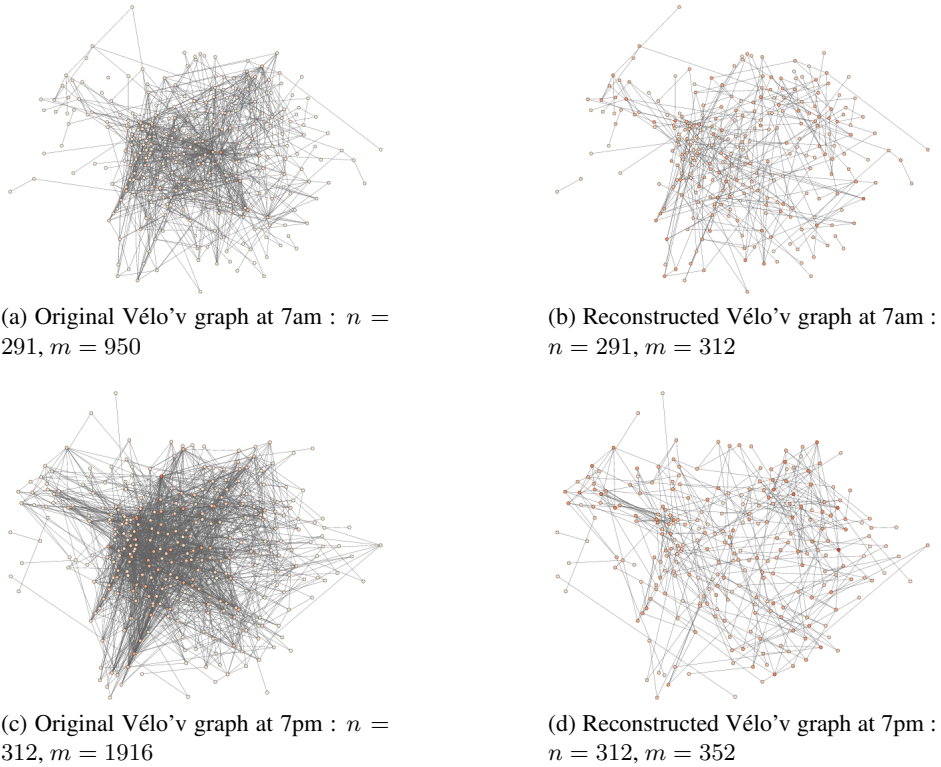


Figure 6: Visualization of the Vélo'v at different times. The color of vertices represents the degree, from white (low degree) to dark red (high degree).

We can see that the reconstructed graphs have less edges than the original graphs. It enables us to highlight more clearly the structure of the network as for instance the local hubs. Indeed in the original graph at 7am the station with the highest degree is near the railway station "Part-Dieu" which is a major business center. Its dominance hides other stations. In the reconstructed graph it is possible to avoid this effect and in some way to "normalize" the graph to catch also minor hubs.

## References

- [1] Grand lyon - Vélo'V. <http://www.velov.grandlyon.com/>.
- [2] I. Borg and P. Groenen. *Modern multidimensional scaling: Theory and applications*. Springer, 2005.
- [3] P. Borgnat, P. Abry, P. Flandrin, C. Robardet, J.-B. Rouquier, and E. Fleury. Shared bicycles in a city: a signal processing and data analysis perspective. *Advances in Complex Systems*, 14(03):415–438, June 2011.
- [4] R. Hamon, P. Borgnat, P. Flandrin, and C. Robardet. Relabeling nodes according to their neighbourhood - <http://perso.ens-lyon.fr/ronan.hamon/files/relabeling.pdf>. Technical report, 2013.
- [5] H. Jianxiu. Cyclic bandwidth sum of graphs. *Applied Mathematics-A Journal of Chinese Universities*, 16(2):115–121, 2001.
- [6] Y. Shimada, T. Ikeguchi, and T. Shigehara. From networks to time series. *Phys. Rev. Lett.*, 109(15):158701, Oct. 2012.