



HAL
open science

On monodromy eigenfunctions of Heun equations and boundaries of phase-lock areas in a model of overdamped Josephson effect

V M Buchstaber, Alexey Glutsyuk

► **To cite this version:**

V M Buchstaber, Alexey Glutsyuk. On monodromy eigenfunctions of Heun equations and boundaries of phase-lock areas in a model of overdamped Josephson effect. Proceedings of the Steklov Institute of Mathematics, 2017, 297 (2017), pp.50–89. 10.1134/S0081543817040046 . ensl-01413590v2

HAL Id: ensl-01413590

<https://ens-lyon.hal.science/ensl-01413590v2>

Submitted on 14 Dec 2017

HAL is a multi-disciplinary open access archive for the deposit and dissemination of scientific research documents, whether they are published or not. The documents may come from teaching and research institutions in France or abroad, or from public or private research centers.

L'archive ouverte pluridisciplinaire **HAL**, est destinée au dépôt et à la diffusion de documents scientifiques de niveau recherche, publiés ou non, émanant des établissements d'enseignement et de recherche français ou étrangers, des laboratoires publics ou privés.

On monodromy eigenfunctions of Heun equations and boundaries of phase-lock areas in a model of overdamped Josephson effect

V.M.Buchstaber^{*†‡}, A.A.Glutsyuk[§] ¶

June 6, 2017

Abstract

We study a family of double confluent Heun equations of the form $\mathcal{L}E = 0$, where $\mathcal{L} = \mathcal{L}_{\lambda, \mu, n}$ is a family of differential operators of order two acting on germs of holomorphic functions in one complex variable. They depend on complex parameters λ, μ, n . Its restriction to real parameters satisfying the inequality $\lambda + \mu^2 > 0$ is a linearization of the family of nonlinear equations on two-torus modeling the Josephson effect in superconductivity. We show that for every $b, n \in \mathbb{C}$ satisfying a certain “non-resonance condition” and every parameter values $\lambda, \mu \in \mathbb{C}, \mu \neq 0$ there exists an entire function $f_{\pm} : \mathbb{C} \rightarrow \mathbb{C}$ (unique up to constant factor) such that $z^{-b}\mathcal{L}(z^b f_{\pm}(z^{\pm 1})) = d_{0\pm} + d_{1\pm}z$ for some $d_{0\pm}, d_{1\pm} \in \mathbb{C}$. The constants $d_{j,\pm}$ are expressed as functions of the parameters. This result has several applications. First of all, it gives the description of those values λ, μ, n, b for which the monodromy operator of the corresponding Heun equation has eigenvalue $e^{2\pi i b}$. It also gives the description of those values λ, μ, n for which the monodromy is parabolic: has multiple eigenvalue. We consider the rotation number ρ of the dynamical system on two-torus as a function

*Permanent address: Steklov Mathematical Institute, 8, Gubkina street, 119991, Moscow, Russia. Email: buchstab@mi.ras.ru

†All-Russian Scientific Research Institute for Physical and Radio-Technical Measurements (VNIIFTRI),

‡Supported by part by RFBR grant 14-01-00506.

§CNRS, France (UMR 5669 (UMPA, ENS de Lyon) and UMI 2615 (Lab. J.-V.Poncelet)), Lyon, France. Email: aglutsyu@ens-lyon.fr

¶National Research University Higher School of Economics (HSE), Moscow, Russia

||Supported by part by RFBR grants 13-01-00969-a, 16-01-00748, 16-01-00766 and ANR grant ANR-13-JS01-0010.

of parameters restricted to a surface $\lambda + \mu^2 = \text{const}$. The phase-lock areas are its level sets having non-empty interiors. For general families of dynamical systems the problem to describe the boundaries of the phase-lock areas is known to be very complicated. In the present paper we include the results in this direction that were obtained by methods of complex variables. In our case the phase-lock areas exist only for integer rotation numbers (quantization effect), and the complement to them is an open set. On their complement the rotation number function is an analytic submersion that induces its fibration by analytic curves. The above-mentioned result on parabolic monodromy implies the explicit description of the union of boundaries of the phase-lock areas as solutions of an explicit transcendental functional equation. For every $\theta \notin \mathbb{Z}$ we get a description of the set $\{\rho \equiv \pm\theta(\text{mod } 2\mathbb{Z})\}$.

Contents

1	Introduction: statement of results, sketch of proof and plan of the paper	3
1.1	Main result: existence and uniqueness of monodromy eigenfunctions of non-homogeneous double confluent Heun equations	4
1.2	Solutions of three-term recurrence relations	6
1.3	Historical remarks, applications and plan of the paper	9
1.4	A sketch of proof of Theorem 1.8.	12
2	Proof of Theorem 1.8 and its addendum	14
3	Explicit formulas for solutions and the coefficients $d_{j\pm}$	17
3.1	Solution of recurrence relation via infinite matrix product: a general method	17
3.2	Forward solutions from Theorems 1.1 and 1.10	21
3.3	Backward solutions	23
3.4	Theorem 1.1: formulas for $d_{0\pm}$ and $d_{1\pm}$	26
3.5	End of proof of Theorems 1.1 and 1.10: holomorphic dependence of solutions on the parameters	26
4	Application: monodromy eigenvalues	26
4.1	Nonresonant case: $b, b + n \notin \mathbb{Z}$	28
4.2	Resonant case: at least one of the numbers $b, b + n$ is integer	29
4.3	Double resonant subcase: $n, b \in \mathbb{Z}$	33

5 Applications to phase-lock areas in the model of Josephson effect	38
5.1 Phase-lock areas in Josephson effect: brief geometric description and plan of the section	38
5.2 Symmetries and the portraits of the phase-lock areas	40
5.3 Transformation to double confluent Heun equations. The boundary points of the phase-lock areas corresponding to entire and polynomial solutions of the Heun equation	40
5.4 Equation on non-integer level sets of rotation number	47
5.5 Description of boundaries of phase-lock areas	49
5.6 Conjectures on geometry of phase-lock areas	54
5.7 Description of boundaries of phase-lock areas near adjacencies. Relation to Conjecture 5.28	59
5.8 Asymptotic behavior of phase-lock areas for small ω	61
6 Acknowledgements	61

1 Introduction: statement of results, sketch of proof and plan of the paper

We study the problem to find those solutions of *non-homogeneous* double-confluent Heun equations that are monodromy eigenfunctions. Our study is motivated by applications to nonlinear equations modeling the Josephson effect in superconductivity. The main results, the existence and uniqueness of the above solutions (Theorems 1.1 and 1.3) are stated in Subsection 1.1. Applications to monodromy eigenfunctions and eigenvalues of homogeneous double confluent Heun equations and to nonlinear equations modeling Josephson effect are presented in Subsections 1.1 and 1.3, Sections 4 and 5.

Each eigenfunction is the product of a monomial z^b and a function $f(z)$ holomorphic on \mathbb{C}^* . The Heun equation is equivalent to recurrence relations on the Laurent coefficients of the function f . The proofs of the above-mentioned results are based on studying the latter recurrence relations. We prove existence and uniqueness Theorem 1.8 for converging solutions of a more general class of recurrence relations (stated in Subsection 1.2 and proved in Section 2). Its proof is based on ideas from hyperbolic dynamics and a fixed point argument for appropriate contracting mapping.

1.1 Main result: existence and uniqueness of monodromy eigenfunctions of non-homogeneous double confluent Heun equations

We consider the family of double confluent Heun equations

$$\mathcal{L}E = z^2 E'' + (nz + \mu(1 - z^2))E' + (\lambda - \mu n z)E = 0; \quad n, \lambda, \mu \in \mathbb{C}, \mu \neq 0. \quad (1.1)$$

They are well-known linear differential equations, see [27, formula (3.1.15)] that have singular points only at zero and infinity, both of them are irregular. Our goal is to study existence of the eigenfunctions of their monodromy operators (see [2, chapter 7, subsection 3.2] and the definition in Subsection 4.1) with a given eigenvalue $e^{2\pi i b}$, $b \in \mathbb{C}$: the latter functions are solutions of equation (1.1) having the form

$$E(z) = z^b f(z), \quad f(z) \text{ is holomorphic on } \mathbb{C}^*. \quad (1.2)$$

The converging Laurent series of the function $f(z)$ is split into two parts, $f(z) = f_+(z) + f_-(z^{-1})$, where f_{\pm} are holomorphic functions on \mathbb{C} and $f_+(0) = 0$. These functions satisfy non-homogeneous equations of the type

$$z^{-b} \mathcal{L}(z^b f_{\pm}(z^{\pm 1})) = d_{0\pm} + d_{1\pm} z \quad (1.3)$$

One of our main results is the following.

Theorem 1.1 *For every $(n, \lambda, \mu, b) \in U$,*

$$U = \{(n, \lambda, \mu, b) \in \mathbb{C}^4 \mid \mu \neq 0, b, b + n \notin \mathbb{Z}\}, \quad (1.4)$$

there exist holomorphic functions $f_{\pm}(z)$ on a neighborhood of zero, $f_+(0) = 0$ such that the functions $f_{\pm}(z^{\pm 1})$ satisfy equations (1.3) for appropriate $d_{0\pm}(n, \lambda, \mu, b)$, $d_{1\pm}(n, \lambda, \mu, b)$. The functions f_{\pm} are unique up to constant factors (depending on the parameters), and they are entire functions: holomorphic on \mathbb{C} . For every sign index \pm the corresponding vector $(d_{0\pm}, d_{1\pm})$ is uniquely defined up to scalar factor depending on parameters. The above constant factors can be chosen so that both f_{\pm} and $d_{j\pm}$ depend holomorphically on $(n, \lambda, \mu, b) \in U$ and $f_{\pm}(z)$ are real-valued in $z \in \mathbb{R}$ for real parameter values.

Corollary 1.2 *Let $(n, \lambda, \mu, b) \in U$. The corresponding equation (1.1) has a monodromy eigenfunction with eigenvalue $e^{2\pi i b}$, $b \in \mathbb{C}$, if and only if the corresponding vectors $d_{\pm} = (d_{0\pm}, d_{1\pm})$ are proportional:*

$$d_{0+} d_{1-} - d_{0-} d_{1+} = 0. \quad (1.5)$$

Theorem 1.1 will be proved in the next subsection and Section 2. Corollary 1.2 will be proved in the next subsection. The explicit formulas for the functions f_{\pm} and $d_{j\pm}$ will be given in Section 3. Equivalent versions of equation (1.5) as explicit functional equations in parameters obtained in a more direct way will be presented in Section 4.

Theorem 1.3 *For every $n \in \mathbb{C} \setminus \mathbb{Z}_{\leq 0}$ and $(\lambda, \mu) \in \mathbb{C}^2$, $\mu \neq 0$ there exists a unique function $E(z) \not\equiv 0$ (up to constant factor) holomorphic on a neighborhood of zero such that $\mathcal{L}E = c$, where c is independent on z . The function E is entire and can be normalized so that $c = \xi_{n-1}(\lambda, \mu)$ depends holomorphically on (n, λ, μ) and E also depends holomorphically on (n, λ, μ) .*

Theorem 1.3 will be proved in the next subsection.

Remark 1.4 Theorem 1.3 is closely related to the question of the existence of a solution holomorphic at 0 of equation (1.1) (such a solution is automatically entire, i.e., holomorphic on \mathbb{C}). This question was studied by V.M.Buchstaber and S.I.Tertychnyi in [10]. The existence of a solution E from Theorem 1.3 and explicit expressions for E and the corresponding function $\xi_{n-1}(\lambda, \mu)$ (analytic in $(\lambda, \mu) \in \mathbb{C}^2$) were given in [10, pp. 337–338]. (This was done for $n \in \mathbb{N}$, but these results remain valid for all $n \in \mathbb{C} \setminus \mathbb{Z}_{\leq 0}$.) The existence result implies that if $\xi_{n-1}(\lambda, \mu) = 0$, then the homogeneous equation (1.1), i.e., $\mathcal{L}E = 0$ has a solution holomorphic on \mathbb{C} . A conjecture stated by V.M.Buchstaber and S.I.Tertychnyi in loc. cit. (under the additional assumption that $n \in \mathbb{N}$, which, in fact, can be omitted) said that the converse is true: if equation (1.1) has a holomorphic solution at 0, then $\xi_{n-1}(\lambda, \mu) = 0$. This conjecture was studied for $n \in \mathbb{N}$ in loc. cit. and [11], where it was reduced to a series of conjectures on polynomial solutions of auxiliary Heun equations and non-vanishing of determinants of modified Bessel functions of the first kind. All these conjectures were solved in [13]. As the next corollary shows, Theorem 1.3 implies the conjecture of Buchstaber and Tertychnyi immediately for all $n \in \mathbb{C} \setminus \mathbb{Z}_{\leq 0}$.

Remark 1.5 The method used in [10, 11, 13] was to consider a “conjugated” family of Heun equations, for which equations having polynomial solutions were described by an explicit algebraic equation on parameters in [9]. The proof of the above-mentioned Buchstaber–Tertychnyi conjecture was obtained in [13] from a solution of their problem about polynomial solutions. The method of the present paper allows to prove the conjecture directly, without using the conjugated family and polynomial solutions. A possibility to prove the conjecture without using the condition of non-vanishing

of the determinants of modified Bessel functions was mentioned in [10] at the place, where the conjecture was stated. We realize this possibility in the present paper. As is explained in [13], positivity of Bessel determinants proved there is a result interesting itself.

Corollary 1.6 (cf. [13, theorem 3.5]) *For every $n \in \mathbb{C} \setminus \mathbb{Z}_{\leq 0}$ and $\mu \neq 0$ equation (1.1) has an entire solution, if and only if $\xi_{n-1}(\lambda, \mu) = 0$, where $\xi_{n-1}(\lambda, \mu)$ is the function from Theorem 1.3 introduced in [10, formula (31), p. 337], see also formula (4.9) in Subsection 4.3 below.*

Proof Let $\xi_{n-1}(\lambda, \mu) = 0$. Then the function E from Theorem 1.3 is an entire solution of equation (1.1): $\mathcal{L}E = 0$. Conversely, let equation (1.1) have a solution E holomorphic at 0. If $\xi_{n-1}(\lambda, \mu) \neq 0$, then there exists a holomorphic function \hat{E} on a neighborhood of zero satisfying the equation $\mathcal{L}\hat{E} = \xi_{n-1}(\lambda, \mu) \neq 0$, by Theorem 1.3. This together with the uniqueness statement of Theorem 1.3 implies that $\hat{E} = E$ up to constant factor, hence $\mathcal{L}\hat{E} = 0$. The contradiction thus obtained proves the corollary. \square

1.2 Solutions of three-term recurrence relations

Let us look for *formal* solutions of equation (1.1) of type (1.2). Equation (1.1) is equivalent to the recurrence relations

$$((k+b)(k+b+n-1)+\lambda)a_k - \mu(k+b+n-1)a_{k-1} + \mu(k+b+1)a_{k+1} = 0, \quad (1.6)$$

which can be written in the matrix form

$$\begin{pmatrix} a_k \\ a_{k+1} \end{pmatrix} = A_k \begin{pmatrix} a_{k-1} \\ a_k \end{pmatrix}, \quad A_k = \frac{k+b+n-1}{k+b+1} \begin{pmatrix} 0 & \frac{k+b+1}{k+b+n-1} \\ 1 & -\frac{\lambda+(k+b)(k+b+n-1)}{\mu(k+b+n-1)} \end{pmatrix}. \quad (1.7)$$

Remark 1.7 A function $f_+(z) = \sum_{k \geq 1} a_k z^k$ satisfies equation (1.3) for some d_{j_+} , if and only if its Taylor coefficients a_k satisfy (1.6), or equivalently, (1.7) for $k \geq 2$. Similarly, a function $f_-(z^{-1}) = \sum_{k \leq 0} a_k z^k$ satisfies (1.3), if and only if its coefficients satisfy (1.6) for $k \leq -1$.

Proof of Corollary 1.2. Let $E(z) = z^b \sum_{k \in \mathbb{Z}} a_k z^k$ be a solution of equation (1.1) having type (1.2). Then

$$E(z) = z^b (f_+(z) + f_-(z^{-1})), \quad f_+(z) = \sum_{k \geq 1} a_k z^k, \quad f_-(z) = \sum_{k \geq 0} a_{-k} z^k. \quad (1.8)$$

The coefficients a_k satisfy (1.6) for all k . This together with the above remark implies that the functions $f_{\pm}(z^{\pm 1})$ satisfy (1.3). The corresponding expressions $d_{\pm} = d_{0\pm} + d_{1\pm}z$ should cancel out, since E is a solution of the homogeneous equation. This implies (1.5). Conversely, let $f_{\pm}(z^{\pm 1})$ be solutions of (1.3), and let (1.5) hold: that is, the vectors d_+ and d_- are proportional. Then we can normalize the latter vectors, and hence, the corresponding solutions by constant factors (not both vanishing simultaneously) so that $d_+ + d_- = 0$. Then the function E given by (1.8) is a solution of equation (1.1). \square

As it is shown below, Theorem 1.1 is implied by the following general theorem

Theorem 1.8 *Consider recurrence relations*

$$f_k a_{k-1} + g_k a_k + h_k a_{k+1} = 0 \quad (1.9)$$

in sequence a_k , $k \in \mathbb{Z}_{\geq 0}$, where sequences $g_k, f_k, h_k \in \mathbb{C}$ satisfy the following conditions:

$$f_k, h_k \neq 0, \text{ for every } k, \quad (1.10)$$

$$f_k, h_k = o(g_k), \text{ as } k \rightarrow \infty. \quad (1.11)$$

Then there exists a unique series $\sum_{k=0}^{+\infty} a_k z^k \neq 0$ (up to constant factor) with a_k satisfying (1.9) for $k \geq 1$ and having non-zero convergence radius. Moreover, this series converges on all of \mathbb{C} .

Addendum to Theorem 1.8. *Let in the conditions of Theorem 1.8 the coefficients f_k, g_k, h_k depend holomorphically on parameters that represent a point of a finite-dimensional complex manifold. Let asymptotics (1.11) hold uniformly on compact subsets in the parameter manifold. Then the function $\sum_{k=0}^{+\infty} a_k z^k$ can be normalized to depend meromorphically on the parameters. In the case, when the parameter manifold is Stein and contractible¹, this function can be normalized to be holomorphic in the parameters.*

Theorem 1.8 and its addendum will be proved in the next section.

¹The condition of contractibility may be weakened to the condition of vanishing of the second cohomology group with integer coefficients. The latter condition implies in particular that the quotient of the fundamental group by its commutant has trivial torsion. Vanishing of the second cohomology together with Stein property is needed to guarantee that each analytic hypersurface in the parameter manifold is the zero locus of a holomorphic function [14, chapter VII, section B, proposition 13].

Remark 1.9 In the series $\sum_k a_k z^k$ from Theorem 1.8 for every $k \geq 0$ the two neighbor coefficients a_k, a_{k+1} do not vanish simultaneously: hence, they present a point $(a_k : a_{k+1}) \in \mathbb{CP}^1$. Indeed, each pair of neighbor coefficients (a_k, a_{k+1}) determines a unique sequence satisfying (1.9). This follows from the fact that for every $k \geq 1$ the coefficient $a_{k\pm 1}$ is expressed as a linear combination of $a_{k\mp 1}$ and a_k by (1.9), since $f_k, h_k \neq 0$. Hence, if some two neighbor coefficients a_{k-1}, a_k vanish, then all the coefficients vanish, and the series is zero, – a contradiction.

Theorem 1.10 *Let $b, n \in \mathbb{C}$, Then for every $k_0 \in \mathbb{Z}$ such that*

$$k + b + n - 1, k + b + 1 \neq 0 \text{ for every } k > k_0, \quad (1.12)$$

*for every $\lambda, \mu \in \mathbb{C}$, $\mu \neq 0$ there exists and unique nonzero one-sided series $\sum_{k \geq k_0} a_k z^k$ (up to constant factor) converging on some punctured disk centered at 0 that satisfies recurrence relations (1.6) (or equivalently, (1.7)) for $k > k_0$. (In what follows this solution of relations (1.6) is called the **forward solution**.) Similarly, for every $k_0 \in \mathbb{Z}$ such that*

$$k + b + n - 1, k + b + 1 \neq 0 \text{ for every } k < k_0 \quad (1.13)$$

*there exists and unique one-sided series $\sum_{k \leq k_0} a_k z^k$ (up to multiplicative constant) that satisfies recurrence relations (1.6) for $k < k_0$ and converges outside some disk centered at 0. In what follows this solution of relations (1.6) is called the **backward solution**.) Both series converge on the whole punctured complex line \mathbb{C}^* . They can be normalized to depend holomorphically on those parameters (n, λ, μ, b) for which inequality (1.12) (respectively, (1.13)) holds for the given number k_0 .*

Example 1.11 Let in the conditions of Theorem 1.10 one have $b, n + b \notin \mathbb{Z}$ (cf. (1.4)). Then its statements hold for all $k_0 \in \mathbb{Z}$, since inequalities (1.12) hold for all $k \in \mathbb{Z}$. Otherwise, if either $b \in \mathbb{Z}$, or $b + n \in \mathbb{Z}$, then the statements of Theorem 1.10

$$\text{hold for } k > k_0 \text{ whenever } k_0 \geq \max\{m \in \{-1 - b, 1 - b - n\} \mid m \in \mathbb{Z}\} \quad (1.14)$$

$$\text{hold for } k < k_0 \text{ whenever } k_0 \leq \min\{m \in \{-1 - b, 1 - b - n\} \mid m \in \mathbb{Z}\} \quad (1.15)$$

Theorem 1.10 together with Remark 1.7 and the first statement of Example 1.11 imply Theorem 1.1.

Proof of Theorems 1.10 and 1.1 (existence and uniqueness of solutions). The coefficients

$$f_k = -\mu(k + b + n - 1), \quad g_k = (k + b)(k + b + n - 1) + \lambda, \quad h_k = \mu(k + b + 1)$$

of recurrence relations (1.6) satisfy the conditions of Theorem 1.8 for $k > k_0$ ($k < k_0$). Indeed, the asymptotics (1.11) is obvious. Inequalities $f_k, h_k \neq 0$ follow from (1.12) (respectively, (1.13)). This together with Theorem 1.8 implies the statement of Theorem 1.10, and hence, Theorem 1.1 on existence and uniqueness of solutions. The local holomorphicity in the parameters follows from the addendum to Theorem 1.8. The global holomorphicity will be proved later on, in Subsection 3.5. \square

Proof of Theorem 1.3. Let $b = 0$, $n \in \mathbb{C} \setminus \mathbb{Z}_{\leq 0}$. Then inequalities (1.12) hold for $k > k_0 = 0$. Therefore, there exists a unique series $E(z) = \sum_{k=0}^{+\infty} a_k z^k$ converging on a neighborhood of the origin, whose coefficients satisfy (1.6) for $k \geq 1$, and it converges on all of \mathbb{C} (Theorem 1.10). The system of relations (1.6) for $k \geq 1$ is equivalent to the statement that $\mathcal{L}E = \text{const}$. This proves Theorem 1.3. Holomorphicity on the parameters follows from the analogous statement of Theorem 1.10. \square

1.3 Historical remarks, applications and plan of the paper

Our results are motivated by applications to the family

$$\frac{d\phi}{dt} = -\sin \phi + B + A \cos \omega t, \quad A, \omega > 0, \quad B \geq 0. \quad (1.16)$$

of nonlinear equations, which arises in several models in physics, mechanics and geometry: in a model of the Josephson junction in superconductivity (our main motivation), see [21, 28, 15, 3, 25]; in planimeters, see [16, 17]. Here ω is a fixed constant, and (B, A) are the parameters. Set

$$\tau = \omega t, \quad l = \frac{B}{\omega}, \quad \mu = \frac{A}{2\omega}.$$

The variable change $t \mapsto \tau$ transforms (1.16) to a non-autonomous ordinary differential equation on the two-torus $\mathbb{T}^2 = S^1 \times S^1$ with coordinates $(\phi, \tau) \in \mathbb{R}^2 / 2\pi\mathbb{Z}^2$:

$$\dot{\phi} = \frac{d\phi}{d\tau} = -\frac{\sin \phi}{\omega} + l + 2\mu \cos \tau. \quad (1.17)$$

The graphs of its solutions are the orbits of the vector field

$$\begin{cases} \dot{\phi} = -\frac{\sin \phi}{\omega} + l + 2\mu \cos \tau \\ \dot{\tau} = 1 \end{cases} \quad (1.18)$$

on \mathbb{T}^2 . The *rotation number* of its flow, see [1, p. 104], is a function $\rho(B, A) = \rho(B, A; \omega)$ of the parameters of the vector field. It is given by the formula

$$\rho(B, A; \omega) = \lim_{k \rightarrow +\infty} \frac{\phi(2\pi k)}{k},$$

where $\phi(\tau)$ is an arbitrary solution of equation (1.17).

The *phase-lock areas* are the level subsets of the rotation number in the (B, A) -plane with non-empty interior. They have been studied by V.M.Buchstaber, O.V.Karpov, S.I.Tertychnyi et al, see [4]–[13], [18] and references therein. Each phase-lock area is an infinite chain of adjacent domains separated by points called the *adjacency points* (or briefly, *adjacencies*). The description of their coordinates as solutions of analytic functional equations was conjecturally stated by V.M.Bushstaber and S.I.Tertychnyi in [10] and proved by the authors of the present paper in [13]. Namely, the family of non-linear equations was reduced in [9, 29] to the two following families of second order linear differential equations of double confluent Heun type: equation (1.1) with

$$n = l + 1, \quad \lambda = \frac{1}{4\omega^2} - \mu^2$$

and the equation

$$\mathcal{L}E = z^2 E'' + ((-l + 1)z + \mu(1 - z^2))E' + (\lambda + \mu(l - 1)z)E = 0. \quad (1.19)$$

Equation (1.19) is obtained from equation (1.1) via the substitution $l = 1 - n$.

Remark 1.12 Heun equations (1.1) and (1.19) corresponding to the family (1.18) of dynamical systems on torus are those corresponding to real parameters n, ω, μ , and thus, real λ . In the present paper we are studying general Heun equation (1.1) with arbitrary complex parameters n, λ, μ .

It was shown in [18] that $l = \frac{B}{\omega} \in \mathbb{Z}$ at all the adjacencies. In the case, when $l \geq 0$, Buchstaber and Tertychnyi have shown that the adjacencies correspond exactly to those parameter values, for which l is integer and equation (1.1) has a non-trivial holomorphic solution at 0 (which is automatically an entire solution: holomorphic on \mathbb{C}); see the statement in [10, p.332, paragraph 2] and the proof in [13, theorem 3.3 and subsection 3.2]. They have explicitly constructed a family of holomorphic solutions for parameters satisfying an explicit functional equation $\xi_l(\lambda, \mu) = 0$, see Corollary 1.6. They have conjectured that the latter functional equation describes the adjacencies completely. They have reduced this conjecture to another one

saying that if equation (1.19) has a polynomial solution (which may happen only for $l \in \mathbb{N}$), then equation (1.1) does not have an entire solution. Later they have shown that the second conjecture follows from the third one saying that appropriate determinants formed by modified Bessel functions of the first type do not vanish on the positive semiaxis. This third conjecture together with the two previous conjectures were proved in [13]. The statement of the above-mentioned conjecture of Buchstaber and Tertychnyi on functional equation describing the adjacencies follows from Corollary 1.6 and their correspondence to entire solutions of Heun equations.

V.M.Buchstaber and S.I.Tertychnyi have constructed symmetries of double confluent Heun equation (1.1) [10, 12]. The symmetry $\# : E(z) \mapsto 2\omega z^{-l-1}(E'(z^{-1}) - \mu E(z^{-1}))$, which is an involution of its solution space, was constructed in [30, equations (32), (34)]. It corresponds to the symmetry $(\phi, t) \mapsto (\pi - \phi, -t)$ of the nonlinear equation (1.16); the latter symmetry was found in [22]. In [12] they have found new nontrivial symmetries in the case, when $l \in \mathbb{Z}$ and equation (1.19) does not have polynomial solutions.

Convention 1.13 Everywhere in the paper by *formal* solution $(a_k)_{k \geq k_0}$ (or $(a_k)_{k \leq k_0}$) of linear recurrence relation $f_k a_{k-1} + g_k a_k + h_k a_{k+1} = 0$ we mean a (one- or two-sided) sequence of complex numbers a_k satisfying the relation for all $k > k_0$ (respectively, $k < k_0$). (Here one may have two-sided infinite sequences.) If in addition, the power series $\sum_k a_k z^k$ converges on some annulus centered at 0 (for all the relations under consideration, this would automatically imply convergence on all of \mathbb{C}^*) then the formal solution under question is called simply *a solution*: the adjective “converging” is omitted for simplicity.

In Section 3 we write down explicit formulas for solutions of recurrence relations (1.6) using the proof of Theorem 1.8. Then in Section 4 we deduce explicit functional equations satisfied by monodromy eigenvalues of double confluent Heun equations (explicit versions of Corollary 1.2).

In Section 5 we apply results of Sections 3 and 4 to phase-lock areas in the model of Josephson effect.

Remark 1.14 The problem to describe the boundaries of the phase-lock areas for the considered system was studied in [9, 10, 13]. Special points of the boundaries (adjacencies and points corresponding to equations (1.19) with polynomial solutions) were described in [10] and [9] respectively. In the present paper the union of boundaries is described by an explicit transcendental analytic equation (Corollary 5.16 in Subsection 5.4). It is known that

the ratio of the monodromy eigenvalues of the corresponding equation (1.1) equals $e^{\pm 2\pi i \rho(A,B)}$ and their product equals $e^{-2\pi i l}$. The union of boundaries coincides with the set where the monodromy has multiple eigenvalue and is described by the condition that the monodromy of equation (1.1) has eigenvalue $\pm e^{-\pi i l}$. We get a similar description of non-integer level curves of the rotation number function. Namely, for $\theta \notin \mathbb{Z}$ the above relation between monodromy eigenvalues and the rotation number together with the results of Sections 3, 4 imply an explicit functional equation satisfied by the set $\{\rho \equiv \pm \theta \pmod{2\mathbb{Z}}\}$ (Theorem 5.10 in Subsection 5.3).

Open problems on phase-lock areas and possible approaches to some of them using the above description of boundaries are discussed in Subsections 5.5–5.8.

The following new result will be also proved in Section 5 using results of Section 4.

Theorem 1.15 *Let $\omega > 0$, $(B, A) \in \mathbb{R}^2$, $B, A > 0$, $l = \frac{B}{\omega}$, $\mu = \frac{A}{2\omega}$, $\lambda = \frac{1}{4\omega^2} - \mu^2$, $\rho = \rho(B, A)$. The double confluent Heun equation (1.19) corresponding to the above λ , μ and l has a polynomial solution, if and only if $l, \rho \in \mathbb{Z}$, $\rho \equiv l \pmod{2\mathbb{Z}}$, $0 \leq \rho \leq l$, the point (B, A) lies in the boundary of a phase-lock area and is not an adjacency. In other terms, the points $(B, A) \in \mathbb{R}_+^2$ corresponding to equations (1.19) with polynomial solutions lie in boundaries of phase-lock areas and are exactly their intersection points with the lines $l = \frac{B}{\omega} \equiv \rho \pmod{2\mathbb{Z}}$, $0 \leq \rho \leq l$ that are not adjacencies.*

Remark 1.16 V.M.Buchstaber and S.I.Tertychnyi have shown in [9] that if a point $(B, A) \in \mathbb{R}_+^2$ corresponds to equation (1.19) with a polynomial solution, then l, ρ are integers, $0 \leq \rho \leq l$ and $\rho \equiv l \pmod{2\mathbb{Z}}$.

1.4 A sketch of proof of Theorem 1.8.

For every initial condition (a_0, a_1) there exists a unique sequence $(a_k)_{k \geq 0}$ satisfying recurrence relations (1.9), by Remark 1.9. But in general, the series $\sum_k a_k z^k$ may diverge. We have to prove that it converges for appropriately chosen unknown initial condition. To do this, we use the following trick: we run the recursion in the opposite direction, “from infinity to zero”. That is, take a big k and a given “final condition” $q_k = (a_k, a_{k+1})$. Then the inverse recursion gives all $a_j = a_j(q_k)$, $0 \leq j \leq k$. It appears that the initial condition (a_0, a_1) we are looking for can be obtained as a limit of the initial conditions $(a_0(q_k), a_1(q_k))$ obtained by the above inverse recursion (after rescaling), as $k \rightarrow \infty$. The latter holds for appropriate choice of the

final vector q_k : it should be appropriately normalized by scalar factor and its projectivization $[q_k] = (a_k : a_{k+1}) \in \mathbb{CP}^1$ should avoid some small explicitly specified “bad region”, which contracts to the point $(0 : 1)$, as $k \rightarrow \infty$.

The projectivized inverse recursion

$$P_k : \mathbb{CP}^1 \rightarrow \mathbb{CP}^1 : [q_k] = (a_k : a_{k+1}) \mapsto [q_{k-1}] = (a_{k-1} : a_k)$$

defined by (1.9) can be considered as the dynamical system

$$T : (\mathbb{N}_{\geq 2} \cup \{\infty\}) \times \mathbb{CP}^1 \rightarrow (\mathbb{N} \cup \{\infty\}) \times \mathbb{CP}^1, \quad \mathbb{N}_{\geq 2} = \mathbb{N} \cap [2, +\infty),$$

where for every $x \in \mathbb{CP}^1$ and $k \in \mathbb{N}_{\geq 2}$ one has

$$T : (k, x) \mapsto (k-1, P_k(x)); \quad T : \infty \times \mathbb{CP}^1 \mapsto \infty \times (1 : 0).$$

It appears that for every k large enough P_k has a strongly attracting fixed point tending to $(1 : 0)$ and a strongly repelling fixed point tending to $(0 : 1)$, as $k \rightarrow \infty$. This together with the ideas from basic theory of hyperbolic dynamics implies that the fixed point $p_\infty = \infty \times (1 : 0)$ of the transformation T should have a unique unstable manifold: an invariant sequence $(k, [q_k])$ converging to p_∞ . We show that a solution (a_k) of recurrence relations (1.9) gives a converging Taylor series $\sum_k a_k z^k$ on some neighborhood of zero, if and only if $(a_k : a_{k+1}) = [q_k]$ for all k , and then the series converge everywhere. This will prove Theorem 1.8.

The existence and uniqueness of the above-mentioned unstable manifold is implied by the following discrete analogue of the classical Hadamard–Perron Theorem on the unstable manifold of a dynamical system at a hyperbolic fixed point.

Theorem 1.17 *Let E_1, E_2, \dots be a sequence of complete metric spaces with uniformly bounded diameters. For brevity, the distance on each of them will be denoted d . Let $P_k : E_k \rightarrow E_{k-1}$ be a sequence of uniformly contracting mappings: there exists a λ , $0 < \lambda < 1$ such that $d(P_k(x), P_k(y)) < \lambda d(x, y)$ for every $x, y \in E_k$ and $k \geq 2$. Then there exists a unique sequence of points $x_k \in E_k$ such that $x_{k-1} = P_k(x_k)$ for all $k \geq 2$. One has*

$$x_{k-1} = \lim_{m \rightarrow \infty} P_k \circ \dots \circ P_m(x), \tag{1.20}$$

and the convergence is uniform in x : for every $\varepsilon > 0$ there exists some $l \in \mathbb{N}$ such that for every $m \geq l$ and every $x \in E_m$ one has $d(P_k \circ \dots \circ P_m(x), x_{k-1}) < \varepsilon$. If in addition the spaces E_k coincide with one and the

same space E and the fixed points of the mappings P_k tend to some $x_\infty \in E$, as $k \rightarrow \infty$, then

$$\lim_{k \rightarrow \infty} x_k = x_\infty. \quad (1.21)$$

Proof The proof repeats the argument of the classical proof of Hadamard–Perron Theorem. Consider the space S of all sequences $X = (x_k)_{k \in \mathbb{N}}$, $x_k \in E_k$, equipped with the distance

$$D(X, Y) = \sup_k d(x_k, y_k).$$

The transformation

$$T : S \rightarrow S, (x_1, x_2, \dots) \mapsto (P_2(x_2), P_3(x_3), \dots)$$

is a contraction. Therefore, it has a unique fixed point, which is exactly the sequence we are looking for. The second statement of the theorem on the uniform convergence of compositions to x_{k-1} follows from the uniform convergence of iterations of the contracting map T to its fixed point. In the last condition of Theorem 1.17 statement (1.21) follows by the above fixed point argument in the subspace in S of the sequences (x_k) tending to x_∞ , as $k \rightarrow \infty$: this is a complete T -invariant metric subspace in S , and hence, T has a fixed point there, which coincides with the previous sequence (x_k) by uniqueness. Theorem 1.17 is proved. \square

2 Proof of Theorem 1.8 and its addendum

Recurrence relations (1.9) can be written in the matrix form

$$\begin{pmatrix} a_k \\ a_{k+1} \end{pmatrix} = \Lambda_k \begin{pmatrix} a_{k-1} \\ a_k \end{pmatrix}, \quad \Lambda_k = h_k^{-1} \begin{pmatrix} 0 & h_k \\ -f_k & -g_k \end{pmatrix}. \quad (2.1)$$

Consider the inverse matrices

$$\Lambda_k^{-1} = \begin{pmatrix} -\frac{g_k}{f_k} & -\frac{h_k}{f_k} \\ 1 & 0 \end{pmatrix} \quad (2.2)$$

and their projectivizations $P_k : \mathbb{CP}^1 \rightarrow \mathbb{CP}^1$ acting on the projective line $\mathbb{CP}^1 = \overline{\mathbb{C}}$ with homogeneous coordinates $(z_1 : z_2)$. In the affine chart $\{z_1 \neq 0\} \subset \mathbb{CP}^1$ with the coordinate $w = \frac{z_2}{z_1}$ for every $C > 0$ we denote

$$D_C = \{|w| < C\} \subset \mathbb{C} \subset \overline{\mathbb{C}}.$$

Proposition 2.1 *The transformations P_k converge to the constant mapping $\mathbb{CP}^1 \mapsto \{w = 0\}$ uniformly on every closed disk \overline{D}_C , $C > 0$, as $k \rightarrow \infty$. Their inverses converge to the constant mapping $\mathbb{CP}^1 \mapsto \{w = \infty\}$ uniformly on the complement of every disk D_C .*

Proof The image of a vector $(1, w)$ with $|w| \leq C$ under the matrix Λ_k^{-1} is the vector

$$(u_k(w), v_k(w)) = -\frac{g_k}{f_k} \left(1 + \frac{h_k}{g_k} w, -\frac{f_k}{g_k} \right).$$

Recall that $\frac{h_k}{g_k}, \frac{f_k}{g_k} \rightarrow 0$, see (1.11), hence, $g_k \neq 0$ for all k large enough. The latter asymptotics and formula together imply that $\frac{v_k(w)}{u_k(w)} \rightarrow 0$ uniformly on \overline{D}_C and prove the first statement of the proposition. Let us prove its second statement. For every fixed $C > 0$ and every k large enough (dependently on C) one has $P_k^{-1}(\mathbb{CP}^1 \setminus D_C) \subset \mathbb{CP}^1 \setminus D_C$, by the first statement of the proposition. The image of a vector $(1, w)$ under the matrix Λ_k is $(s_k(w), t_k(w)) = (w, -\frac{g_k w + f_k}{h_k})$. This together with (1.11) implies that $\frac{s_k(w)}{t_k(w)} \rightarrow 0$ uniformly on $|w| \geq C$, as $k \rightarrow \infty$; or equivalently, $P_k \rightarrow \infty$ uniformly on $\mathbb{CP}^1 \setminus D_C$. The proposition is proved. \square

Proof of Theorem 1.8. Let $C > 1$, E_C denote the closed disk $\overline{D}_C \subset \mathbb{CP}^1$ equipped with the Euclidean distance. There exist a λ , $0 < \lambda < 1$ and a $N = N(\lambda, C) \in \mathbb{N}$ such that for every $k > N$ one has $P_k(E_C) \subset E_C$ and the mapping $P_k : E_C \rightarrow E_C$ is a λ -contraction: $|P_k(x) - P_k(y)| < \lambda|x - y|$. This follows from the first statement of the proposition and the fact that uniform convergence of holomorphic functions implies uniform convergence of their derivatives on compact sets (Cauchy bound): here uniform convergence of the mappings P_k to the constant mapping on $D_{C'}$ with $C' > C$ implies uniform convergence of their derivatives to zero on \overline{D}_C . The fixed point of the mapping $P_k|_{E_C}$ tends to 0, as $k \rightarrow \infty$, by uniform convergence (Proposition 2.1). This together with Theorem 1.17 implies that there exists a unique sequence $(x_k)_{k \geq N}$ such that $P_k(x_k) = x_{k-1}$ for all $k > N$ and $|x_k| \leq C$. The latter sequence corresponds to a unique sequence $(a_k)_{k \geq N}$ (up to multiplicative constant) such that $x_k = (a_k : a_{k+1})$; one has $|w(x_k)| = |\frac{a_{k+1}}{a_k}| \leq C$ for every $k \geq N$. The sequence (a_k) satisfies relations (1.9) for $k > N$, which are equivalent to the equalities $P_k(x_k) = x_{k-1}$. It extends to a unique sequence $(a_k)_{k \geq 0}$ satisfying (1.9) for $k \geq 1$, as in Remark 1.9. In addition, $x_k \rightarrow 0$, i.e., $\frac{a_{k+1}}{a_k} \rightarrow 0$, as $k \rightarrow \infty$, by (1.21) and since the attracting fixed points of the mappings P_k converge to 0, by Proposition 2.1. Therefore, the series $\sum_{k \geq 0} a_k z^k$ converges on the whole complex line \mathbb{C} . The existence is proved. Now let us prove the uniqueness. Let, by contradiction, there exist

a series $\sum a_k z^k$ satisfying relations (1.9), having a positive convergence radius and not coinciding with the one constructed above. Then there exists a $k > N$ such that $|\frac{a_{k+1}}{a_k}| > C$, i.e., $x_k \notin \overline{D}_C$. For every $l > k$ one has $x_l = P_l^{-1} \circ \dots \circ P_{k+1}^{-1}(x_k) \rightarrow \infty$, that is, $\frac{a_{l+1}}{a_l} \rightarrow \infty$, as $l \rightarrow \infty$, by the second statement of Proposition 2.1. Hence the series diverges everywhere: has zero convergence radius. The contradiction thus obtained proves Theorem 1.8. \square

Proof of the addendum to Theorem 1.8. The transformations P_k from Proposition 2.1 depend holomorphically on the parameters. The convergence in the proposition is uniform on compact subsets in the parameter manifold, by similar uniform convergence of the sequences $\frac{h_k}{g_k}$ and $\frac{f_k}{g_k}$ to zero (see the condition of the addendum). Then for every compact subset K in the parameter manifold there exists a $N > 1$ such that for every $k > N$ the mapping P_k are contractions of the closed disk \overline{D}_C for all the parameters from the set K , with one and the same uniform bound $\lambda = \lambda(K) < 1$ for the contraction rate: the proofs of Proposition 2.1 and Theorem 1.8 remain valid with uniform convergence in the parameters from the set K . The expression under the limit (1.20) is well-defined and holomorphic in the parameters from the set K , and the convergence in (1.20) is uniform on K , by uniformness of the contraction. This together with Weierstrass Theorem implies that the limit is also holomorphic in the parameters from the set K . Finally, the sequence (x_k) , $x_k \in \mathbb{C}\mathbb{P}^1 = \overline{\mathbb{C}}$ depends holomorphically on the parameters, and thus, for every k the ratio $x_k = \frac{a_{k+1}}{a_k}$ is a $\overline{\mathbb{C}}$ -valued holomorphic, hence meromorphic function in the parameters. Fix a k for which it is not identically equal to ∞ and put $a_k \equiv 1$, $a_{k+1} = x_k$. Then the vector (a_k, a_{k+1}) depends meromorphically on the parameters, and hence, so do all the a_j , which are expressed via (a_k, a_{k+1}) by linear recurrence relations. The poles of the functions a_j are obviously contained in the pole divisor of the function a_{k+1} . In the case, when the parameter manifold is Stein and contractible, every analytic hypersurface (e.g., the pole divisor under question) is the zero locus of a holomorphic function Φ , see [14, chapter VIII, section B, lemma 12]. Replacing all a_j by Φa_j yields a series $\sum_k a_k z^k$ depending holomorphically on the parameters. The addendum is proved. \square

3 Explicit formulas for solutions and the coefficients $d_{j\pm}$

Here we present explicit formulas for the unique converging series from Theorem 1.10 solving recurrence relations (1.6). First in Subsection 3.1 we provide a general method for writing them, which essentially repeats and slightly generalizes the method from [10, section 3, pp. 337–338]. Then we write the above-mentioned formulas for $k \rightarrow +\infty$, and afterwards for $k \rightarrow -\infty$. At the end of the section we prove the statement of Theorems 1.1 and 1.10 on global holomorphic dependence of the solutions on the parameters.

3.1 Solution of recurrence relation via infinite matrix product: a general method

Here we consider a solution of general recurrence relations (1.9) from Theorem 1.8. Let g_k, f_k, h_k be the coefficients in (1.9). Let $P_k : \mathbb{CP}^1 \rightarrow \mathbb{CP}^1$ be the projectivizations of the transformations Λ_k^{-1} , see (2.2). Let $\sum_k a_k z^k$ be a solution to (1.9). Recall that $x_k = (a_k : a_{k+1}) \in \mathbb{CP}^1 \simeq \overline{\mathbb{C}}$, in the standard coordinate w on $\overline{\mathbb{C}}$ one has $x_k = \frac{a_{k+1}}{a_k}$. We have $x_{k-1} = P_k(x_k)$, and for every k the infinite product $P_k P_{k+1} \dots$ converges to x_{k-1} . More precisely, $P_k \circ \dots \circ P_m(z) \rightarrow x_{k-1}$, as $m \rightarrow \infty$ uniformly on compact subsets in $\mathbb{C} = \overline{\mathbb{C}} \setminus \{\infty\}$, as in the proof of Theorem 1.8.

One can then deduce that there exists a number sequence r_k such that for every k the infinite matrix product $(r_k \Lambda_k^{-1})(r_{k+1} \Lambda_{k+1}^{-1}) \dots$ converges to a rank 1 matrix \mathcal{R}_k such that

$$\begin{pmatrix} a_{k-1} \\ a_k \end{pmatrix} = \mathcal{R}_k \begin{pmatrix} 1 \\ 0 \end{pmatrix}. \quad (3.1)$$

The latter relation allows to write an explicit formula for the solution $\sum_k a_k z^k$ in the following way. The infinite product of the matrices Λ_k^{-1} themselves diverges, since their terms $-\frac{g_k}{f_k}$ tend to infinity: one has to find a priori unknown normalizing constants r_k . To construct a converging matrix product explicitly, we will consider a rescaled sequence a_k , that is

$$c_k = q_k a_k, \quad q_k \in \mathbb{C}, \quad \frac{q_{k-1}}{q_k} \simeq -\frac{f_k}{g_k} \rightarrow 0, \quad \text{as } k \rightarrow \infty.$$

Rewriting relations (1.9) in terms of the new sequence c_k yields

$$\begin{pmatrix} c_{k-1} \\ c_k \end{pmatrix} = M_k \begin{pmatrix} c_k \\ c_{k+1} \end{pmatrix}, \quad (3.2)$$

$$M_k = \begin{pmatrix} -\frac{q_{k-1} g_k}{q_k f_k} & -\frac{q_{k-1} h_k}{q_{k+1} f_k} \\ 1 & 0 \end{pmatrix} = \begin{pmatrix} 1 + o(1) & o(1) \\ 1 & 0 \end{pmatrix}.$$

The matrices M_k converge to the projector

$$P : \mathbb{C}^2 \rightarrow \mathbb{C}^2, \quad P = \begin{pmatrix} 1 & 0 \\ 1 & 0 \end{pmatrix}.$$

Our goal is to choose the rescaling factors q_k so that the infinite products

$$R_k = M_k M_{k+1} \dots$$

converge: then the limit is a one-dimensional operator R_k with $\ker R_k$ being generated by the vector $(0, 1)$. It appears that one can achieve the latter convergence by appropriate choice of normalizing constants q_k .

We use the following sufficient conditions of convergence of products of almost projectors M_k .

Lemma 3.1 *Let H be either a finite dimensional, or a Hilbert space. Let $M_k : H \rightarrow H$ be a sequence of bounded operators that tend (in the norm) to an orthogonal projector $P : H \rightarrow H$. Let*

$$M_k = P + S_k, \quad \sum_k \|S_k\| < \infty. \quad (3.3)$$

Then the infinite product $R_k = M_k M_{k+1} \dots$ converges in the norm, and $\ker P \subset \ker R_k$. One has $R_k \rightarrow P$, as $k \rightarrow \infty$, in the operator norm, and $\ker R_k = \ker P$ for every k large enough.

Proof Fix a k and set $T_n = T_{k,n} = M_k \dots M_n$ for $n \geq k$; $T_k = M_k$. One has

$$T_{n+1} = T_n M_{n+1} = T_n (P + S_{n+1}), \quad T_{n+1} - T_n P = T_n S_{n+1}.$$

The latter equality implies that

$$\|T_{n+1}\| \leq \|T_n\| (1 + \|S_{n+1}\|) \leq e^{\|S_{n+1}\|} \|T_n\|.$$

This implies that

$$\|T_{k,n}\| \leq C_k, \quad C_k = e^{\sum_{j \geq k} \|S_j\|} \|M_k\|. \quad (3.4)$$

Now one has

$$\begin{aligned} T_{k,n} &= T_{k,n-1} P + T_{k,n-1} S_n, \\ T_{k,n+1} &= T_{k,n} P + T_{k,n} S_{n+1} = T_{k,n-1} P^2 + T_{k,n-1} S_n P + T_{k,n} S_{n+1} \end{aligned}$$

$$= T_{k,n-1}P + T_{k,n-1}S_nP + T_{k,n}S_{n+1} :$$

here we have used the fact that P is a projector, that is, $P^2 = P$. The two latter formulas together with (3.4) imply that

$$\|T_{k,n+1} - T_{k,n}\| \leq C_k(2\|S_n\| + \|S_{n+1}\|).$$

The latter right-hand side being a converging series in n , the sum of the left-hand sides in n converges and so does $T_{k,n}$, as $n \rightarrow \infty$, in the operator norm. This also implies that the norm distance of each $T_{k,n}$ to the limit $R_k = \lim_{n \rightarrow \infty} T_{k,n}$ is bounded from above by $\Delta_{k,n} = 3C_k \sum_{j \geq n} \|S_j\|$. Applying this estimate to $T_{k,k} = M_k$, we get $\text{dist}(M_k, R_k) \leq \Delta_{k,k} = 3C_k \sum_{j \geq k} \|S_j\|$. One has $\Delta_{k,n} \rightarrow 0$, as $n \rightarrow \infty$ uniformly in k , and also $\Delta_{k,n} \rightarrow 0$, as $k, n \rightarrow \infty$ so that $k \leq n$. This implies that R_k and M_k converge to the same limit P in the operator norm, as $k \rightarrow \infty$. For every $v \in \ker P$ one has $M_n v = S_n v \rightarrow 0$. Hence, $T_{k,n} v = T_{k,n-1}(S_n v) \rightarrow 0$, as $n \rightarrow \infty$. Therefore, $R_k v = 0$ and $\ker P \subset \ker R_k$. Let $N > 0$ be such that for every $k > N$ one has $\|R_k - P\| < 1$. Let us show that $\ker R_k = \ker P$ for these k . Indeed, suppose the contrary: $\ker R_k$ is strictly bigger than $\ker P$ for some $k > N$. Note that $H = \ker P \oplus P(H)$ (orthogonal decomposition), since P is an orthogonal projector. Therefore, there exists a vector $u_k \in P(H)$ such that $R_k(u_k) = 0$. Hence,

$$\|P(u_k)\| = \|(P - R_k)(u_k)\| < \|u_k\|,$$

while $P(u_k) = u_k$, since P is a projector. The contradiction thus obtained proves the lemma. \square

Addendum to Lemma 3.1. *Let in Lemma 3.1 the operators S_n depend holomorphically on some parameters so that the series $\sum_n \|S_n\|$ converges uniformly on compact subsets in the parameter space. Then the infinite products R_k are also holomorphic in the parameters.*

Proof The above proof implies that the sequence $T_{k,n}$ converges uniformly on compact subsets in the parameter space. This together with the Weierstrass Theorem implies the holomorphicity of the limit. \square

Corollary 3.2 *Let*

$$M_k = \begin{pmatrix} 1 + \delta_{11,k} & \delta_{12,k} \\ 1 & 0 \end{pmatrix}, \quad \sum_k |\delta_{ij,k}| < \infty \text{ for } (ij) = (11), (12). \quad (3.5)$$

Then the infinite product $R_k = M_k M_{k+1} \dots$ converges, and the right column of the limit product matrix R_k vanishes. In the case, when $\delta_{12,k} \neq 0$ for all k ,

the limit matrix R_k has rank 1 for all k : its kernel is generated by the vector $(0, 1)$. In the case, when $\delta_{ij,k}$ depend holomorphically on some parameters and the convergence of the corresponding series is uniform on compact sets in the parameter manifold, the limit R_k is also holomorphic.

Addendum to Corollary 3.2. In the conditions of the corollary set

$$c_k = (0, 1)R_k \begin{pmatrix} 1 \\ 0 \end{pmatrix}. \quad (3.6)$$

Then the sequence c_k is a solution of recurrence relations (3.2) such that $\frac{c_k}{c_{k-1}} \rightarrow 1$, as $k \rightarrow \infty$, and one has

$$\begin{pmatrix} c_{k-1} \\ c_k \end{pmatrix} = R_k \begin{pmatrix} 1 \\ 0 \end{pmatrix}. \quad (3.7)$$

Proof of Corollary 3.2. This is the direct application of the lemma and its addendum for the norm induced by appropriate scalar product: the latter product should make the matrix

$$P = \begin{pmatrix} 1 & 0 \\ 1 & 0 \end{pmatrix}$$

an orthogonal projector. The kernel $\ker R_k$ contains the kernel $\ker P$, which is generated by the vector $(0, 1)$; $\ker R_k = \ker P$, i.e., $rk(R_k) = 1$ for all k large enough, by the lemma. In particular, the right column in each R_k vanishes. Now it remains to note that $rk(R_k) = 1$ for all k , since the matrices M_k are all non-degenerate: $\delta_{12,k} \neq 0$. The corollary is proved. \square

Proof of the Addendum to Corollary 3.2. Consider the affine chart $\mathbb{C} = \mathbb{CP}^1 \setminus \{(1 : -1)\}$ with the coordinate $w = \frac{z_1 - z_2}{z_1 + z_2}$ centered at $(1 : 1)$. The projectivizations P_k of the linear operators $M_k : \mathbb{C}^2 \rightarrow \mathbb{C}^2$ converge to the constant mapping $\mathbb{CP}^1 \mapsto (1 : 1)$ uniformly on compact subsets in \mathbb{C} . Hence, for every $C > 0$ there exist a $N = N(C) > 0$ and a λ , $0 < \lambda < 1$ such that for every $k \geq N$ one has $P_k(\overline{D_C}) \Subset D_C$, and P_k is a λ -contraction of the disk $\overline{D_C}$, as in the proof of Theorem 1.8 in the previous section. This together with Theorem 1.17 implies that there exists a sequence $(x_k)_{k \geq N(C)}$, $x_k \in \overline{\mathbb{C}} = \mathbb{CP}^1$, $w(x_k) \rightarrow 0$, as $k \rightarrow \infty$, such that $P_k(x_k) = x_{k-1}$ and $P_k \circ \dots \circ P_m$ converges to the constant mapping $\mathbb{CP}^1 \mapsto x_{k-1}$ uniformly on compact subsets in \mathbb{C} , as $m \rightarrow \infty$. Convergence at $(1 : 0)$ implies that $x_{k-1} = (R_{k,11} : R_{k,21})$. Moreover, $R_{k,21} = R_{k+1,11}$, since $R_k = M_k R_{k+1}$ and the matrix M_k has lower row $(1, 0)$. The two last statements together imply

that the sequence $c_k = R_{k,21}$ satisfies recurrence relations (3.2) and formulas (3.6), (3.7). One has $\frac{c_{k+1}}{c_k} \rightarrow 1$, since $x_k = (c_k : c_{k+1}) \rightarrow (1 : 1)$. This proves the addendum. \square

Corollary 3.3 *Consider recurrence relations (1.9). Let $q_k \in \mathbb{C}$ be a sequence such that the rescaling $c_k = q_k a_k$ transforms (1.9) to (3.2). Let the corresponding matrices M_k from (3.2) be the same, as in (3.5). Let c_k be the same, as in (3.6). Then the sequence*

$$a_k = q_k^{-1} c_k$$

is a solution of relations (1.9) for $k \geq 1$ such that the series $\sum_{k \geq 0} a_k z^k$ converges on all of \mathbb{C} .

Proof The sequence (a_k) is a solution of (1.9), by construction and the Addendum to Corollary 3.2. One has $\frac{q_{k-1}}{q_k} \simeq -\frac{f_k}{g_k} \rightarrow 0$, as $k \rightarrow \infty$, since the above sequence rescaling transforms (1.9) to (3.2). Therefore, $\frac{a_k}{a_{k-1}} \rightarrow 0$, by the latter statement and since $\frac{c_k}{c_{k-1}} \rightarrow 1$, as was shown above. This implies the convergence of the series $\sum_{k \geq 0} a_k z^k$ on \mathbb{C} and proves the corollary. \square

3.2 Forward solutions from Theorems 1.1 and 1.10

Here we give explicit formulas for the solution $\sum_k a_k z^k$ of recurrence relations (1.6) converging, as $k \rightarrow +\infty$.

Case 1): $b, b+n \notin \mathbb{Z}$ (i.e., the conditions of Theorem 1.1 hold).

Let us invert matrix relation (1.7). We get

$$\begin{pmatrix} a_{k-1} \\ a_k \end{pmatrix} = W_k \begin{pmatrix} a_k \\ a_{k+1} \end{pmatrix}, \quad (3.8)$$

$$W_k = \begin{pmatrix} \frac{k+b}{\mu} \left(1 + \frac{\lambda}{(k+b)(k+b+n-1)}\right) & \frac{k+b+1}{k+b+n-1} \\ 1 & 0 \end{pmatrix}.$$

To obtain an explicit formula for solution of relation (1.6), we will use results of Subsection 3.1. To do this, we reduce equation (3.8) to a similar equation with the matrix in the right-hand side converging to a projector. This is done by renormalizing the sequence a_k by multiplication by appropriate constants depending on $k \geq 0$. Namely, set

$$c_k = \frac{a_k(b)_{k+1}}{\mu^k}, \quad (b)_l := b \dots (b+l-1) = \frac{\Gamma(b+l)}{\Gamma(b)}.$$

Recall that the symbol $(b)_l$ is called the *Pochhammer symbol*. Translating relations (3.8) in terms of the sequence c_k yields

$$\begin{aligned} \begin{pmatrix} c_{k-1} \\ c_k \end{pmatrix} &= M_k \begin{pmatrix} c_k \\ c_{k+1} \end{pmatrix}, \\ M_k &= \begin{pmatrix} 1 + \frac{\lambda}{(k+b)(k+b+n-1)} & \frac{\mu^2}{(k+b)(k+b+n-1)} \\ 1 & 0 \end{pmatrix} \\ &= \begin{pmatrix} \frac{(b)_k}{\mu^{k-1}} & 0 \\ 0 & \frac{(b)_{k+1}}{\mu^k} \end{pmatrix} W_k \begin{pmatrix} \frac{\mu^k}{(b)_{k+1}} & 0 \\ 0 & \frac{\mu^{k+1}}{(b)_{k+2}} \end{pmatrix}. \end{aligned} \quad (3.9)$$

The infinite matrix product

$$R_k = M_k M_{k+1} \dots \quad (3.10)$$

converges and depends analytically on (λ, μ, n, b) at those points, where the denominators in its definition do not vanish, by Corollary 3.2.

Theorem 3.4 *Let $b, b+n \notin \mathbb{Z}$. For $k \geq 0$ set*

$$c_k = \begin{pmatrix} 0 & 1 \end{pmatrix} R_k \begin{pmatrix} 1 \\ 0 \end{pmatrix}, \quad (3.11)$$

$$a_k = \frac{\mu^k}{(b)_{k+1}} c_k \quad (3.12)$$

The coefficients a_k satisfy recurrence relations (1.6) for all $k \geq 1$, and the series

$$f_+(z) = \sum_{k \geq 1} a_k z^k \quad (3.13)$$

converges on all of \mathbb{C} .

Proof The sequence c_k satisfies relations (3.9), and $\frac{c_k}{c_{k-1}} \rightarrow 1$, as $k \rightarrow \infty$, by the Addendum to Corollary 3.2. This implies that a_k satisfy (1.6). The series (3.13) converges on all of \mathbb{C} , by Corollary 3.3. This proves the theorem. \square

Case 2): some of the numbers b or $b+n$ is an integer. Set

$$k_{0+} = \max\{m \in \{-1-b, 1-b-n\} \mid m \in \mathbb{Z}\}. \quad (3.14)$$

Note that now the product $(b)_l = b(b+1)\dots(b+l-1)$ can be equal to zero, and thus, the sequence a_k defined by (3.12) is not necessarily well-defined.

Let us modify the above rescaling coefficients relating a_k and c_k as follows. For every $s \leq l + 1$ set

$$(b)_{s,l+1} = (b+s) \dots (b+l) = \frac{(b)_{l+1}}{(b)_s}; \quad (b)_{0,l+1} = (b)_{l+1}; \quad (b)_{s,s} = 1. \quad (3.15)$$

Set

$$c_k = a_k \mu^{k_{0+}+1-k} (b)_{k_{0+}+2,k+1} \text{ for every } k > k_{0+}; \quad c_{k_{0+}+1} = a_{k_{0+}+1}. \quad (3.16)$$

The sequence (a_k) satisfies (1.7), if and only if the sequence (c_k) satisfies (3.9). The above formulas remain valid with the same matrices M_k , which are well-defined for $k \geq k_{0+} + 2$: the denominators in its fractions do not vanish. Therefore, the infinite product $R_k = M_k M_{k+1} \dots$ is well-defined for the same k in the case under consideration.

Theorem 3.5 *Let b, n, k_{0+} be as above, M_k be as in (3.9), $R_k = M_k M_{k+1} \dots$,*

$$c_k = R_{k,21} \text{ for } k \geq k_{0+} + 2, \quad c_{k_{0+}+1} = R_{k_{0+}+2,11}, \quad (3.17)$$

$$a_k = \mu^{k-k_{0+}-1} \frac{c_k}{(b)_{k_{0+}+2,k+1}} \text{ for } k \geq k_{0+} + 1, \quad (3.18)$$

$$a_{k_{0+}} = \frac{((k_{0+} + b + 1)(k_{0+} + b + n) + \lambda) a_{k_{0+}+1} + \mu(k_{0+} + b + 2) a_{k_{0+}+2}}{\mu(k_{0+} + b + n)}. \quad (3.19)$$

The sequence $(a_k)_{k \geq k_{0+}}$ satisfies recurrence relations (1.6) for $k > k_{0+}$. The series $\sum_{k=k_{0+}}^{+\infty} a_k z^k$ converges on all of \mathbb{C}^* .

Proof The sequence c_k satisfies relations (3.9) for $k \geq k_{0+} + 2$, by the Addendum to Corollary 3.2. Therefore, a_k satisfy relations (1.7), which are equivalent to (1.6), see the previous discussion. Formula (3.19) is equivalent to relation (1.6) for $k = k_{0+} + 1$. The denominator $\mu(k_{0+} + b + n)$ in (3.19) does not vanish. In the case, when $b + n \notin \mathbb{Z}$, this is obvious. In the case, when $b + n \in \mathbb{Z}$, one has $k_{0+} + b + n \geq 1$, by (3.14). The series $\sum_{k \geq k_0} a_k z^k$ converges on \mathbb{C}^* , by Corollary 3.3. The theorem is proved. \square

3.3 Backward solutions

Here we give explicit formulas for the solution $\sum_k a_k z^{-k}$ of recurrence relations (1.6) with $k \rightarrow -\infty$. Set

$$m = -k, \quad \hat{a}_m = a_{-m}.$$

Relation (1.7) in new variables m and \hat{a}_m takes the matrix form

$$\begin{pmatrix} \hat{a}_m \\ \hat{a}_{m-1} \end{pmatrix} = A_{-m} \begin{pmatrix} \hat{a}_{m+1} \\ \hat{a}_m \end{pmatrix}.$$

Writing the latter equation with permuted order of vector components (we place \hat{a}_s having smaller indices above) yields the same equation with the new matrix obtained from A_{-m} by permutation of lines and columns:

$$\begin{pmatrix} \hat{a}_{m-1} \\ \hat{a}_m \end{pmatrix} = \hat{A}_m \begin{pmatrix} \hat{a}_m \\ \hat{a}_{m+1} \end{pmatrix}, \quad (3.20)$$

$$\hat{A}_m = \frac{b+n-m-1}{b-m+1} \begin{pmatrix} -\frac{\lambda+(b-m)(b-m+n-1)}{\mu(b-m+n-1)} & 1 \\ \frac{b-m+1}{b-m+n-1} & 0 \end{pmatrix}. \quad (3.21)$$

Case 1): $b, b+n \notin \mathbb{Z}$, as in the conditions of Theorem 1.1. Let us renormalize the sequence \hat{a}_m : for $m \geq 0$ set

$$\hat{c}_m = \frac{\hat{a}_m(2-n-b)_{m+1}}{\mu^m}.$$

Translating equation (3.20) in terms of the sequence \hat{c}_m yields

$$\begin{pmatrix} \hat{c}_{m-1} \\ \hat{c}_m \end{pmatrix} = S_m \begin{pmatrix} \hat{c}_m \\ \hat{c}_{m+1} \end{pmatrix}, \quad (3.22)$$

$$\begin{aligned} S_m = S_m(b, n) &= \begin{pmatrix} 1 + \frac{\lambda-n+2}{(b-m+1)(b-m+n-2)} & \frac{\mu^2(b-m+n-1)}{(b-m+1)(b-m+n-2)(b-m+n-3)} \\ 1 & 0 \end{pmatrix} \\ &= \begin{pmatrix} \frac{(2-n-b)_m}{\mu^{m-1}} & 0 \\ 0 & \frac{(2-n-b)_{m+1}}{\mu^m} \end{pmatrix} \hat{A}_m \begin{pmatrix} \frac{\mu^m}{(2-n-b)_{m+1}} & 0 \\ 0 & \frac{\mu^{m+1}}{(2-n-b)_{m+2}} \end{pmatrix}. \end{aligned} \quad (3.23)$$

Theorem 3.6 *Let $b, b+n \notin \mathbb{Z}$. Let the matrices S_m be as above,*

$$T_m = S_m S_{m+1} \dots, \quad (3.24)$$

$$\hat{c}_m = \begin{pmatrix} 0 & 1 \end{pmatrix} T_m \begin{pmatrix} 1 \\ 0 \end{pmatrix}, \quad \hat{a}_m = \frac{\hat{c}_m \mu^m}{(2-n-b)_{m+1}}, \quad a_k = \hat{a}_{-k}. \quad (3.25)$$

The sequence (a_k) satisfies recurrence relations (1.6) for $k \leq -1$, and the series

$$f_-(z) = \sum_{k \leq 0} a_k z^{-k} \quad (3.26)$$

converges on \mathbb{C} .

Proof The above matrix product converges, and the sequence \hat{c}_m satisfies equation (3.22), by Corollary 3.2 and its addendum. This implies that the corresponding sequence \hat{a}_m satisfies (3.20), the sequence a_k satisfies (1.6) and the series $f_-(z)$ converges, as in the previous subsection. This proves the theorem. \square

Case 2): some of the numbers b or $b + n$ is an integer. Let

$$k_{0-} = \min\{r \in \{-1 - b, 1 - b - n\} \mid r \in \mathbb{Z}\}, \quad m_0 = -k_{0-}. \quad (3.27)$$

The above Pochhammer symbol may be not well-defined in the case, when $n + b \in \mathbb{Z}$, $2 - n - b < 0$. We use the inequalities

$$\begin{aligned} b - m + 1 &\neq 0 \text{ for every } m > m_0; \\ 2 - n - b + m, 3 - n - b + m &\neq 0 \text{ for every } m \geq m_0, \end{aligned} \quad (3.28)$$

which follow immediately from (3.27). The sequence rescaling

$$\hat{c}_m = \frac{\hat{a}_m(2 - n - b)_{m_0, m+1}}{\mu^m}$$

is well-defined and invertible for all $m \geq m_0$, by (3.28). It differs from the previous sequence rescaling from Case 1) by multiplication by constant independent on m , and hence, transforms (3.20) to (3.22), as above. The matrices S_m are well-defined for $m > m_0$: the denominators in their fractions do not vanish, by (3.28). Let T_m be their products (3.24) defined for $m > m_0$.

Theorem 3.7 *Let S_m and T_m be the same, as in (3.24),*

$$\begin{aligned} \hat{c}_m &= (0 \quad 1) T_m \begin{pmatrix} 1 \\ 0 \end{pmatrix} \text{ for } m > m_0, \quad c_{m_0} = T_{m_0+1}, \quad 11, \\ \hat{a}_m &= \frac{\hat{c}_m \mu^m}{(2 - n - b)_{m_0, m+1}} \text{ for } m \geq m_0, \quad a_k = \hat{a}_{-k}. \end{aligned} \quad (3.29)$$

The sequence $(a_k)_{k \leq k_{0-}}$ satisfies recurrence relations (1.6) for $k < k_{0-}$, and the series $\sum_{k \leq k_{0-}} a_k z^{-k}$ converges on \mathbb{C}^ .*

The proof of Theorem 3.7 repeats the proof of Theorem 3.6 with obvious changes.

3.4 Theorem 1.1: formulas for $d_{0\pm}$ and $d_{1\pm}$

Lemma 3.8 *Let $(n, \lambda, \mu, b) \in U$, see (1.4). Let $f_+(z) = \sum_{k \geq 1} a_k z^k$ and $f_-(z) = \sum_{k \leq 0} a_k z^{-k}$ be the functions from (3.13) and (3.26) constructed in the two previous subsections, case 1). Then*

$$z^{-b} \mathcal{L}(z^b f_{\pm}(z^{\pm 1})) = d_{0\pm} + d_{1\pm} z, \quad (3.30)$$

$$d_{0+} = \mu(b+1)a_1; \quad d_{1+} = ((b+1)(b+n) + \lambda)a_1 + \mu(b+2)a_2, \quad (3.31)$$

where a_1 and a_2 are the same, as in (3.12);

$$d_{0-} = (b(b+n-1) + \lambda)a_0 - \mu(b+n-1)a_{-1}; \quad d_{1-} = -\mu(b+n)a_0, \quad (3.32)$$

where a_{-1} and a_0 are the same, as in (3.25).

Proof The left-hand side in (3.30) with index “+” is a Taylor series with coefficients at z^k being equal to the left-hand side of the corresponding recurrence relation (1.6). The latter relation holds for all $k \geq 2$, by construction. This implies (3.30) with d_{0+} , d_{1+} being equal to the left-hand sides of relations (1.6) for $k = 0$ and $k = 1$ respectively. This implies (3.31). The proof for the index “-” is analogous. \square

3.5 End of proof of Theorems 1.1 and 1.10: holomorphic dependence of solutions on the parameters

Proposition 3.9 *The solutions (a_k) of recurrence relations (1.6) constructed above via infinite matrix products depend holomorphically on the parameters from the domain, where all the factors of the matrix product are well-defined.*

The proposition follows immediately from construction and Corollary 3.2. It implies the statements of Theorems 1.1 and 1.10 on holomorphic dependence of the corresponding solutions on the parameters.

4 Application: monodromy eigenvalues

Here we study the eigenfunctions of the monodromy operator of Heun equation (1.1). Recall that the monodromy operator of a linear differential equation on the Riemann sphere acts on the space of germs of its solutions at a nonsingular point z_0 . Namely, fix a closed path α starting at z_0 in the complement to the singular points of the equation. The monodromy operator along the path α sends each germ to the result of its analytic extension along

the path α . It is completely determined by the homotopy class of the path α in the complement to the singular points of the equation. In the case under consideration of double confluent Heun equations (1.1) there are exactly two singular points: zero and infinity. By the *monodromy operator of double confluent Heun equation* (1.1) we mean the monodromy operator along a counterclockwise circuit around zero. Each monodromy eigenfunction with an eigenvalue $e^{2\pi ib}$ has the form of a series

$$E(z) = \sum_{k \in \mathbb{Z}} a_k z^{k+b}, \quad b \in \mathbb{C}, \quad (4.1)$$

converging on \mathbb{C}^* . Here we write down an explicit analytic equation on those b , for which the latter solution $E(z)$ of equation (1.1) exists, i.e., there exists a bi-infinite sequence $(a_k)_{k \in \mathbb{Z}}$ satisfying recurrence relations (1.6) such that the bi-infinite series $\sum_{k \in \mathbb{Z}} a_k z^k$ converges on \mathbb{C}^* .

We consider different cases, but the method of finding the above b is general for all of them. The coefficients a_k with $k \rightarrow +\infty$ should form a unique converging series (up to constant factor) that satisfies recurrence relations (1.6). Similarly, its coefficients with $k \rightarrow -\infty$ should form a unique converging series satisfying (1.6). Finally, the above positive and negative parts of the series should paste together and form a solution of Heun equation. In the simplest, non-resonant case, when $b, b+n \notin \mathbb{Z}$, the pasting equation is given by (1.5). The coefficients a_k , $k \geq 1$ satisfying (1.6) for $k \geq 2$ and forming a converging series are given by formulas (3.12); the sequence $(a_k)_{k \leq 0}$, $a_k = \hat{a}_{-k}$, satisfying (1.6) for $k < 0$ and forming a converging series is given by formula (3.25).

It appears that substituting the above-mentioned formulas for a_k to formulas (3.31) and (3.32) for $d_{j\pm}$ and then substituting the latter formulas to (1.5) yields a rather complicated pasting equation. To obtain a simpler formula, we proceed as follows. In the non-resonant case we extend the sequence $(a_k)_{k \geq 1}$ to $k = 0$ by putting appropriate $\alpha \in \mathbb{C}$ instead of a_0 (we get α, a_1, a_2, \dots) so that the longer sequence thus obtained satisfies (1.6) also for $k = 1$. Similarly, we extend the sequence $(a_k)_{k \leq 0}$ to $k = 1$ by putting appropriate $\beta \in \mathbb{C}$ instead of a_1 (we get $\dots a_{-1}, a_0, \beta$) in order to satisfy equation (1.6) for $k = 0$. The positive and negative series thus constructed paste together to a converging bi-infinite series $\sum_{k \in \mathbb{Z}} a_k z^k$ satisfying (1.6) (after their rescaling by constant factors), if and only if

$$\alpha\beta = a_0 a_1. \quad (4.2)$$

We obtain an explicit expression for equation (4.2).

In what follows, we use the two next propositions.

Proposition 4.1 *The determinant of the monodromy operator of Heun equation (1.1) equals $e^{-2\pi in}$.*

Proof We prove the statement of the proposition for $\mu \neq 0$: then it will follow automatically for $\mu = 0$, by continuity. The monodromy matrix is the product of the formal monodromy matrix $\text{diag}(1, e^{-2\pi in})$ and a pair of unipotent matrices: the inverse to the Stokes matrices, cf. [18, formulas (2.15) and (3.2)]. Therefore, its determinant equals $e^{-2\pi in}$. Another possible proof would be to use the formula for Wronskian of two linearly independent solutions of equation (1.1) from [10, p. 339, proof of theorem 4]. It shows that the Wronskian equals z^{-n} times a function holomorphic on \mathbb{C}^* , and hence, it gets multiplied by $e^{-2\pi in}$ after analytic continuation along a positive circuit around zero. \square

Recall, see [30, equations (32), (34)], [10, p. 336, lemma 1] that the transformation $\# : E \mapsto \#E$:

$$(\#E)(z) := 2\omega z^{-n}(E'(z^{-1}) - \mu E(z^{-1})), \quad \lambda + \mu^2 = \frac{1}{4\omega^2}, \quad \omega > 0 \quad (4.3)$$

is an involution acting on the space of solutions of equation (1.1).

Proposition 4.2 *Let the monodromy operator of Heun equation have distinct eigenvalues. Then the involution $\#$ permutes the corresponding eigenfunctions.*

Proof The involution under question is a composition of transformation of a function to its linear combination with its derivative, the variable change $z \mapsto z^{-1}$ and multiplication by z^{-n} . Let now E be a monodromy eigenfunction with eigenvalue λ_1 . The composition of the first and second operations transforms E to a function, whose analytic extension along a counterclockwise closed path around zero multiplies it by λ_1^{-1} : the second operation inverses the direction of the path. The multiplication by z^{-n} multiplies the above result of analytic extension by $e^{-2\pi in}$. Therefore, $\#E$ is a monodromy eigenfunction with the eigenvalue $\lambda_2 = \lambda_1^{-1}e^{-2\pi in}$. It coincides with the second monodromy eigenvalue, since it is found by the condition that $\lambda_1\lambda_2 = e^{-2\pi in}$, see Proposition 4.1. This proves the proposition. \square

4.1 Nonresonant case: $b, b+n \notin \mathbb{Z}$

In this case the denominators in formulas (3.9) and (3.23) for the matrices M_k and S_m respectively are nonzero for all integer k and m , and

hence, the matrices are well-defined together with the infinite products $R_k = M_k M_{k+1} \dots$, $T_m = S_m S_{m+1} \dots$.

Theorem 4.3 *Let $b, b+n \notin \mathbb{Z}$. Equation (1.1) has a monodromy eigenfunction with eigenvalue $e^{2\pi i b}$, $b \in \mathbb{C}$, if and only if*

$$(b+1)(b+n-2)R_{1,11}T_{0,11} + \mu^2 R_{1,21}T_{0,21} = 0. \quad (4.4)$$

Proof Let $f_+(z) = \sum_{k \geq 1} a_k z^k$ be a converging series satisfying (1.6) for $k \geq 2$. Recall, see (3.12), that

$$a_1 = \frac{\mu}{b(b+1)} \begin{pmatrix} 0 & 1 \\ 1 & 0 \end{pmatrix} R_1 \begin{pmatrix} 1 \\ 0 \end{pmatrix}.$$

Let us extend formula (3.12) to $k=0$: set

$$\alpha = \frac{1}{b} \begin{pmatrix} 0 & 1 \\ 1 & 0 \end{pmatrix} R_0 \begin{pmatrix} 1 \\ 0 \end{pmatrix} = \frac{1}{b} \begin{pmatrix} 1 & 0 \\ 0 & 1 \end{pmatrix} R_1 \begin{pmatrix} 1 \\ 0 \end{pmatrix}.$$

The sequence α, a_1, a_2, \dots satisfies (1.6) for $k \geq 1$, by Theorem 3.4. Recall, see (3.25), that

$$\hat{c}_0 = \begin{pmatrix} 0 & 1 \\ 1 & 0 \end{pmatrix} T_0 \begin{pmatrix} 1 \\ 0 \end{pmatrix}, \quad \hat{a}_0 = a_0 = \frac{\hat{c}_0}{2-n-b}.$$

Let us extend formula (3.25) to $k=1, m=-1$: set

$$\beta = \mu^{-1} \begin{pmatrix} 0 & 1 \\ 1 & 0 \end{pmatrix} T_{-1} \begin{pmatrix} 1 \\ 0 \end{pmatrix} = \mu^{-1} \begin{pmatrix} 1 & 0 \\ 0 & 1 \end{pmatrix} T_0 \begin{pmatrix} 1 \\ 0 \end{pmatrix}.$$

The sequence $\dots, a_{-2}, a_{-1}, a_0, \beta$ satisfies (1.6) for all $k \leq 0$, by Theorem 3.6. Substituting the above formulas for a_1, α, a_0, β to pasting equation (4.2) yields (4.4). The theorem is proved. \square

4.2 Resonant case: at least one of the numbers $b, b+n$ is integer

Proposition 4.4 *Let at least one of the numbers $b, b+n$ be integer. Then Heun equation (1.1) has a solution of type $E(z) = z^b f(z)$ with $f(z)$ being a holomorphic function on \mathbb{C}^* , if and only if it has a solution holomorphic on \mathbb{C}^* , i.e., corresponding to $b=0$. In this case the monodromy eigenvalues are 1 and $e^{-2\pi i n}$.*

Proof Let the above solution E exist. Then it is a monodromy eigenfunction with the eigenvalue $e^{2\pi ib}$. The other eigenvalue equals $e^{-2\pi i(b+n)}$, by Proposition 4.1. At least one eigenvalue equals one, since either b , or $b+n$ is integer, by assumption. The monodromy eigenfunction corresponding to unit eigenvalue is holomorphic on \mathbb{C}^* . Conversely, a solution holomorphic on \mathbb{C}^* is a solution E as above with $b=0$. It is a monodromy eigenfunction with unit eigenvalue. Then the other eigenvalue equals $e^{-2\pi in}$, by Proposition 4.1. This proves proposition 4.4. \square

Corollary 4.5 *A solution E as in Proposition 4.4 exists, if and only if the recurrence relations (1.6) with $b=0$:*

$$(k(k+l) + \lambda)a_k - \mu(k+l)a_{k-1} + \mu(k+1)a_{k+1} = 0, \quad l = n-1 \quad (4.5)$$

have a solution $(a_k)_{k \in \mathbb{Z}}$ such that the series $\sum_{k \in \mathbb{Z}} a_k z^k$ converges on \mathbb{C}^ .*

Proposition 4.6 *Every semiinfinite sequence $(a_k)_{k \geq -2}$ satisfying equations (4.5) for $k \geq -1$ (without convergence condition) satisfies the relation*

$$(1-l+\lambda)a_{-1} - \mu(l-1)a_{-2} = 0. \quad (4.6)$$

Proof Equation (4.6) coincides with (4.5) for $k=-1$. \square

Proposition 4.7 *Let $l \notin \mathbb{Z}$, $n=l+1$. A solution of Heun equation (1.1) holomorphic on \mathbb{C}^* exists, if and only if at least one of the two following statements holds:*

- *either the unique semiinfinite sequence $(a_k)_{k \leq -1}$ solving relations (4.5) for $k \leq -2$ with series $\sum_{k=-\infty}^{-1} a_k z^k$ converging on \mathbb{C}^* satisfies relation (4.6);*

- *or Heun equation (1.1) has an entire solution: holomorphic on \mathbb{C} .*

Proof Let

$$f(z) = \sum_{k=-\infty}^{-1} a_k z^k \quad (4.7)$$

be a semiinfinite solution of recurrence relations (4.5) for $k \leq -2$. Note that for every $k \leq -1$ its coefficient a_k is uniquely determined as a linear combination of the two previous ones a_{k-2} and a_{k-1} , see (4.5) written for $k \leq -2$, since $\mu \neq 0$, see (1.1). The same holds in the opposite direction: for every $k \leq -3$ the coefficient a_k is expressed as a linear combination of the coefficients a_{k+1} and a_{k+2} by (4.5), since $l \notin \mathbb{Z}$. The two latter

statements together imply that a_{-2} and a_{-1} do not both vanish. Therefore, the above negative semiinfinite series can be extended to positive k as a (may be just formal) two-sided solution of (4.5) only in the case, when relation (4.6) holds. Let us show that in this case it does extend to a true (not just formal) two-sided solution.

Note that $a_{-1} \neq 0$, by relation (4.6) and since a_{-2} , a_{-1} do not vanish both, $\mu \neq 0$ and $l \neq 1$. Equation (4.5) with $k = -1$ has zero multiplier at a_0 , see (4.6), and hence, holds for arbitrary a_0 . The same equation with $k = 0$ yields

$$\lambda a_0 - l\mu a_{-1} + \mu a_1 = 0. \quad (4.8)$$

This is a linear non-homogeneous equation on the pair (a_0, a_1) . Hence, its solutions form a line $L_1 \subset \mathbb{C}^2$ that does not pass through the origin: $a_{-1} \neq 0$. On the other hand, the pairs (a_0, a_1) extendable to true (not just formal) semiinfinite solutions in positive k exist and are all proportional (uniqueness of solution up to constant factor and since for every $k \geq 1$ the coefficient $a_{k\pm 1}$ is uniquely determined by a_k and $a_{k\mp 1}$ via relations (4.5), since $l \notin \mathbb{Z}$). Hence, they form a line L_0 through the origin. Let us choose (a_0, a_1) to be the intersection of the above lines L_0 and L_1 , provided they are not parallel (the case of parallel lines is discussed below). Then the pair (a_0, a_1) extends to a semiinfinite solution of relations (4.5) in positive k , by construction. The complete Laurent series $\sum_{k=-\infty}^{+\infty} a_k z^k$ thus constructed is a solution to equations (4.5) and hence, to Heun equation (1.1).

Case, when L_0 and L_1 are parallel. In this case $L_0 = \{\lambda a_0 + \mu a_1 = 0\}$, and (a_0, a_1) defines a solution to (4.5) with positive k , if and only if $(a_0, a_1) \in L_0$. This solution extends to negative k by putting $a_k = 0$ for $k < 0$, since relation (4.5) for $k = -1, 0$ is equivalent to (4.6) and (4.8) respectively. Finally we obtain a *converging Taylor series* satisfying (4.5) and hence, presenting a solution of Heun equation (1.1) holomorphic on \mathbb{C} . Proposition 4.7 is proved. \square

The next theorem describes those parameter values for which Heun equation (1.1) has an entire solution. To state it, consider the following matrices M_k , R_k and numbers a_k , ξ_l :

$$M_k = \begin{pmatrix} 1 + \frac{\lambda}{k(k+l)} & \frac{\mu^2}{k(k+l)} \\ 1 & 0 \end{pmatrix}, \quad R_k = M_k M_{k+1} \dots \quad \text{for } k \geq 1,$$

$$a_k = \frac{\mu^k}{k!} R_{k,21} \quad \text{for } k \geq 1, \quad a_0 = R_{1,11},$$

$$\xi_l = \xi_l(\lambda, \mu) = \lambda a_0 + \mu a_1 = \lambda R_{1,11} + \mu^2 R_{1,21}. \quad (4.9)$$

Theorem 4.8 *A Heun equation (1.1) with $n = l + 1$, $l \in \mathbb{C} \setminus \mathbb{Z}_{<0}$ has an entire solution, if and only if $\xi_l(\lambda, \mu) = 0$.*

Theorem 4.8 is equivalent to Corollary 1.6. It was partly proved and conjectured in [10, section 3, theorem 2] and proved completely for entire $l \geq 0$ in [13, subsection 3.1, theorem 3.5]. For completeness of presentation let us give its direct proof without using results of loc. cit.

Proof of Theorem 4.8. The above matrices M_k and numbers a_k coincide with those from (3.9) and (3.18) respectively constructed for recurrence relations (1.6) with $b = 0$, $n = l + 1$,

$$(k(k+l) + \lambda)a_k - \mu(k+l)a_{k-1} + \mu(k+1)a_{k+1} = 0; \quad (4.10)$$

here $k_{0+} = -1$. The matrices M_k are well-defined for all $k \in \mathbb{N}$, whenever $l \notin \mathbb{Z}_{<0}$. (If $l = 0$, then $k_{0+} = 0$, but the corresponding sequence a_k from (3.18) remains the same, as in (4.9), up to constant factor.) This together with Theorem 3.5 implies that the sequence (a_k) satisfies (4.10) for $k \geq 1$ and the series $E(z) = \sum_{k=0}^{+\infty} a_k z^k$ converges on \mathbb{C} . Therefore, $\mathcal{L}E = \text{const}$, and the latter constant is the left-hand side of the relation (4.10) corresponding to $k = 0$: that is, $\lambda a_0 + \mu a_1 = \xi_l(\lambda, \mu)$. This together with the uniqueness of an entire function E for which $\mathcal{L}E = \text{const}$ (Theorem 1.3) implies the statement of Theorem 4.8. \square

Theorem 4.9 *Let $n \notin \mathbb{Z}$, $\mu \neq 0$,*

$$S_m = \begin{pmatrix} 1 + \frac{\lambda - n + 2}{(1-m)(n-m-2)} & \frac{\mu^2(n-m-1)}{(1-m)(n-m-2)(n-m-3)} \\ 1 & 0 \end{pmatrix} \text{ for } m \geq 2,$$

$$T_m = S_m S_{m+1} \dots$$

Heun equation (1.1) has a solution holomorphic on \mathbb{C}^ , if and only if either $\xi_l(\lambda, \mu) = 0$, or*

$$(2 - n + \lambda)(4 - n)T_{2,11} - \mu^2(n - 2)T_{2,21} = 0. \quad (4.11)$$

Proof A solution of Heun equation holomorphic on \mathbb{C}^* exists if and only if some of the two statements of Proposition 4.7 holds. The second one, the existence of an entire solution is equivalent to the equation $\xi_l(\lambda, \mu) = 0$, by Theorem 4.8. Let us show that the first statement of Proposition 4.7, that is, equation (4.6) on the coefficients a_{-2} , a_{-1} of the backward solution of

recurrence relations (4.5) is equivalent to (4.11). To do this, let us recall the formulas for the sequence a_k (up to common constant factor), see (3.29):

$$\hat{c}_m = T_{m,21} = T_{m+1,11}, \quad \hat{c}_1 = T_{2,11},$$

$$\hat{a}_m = \frac{\hat{c}_m \mu^m}{(2-n)_{m+1}} = a_{-m}, \quad m \geq 1.$$

The sequence $(a_k)_{k \leq -1}$ satisfies recurrence relations (4.5) for $k \leq -2$, as in Subsection 3.3, and the series $\sum_{k \leq -1} a_k z^{-k}$ converges on \mathbb{C} : here we have rewritten the formulas from Subsection 3.3 for $b = 0$. One has

$$a_{-2} = \frac{\mu^2 T_{2,21}}{(2-n)(3-n)(4-n)}, \quad a_{-1} = \frac{\mu T_{2,11}}{(2-n)(3-n)},$$

by definition. Substituting the latter formulas and $l = n - 1$ to (4.6) yields (4.11). This together with Proposition 4.7 proves the theorem. \square

4.3 Double resonant subcase: $n, b \in \mathbb{Z}$

Recall that we study the existence of solution (4.1) of Heun equation of the type (1.1). In the case under consideration $b \in \mathbb{Z}$, and without loss of generality we can and will consider that $b = 0$. In this case a solution we are looking for is holomorphic on \mathbb{C}^* and presented by a Laurent series $E(z) = \sum_{k \in \mathbb{Z}} a_k z^k$ converging on \mathbb{C}^* . Recall that $l = n - 1$. Without loss of generality we will consider that $l \geq 0$. One can achieve this by applying the transformation

$$\diamond : E(z) \mapsto e^{\mu(z+z^{-1})} E(-z^{-1}),$$

which is an isomorphism of the solution space of equation (1.1) and equation

$$\mathcal{L}E = z^2 E'' + ((-l+1)z + \mu(1-z^2))E' + (\lambda + \mu(l-1)z)E = 0, \quad (4.12)$$

see [10, section 4, formula (39)]. It sends solutions of equation (1.1) holomorphic on \mathbb{C}^* onto solutions of equation (4.12) holomorphic on \mathbb{C}^* .

Theorem 4.10 *Let $l \in \mathbb{Z}$, $l \geq 0$, $\mu \neq 0$. Equation (1.1) with $n = l + 1$ has a solution holomorphic on \mathbb{C}^* , if and only if its monodromy is unipotent. This happens, if and only if equation (1.1) satisfies one of the two following statements:*

1) *either it has an entire solution, i.e., holomorphic on \mathbb{C} ; this holds if and only if the monodromy is trivial;*

2) or the corresponding equation (4.12) has a nontrivial polynomial solution.

In the case, when the parameters λ and μ are real and $\mu > 0$, statements 1) and 2) are incompatible: if statement 2) holds, then the monodromy is nontrivial (a unipotent Jordan cell).

Remark 4.11 The incompatibility of statements 1) and 2) for real parameter values was proved in [13, theorem 3.10]. It follows from our result on positivity of determinants of modified Bessel functions [13, theorem 1.3] and results of [11]. (Incompatibility for real parameters was proved for $\mu > 0$, but it holds whenever $\mu \neq 0$: cases $\mu > 0$ and $\mu < 0$ are symmetric and one is reduced to the other via appropriate transformation of the equation.) However as it will be shown below in Proposition 4.15, statements 1) and 2) hold simultaneously for an infinite set of *complex* parameter values already for $l = 1$.

Theorem 4.10 will be proved below. The sets of parameter values for which statements 1) or 2) hold were already described in [9, 10, 13]. The set of parameters corresponding to Heun equations (1.1) having entire solutions is given by equation $\xi_l(\lambda, \mu) = 0$, see Theorem 4.8. Let us recall the description of the parameters corresponding to equations (4.12) with polynomial solutions. To do this, consider the three-diagonal $l \times l$ -matrix

$$H = \begin{pmatrix} 0 & \mu & 0 & 0 & 0 & 0 \dots & 0 \\ \mu(l-1) & 1-l & 2\mu & 0 & 0 & \dots & 0 \\ 0 & \mu(l-2) & -2(l-2) & 3\mu & 0 & \dots & 0 \\ \dots & \dots & \dots & \dots & \dots & \dots & \dots \\ 0 & \dots & 0 & 0 & 2\mu & -2(l-2) & (l-1)\mu \\ 0 & \dots & 0 & 0 & 0 & \mu & 1-l \end{pmatrix} : \quad (4.13)$$

$$H_{ij} = 0 \text{ if } |i-j| \geq 2; H_{jj} = (1-j)(l-j+1); H_{j,j+1} = \mu j; H_{j,j-1} = \mu(l-j+1).$$

The matrix H belongs to the class of the so-called Abelian matrices that arise in different questions of mathematics and mathematical physics².

Theorem 4.12 [9, section 3] *A Heun equation (4.12) with $\mu \neq 0$ has a polynomial solution, if and only if $l \in \mathbb{N}$ and the three-diagonal matrix $H + \lambda Id$ has zero determinant.*

²Ильин, В.П.; Кuznetsov, Yu.I. *Three-diagonal matrices and their applications*. Moscow, Nauka, 1985.

Remark 4.13 Let us explain why a Heun equation (4.12) cannot have a polynomial solution for $l \notin \mathbb{N}$, $\mu \neq 0$. Indeed, the corresponding three-term relations are of the form (4.10) with l replaced by $-l$. For every $k \geq 1$ the coefficients at $a_{k\pm 1}$ in these relations are non-zero. Hence their solution cannot be a polynomial, and it is an infinite series.

Proof of Theorem 4.10. The monodromy of equation (1.1) has unit determinant, since $l \in \mathbb{Z}$ and by Proposition 4.1. Let equation (1.1) have a solution $E(z)$ holomorphic on \mathbb{C}^* . The latter solution is a monodromy eigenfunction with eigenvalue one. Hence, the other monodromy eigenvalue also equals one, by unimodularity of the monodromy. Conversely, let the monodromy be unipotent. Then it has an eigenfunction with eigenvalue one, and hence, the latter eigenfunction is a solution of equation (1.1) holomorphic on \mathbb{C}^* .

Now let us show that existence of a solution $E(z)$ holomorphic on \mathbb{C}^* is equivalent to the statement that one of the two statements 1) or 2) holds. Let the above solution $E = \sum_{k \in \mathbb{Z}} a_k z^k$ exist. Let us prove that one of the two statements 1) or 2) holds.

The Laurent series of the solution $E(z)$ converges on \mathbb{C}^* and the coefficients a_k satisfy recurrence relations (4.10). For $k = -l$ and $k = -1$ respectively these relations take the form

$$\lambda a_{-l} + \mu(1-l)a_{1-l} = 0, \quad (4.14)$$

$$(1-l+\lambda)a_{-1} - \mu(l-1)a_{-2} = 0. \quad (4.15)$$

In particular, they do not contain a_j , $j \notin \{-l, \dots, -1\}$. Therefore, given a solution holomorphic on \mathbb{C}^* of Heun equation (1.1), its Laurent coefficients a_k with $-l \leq k \leq -1$ should form a vector (a_{-l}, \dots, a_{-1}) satisfying equations (4.14), (4.15) and the $l-2$ recurrence equations (4.10) for intermediate $k = -l+1, \dots, -2$. In other terms, the latter vector should be in the kernel of the three-diagonal $l \times l$ -matrix \tilde{H} of equations (4.10) with $k = -1, \dots, -l$: its line number $-k$ consists of the coefficients of the k -th relation; the coefficient at a_{-j} stands at the column number j .

Proposition 4.14 *Let \tilde{H} be the latter matrix, and let H^t be the transposed matrix (4.13). One has*

$$\tilde{H} = Q(H^t + \lambda Id)Q^{-1}, \quad Q = \begin{pmatrix} 0 & 0 & 0 & \dots & 1 \\ 0 & \dots & 0 & -1 & 0 \\ \dots & 0 & 1 & 0 & 0 \\ \dots & \dots & \dots & \dots & \dots \\ (-1)^{l-1} & 0 & 0 & \dots & 0 \end{pmatrix}.$$

The statement of Proposition 4.14 can be checked immediately.

Case 1). **There exists a solution $E(z)$ of Heun equation (1.1) holomorphic on \mathbb{C}^* such that either $l = 0$ in (1.1), or $l \geq 1$ and $a_j = 0$ for all $j \in \{-l, \dots, -1\}$.** Then the series $\hat{E}(z) = \sum_{k \geq 0} a_k z^k$ is an entire solution, i.e., holomorphic on \mathbb{C} : it satisfies relations (4.10) for all $k \in \mathbb{Z}$. Indeed, relations (4.10) hold for all $k > 0$, by assumption. For $k < 0$ they do not contain a_j with $j \geq 0$, by (4.15), and hence, hold automatically, if we put $a_j = 0$ for all $j < 0$. Relation (4.10) for $k = 0$ takes the form $\lambda a_0 + \mu a_1 = 0$, and hence, does not contain a_{-1} and holds automatically for the series \hat{E} , as for E : for $l = 0$ this is obvious; for $l \geq 1$ this follows from the assumption that $a_{-1} = 0$ in E . A priori, it may happen that the series $\sum_{k=0}^{+\infty} a_k z^k$ is identically zero: in our assumptions, this holds exactly when $a_j = 0$ for every $j \geq -l$. In this case the function $\#E(z) = 2\omega z^{-(l+1)}E(z^{-1})$, which is also a solution of equation (1.1), is an entire solution linearly independent with E . It is known that if (1.1) has an entire solution and $l \in \mathbb{Z}_{\geq 0}$, then each solution of equation (1.1) is holomorphic on \mathbb{C}^* , and if $l \geq 1$, then its Laurent series does not contain monomials z^j , $j \in \{-l, \dots, -1\}$, see [11, lemma 3, statement 6]. Hence, the monodromy is trivial.

Let us prove the converse: if the monodromy of equation (1.1) is trivial, then $l \in \mathbb{Z}$ and equation (1.1) has an entire solution. Indeed, Heun equation (1.1) is analytically equivalent to the system of equations

$$\begin{cases} v' = \frac{1}{2i\omega z}u \\ u' = z^{-2}(-(lz + \mu(1 + z^2))u + \frac{z}{2i\omega}v) \end{cases}, \quad (4.16)$$

where $E(z) = e^{\mu z}v(z)$. The formal normal form at the origin of system (4.16) is the system

$$\begin{cases} \hat{v}' = 0 \\ \hat{u}' = -z^{-2}(lz + \mu)\hat{u} \end{cases}.$$

The monodromy matrix of system (4.16) written in a canonical sectorial solution base in appropriate sector is the product of three matrices: the monodromy $\text{diag}(1, e^{-2\pi i l})$ of the formal normal form and two unipotent matrices, one upper-triangular and the other lower-triangular (the inverse to the Stokes matrices). See [18, formulas (2.15) and (3.2)] for more detail. The latter product is identity, if and only if $l \in \mathbb{Z}$ and the Stokes matrices are trivial, as in loc. cit. Triviality of the Stokes matrices is equivalent to the existence of a variable change $(v, u) = H(z)(\hat{v}, \hat{u})$ transforming system (4.16) to its formal normal form, where $H : \mathbb{C} \rightarrow GL_2(\mathbb{C})$ is a holomorphic mapping, $H(0) = Id$, as in loc. cit. The formal normal form has an obvious holomorphic solution $(\hat{v}(z), \hat{u}(z)) \equiv (1, 0)$. Its image under the latter

variable change is a solution $(v(z), u(z))$ of system (4.16) holomorphic on \mathbb{C} . Therefore, the corresponding solution $E(z) = e^{\mu z}v(z)$ of Heun equation (1.1) is also holomorphic on \mathbb{C} . The converse statement is proved.

Case 2): $l \geq 1$ and there exists a solution of Heun equation (1.1) holomorphic on \mathbb{C}^* with $a_k \neq 0$ for some $k \in \{-l, \dots, -1\}$. In this case the three-diagonal matrix \tilde{H} of relations (4.10) with $k = -l, \dots, -1$ has nonzero kernel containing the vector (a_{-1}, \dots, a_{-l}) (see the above arguments), and hence, zero determinant. Thus, the matrix $H + \lambda Id$, whose transposed is conjugated to \tilde{H} (Proposition 4.14), also has zero determinant. Therefore, equation (4.12) has a polynomial solution (Theorem 4.12). It is known that if the parameters λ and μ are real, $\mu > 0$ and equation (4.12) has a polynomial solution, then the corresponding equation (1.1) does not have entire solution [13, theorem 3.10]: cases 1) and 2) are incompatible. Therefore, if $\lambda, \mu \in \mathbb{R}$, $\mu > 0$ and case 2) takes place, then the monodromy is non-trivial: it is a unipotent Jordan cell,

Let us now prove the converse: each statement 1) or 2) implies the existence of a solution $E(z)$ holomorphic on \mathbb{C}^* of equation (1.1). For statement 1) this is obvious: the solution from 1) is even holomorphic on \mathbb{C} . Let statement 2) hold: equation (4.12) have a polynomial solution \tilde{E} . Let \diamond be the transformation from the beginning of the subsection, which is an isomorphism between the solution spaces of equations (1.1) and (4.12). The function $E = \diamond^{-1}\tilde{E}$ is a solution of equation (1.1) holomorphic on \mathbb{C}^* , since \diamond is an isomorphism of the space of functions holomorphic on \mathbb{C}^* . Theorem 4.10 is proved. \square

To show that statements 1) and 2) of Theorem 4.10 can be compatible, let us recall the definition of modified Bessel functions $I_k(x)$ of the first kind: they are the Laurent coefficients of the family of analytic functions

$$g_x(z) = e^{\frac{x}{2}(z+\frac{1}{z})} = \sum_{k=-\infty}^{+\infty} I_k(x)z^k;$$

$$I_k(x) = i^{-k} J_k(ix),$$

where J_k is the usual k -th Bessel function. Recall that each function J_k of complex variable x has infinite number of zeros (roots), all of them are real (non-zero for $k = 0$) and symmetric: that is, if x is a root of the function J_k , then so is $-x$. This follows from their infinite product decomposition, see [24, p.235]:

$$J_k(z) = \frac{1}{k!} \left(\frac{z}{2}\right)^k \prod_{j \geq 1} \left(1 - \frac{z^2}{x_{k,j}^2}\right) \text{ for } k \geq 0,$$

where $x_{k,1} < x_{k,2}, \dots \in \mathbb{R}_+$ are the positive roots of the function J_k . This implies that each function I_k has infinite number of roots, namely, $\pm ix_{k,j}$ (and the additional root 0, if $k \neq 0$).

Proposition 4.15 *Let $l = 1$, $n = l + 1 = 2$. Heun equation (4.12) has a polynomial solution, if and only if $\lambda = 0$: the latter solution is a constant. For $\lambda = 0$ equation (1.1) has an entire solution, if and only if $I_1(2\mu) = 0$, i.e., $\mu = \pm i \frac{x_{1,j}}{2}$ for some j . Thus, for $l = 1$, $n = l + 1 = 2$, $(\lambda, \mu) = (0, \pm i \frac{x_{1,j}}{2})$ equation (4.12) has a constant solution and equation (1.1) has an entire solution.*

Proof The first statement of the proposition follows from Theorem 4.12: the corresponding three-diagonal matrix for $l = 1$ is the scalar number λ . Note that a polynomial solution of equation (4.12) has degree at most $l - 1$, as was shown in [9, section 3]. Hence, in our case it is a constant, which can be normalized to be $\hat{E}(z) \equiv 1$. Its image $E = \diamond \hat{E} = e^{\mu(z + \frac{1}{z})}$ under the transformation \diamond from the beginning of the subsection is a solution of equation (1.1). The Laurent coefficient of the function $E(z)$ at the power z^{-1} equals $I_1(2\mu)$, by definition. If it vanishes, then equation (1.1) has an entire solution, as in the above proof of Theorem 4.10, case 1). If it does not vanish, then (1.1) has no entire solution, as was mentioned at the same place, see [11, lemma 3, statement 6]. This proves the proposition. \square

5 Applications to phase-lock areas in the model of Josephson effect

5.1 Phase-lock areas in Josephson effect: brief geometric description and plan of the section

Here we apply the above results to the family of nonlinear equations (1.16):

$$\dot{\phi} = \frac{d\phi}{dt} = -\sin \phi + B + A \cos \omega t, \quad A, \omega > 0, \quad B \geq 0. \quad (5.1)$$

We fix an arbitrary $\omega > 0$ and consider family (5.1) depending on two variable parameters (B, A) . The variable change $\tau = \omega t$ transforms (5.1) to differential equation (1.17) on the two-torus $\mathbb{T}^2 = S^1 \times S^1$ with coordinates $(\phi, \tau) \in \mathbb{R}^2 / 2\pi\mathbb{Z}^2$. Its solutions are tangent to the vector field

$$\begin{cases} \dot{\phi} = -\frac{\sin \phi}{\omega} + l + 2\mu \cos \tau, & l = \frac{B}{\omega}, \quad \mu = \frac{A}{2\omega} \\ \dot{\tau} = 1 \end{cases} \quad (5.2)$$

on the torus. The *rotation number* of the equation (5.1) is, by definition, the rotation number of the flow of the field (5.2), see [1, p. 104]. It is a function $\rho(B, A)$ of the parameters:

$$\rho(B, A; \omega) = \lim_{k \rightarrow +\infty} \frac{\phi(2\pi k)}{k}.$$

Here $\phi(\tau)$ is a general solution of the first equation of system (1.18), whose parameter is the initial condition at $\tau = 0$. Recall that the rotation number does not depend on the choice of the initial condition [1, p. 104].

We consider the B -axis as the *abscissa*, and the A -axis as the *ordinate*.

Definition 5.1 (cf. [18, definition 1.1]) The r -th *phase-lock area* is the level set $\{(B, A) \mid \rho(B, A) = r\} \subset \mathbb{R}^2$, provided it has a non-empty interior.

Remark 5.2 : phase-lock areas and Arnold tongues. The behavior of phase-lock areas for small A demonstrates the effect discovered by V.I. Arnold [1, p. 110]. That is why the phase-lock areas became “Arnold tongues”, see [18, definition 1.1].

Recall that the rotation number of equation (5.1) has the physical meaning of the mean voltage over a long time interval. The segments in which the phase-lock areas intersect horizontal lines correspond to the Shapiro steps on the voltage-current characteristic [4].

It has been shown earlier that

- the phase-lock areas exist only for integer values of the rotation number (a “quantization effect” observed in [7] and later also proved in [20, 19]);

- the boundary of each phase-lock area $\{\rho = r\}$ consists of two analytic curves, which are the graphs of two functions $B = g_{r,\pm}(A)$ (see [8]; this fact was later explained by A.V.Klimenko via symmetry, see [22]);

- the latter functions have Bessel asymptotics (observed and proved on physical level in [26], see also [23, chapter 5], [3, section 11.1], [6]; proved mathematically in [22]).

- each phase-lock area is an infinite chain of bounded domains going to infinity in the vertical direction, in this chain each two subsequent domains are separated by one point. Those of these points that lie in the horizontal B -axis are calculated explicitly, and we call them *exceptional*. The other separation points, lie outside the horizontal B -axis and are called the *adjacency points* (or briefly *adjacencies*), see Fig.1.

In the present section we obtain functional equations satisfied by non-integer level curves $\{\rho(B, A) = r\}$ of the rotation number (Subsection 5.4)

and the boundaries of the phase-lock areas (Subsection 5.5) using relation of equation (5.1) to Heun equation (1.1) (recalled in Subsection 5.3) and the results on monodromy eigenvalues of Heun equations from the previous section. The above-mentioned functional equations will be written in the complement to the adjacencies and the discriminant set (with fixed ω) of the parameter values corresponding to the existence of a polynomial solution of equation (4.12). Afterwards we discuss open problems and possible approaches to them using the above-mentioned results on Heun equations.

Symmetries of the phase-lock area portrait are presented in the next subsection.

5.2 Symmetries and the portraits of the phase-lock areas

It is known that

- for every $r \in \mathbb{Z}$ the r -th phase-lock area is symmetric to the $-r$ -th one with respect to the vertical A -axis;
- every phase-lock area is symmetric with respect to the horizontal B -axis.

These symmetry statements follow the fact that the transformations $(\phi, \tau) \mapsto (-\phi, \tau + \pi)$ $(\phi, \tau) \mapsto (\phi, \tau + \pi)$ send system (5.2) to the system of the same form, where B is changed to $-B$ in the first case and A is changed to $-A$ in the second case.

In what follows we present pictures of the phase-lock area portraits. Taking into account the above symmetries, it is enough to present only the parts of portraits lying in the upper half-plane.

5.3 Transformation to double confluent Heun equations. The boundary points of the phase-lock areas corresponding to entire and polynomial solutions of the Heun equation

Set

$$\Phi = e^{i\phi}, \quad z = e^{i\tau} = e^{i\omega t}. \quad (5.3)$$

Considering equation (5.1) with complex time t we get that transformation (5.3) sends it to the Riccati equation

$$\frac{d\Phi}{dz} = z^{-2}((lz + \mu(z^2 + 1))\Phi - \frac{z}{2i\omega}(\Phi^2 - 1)).$$

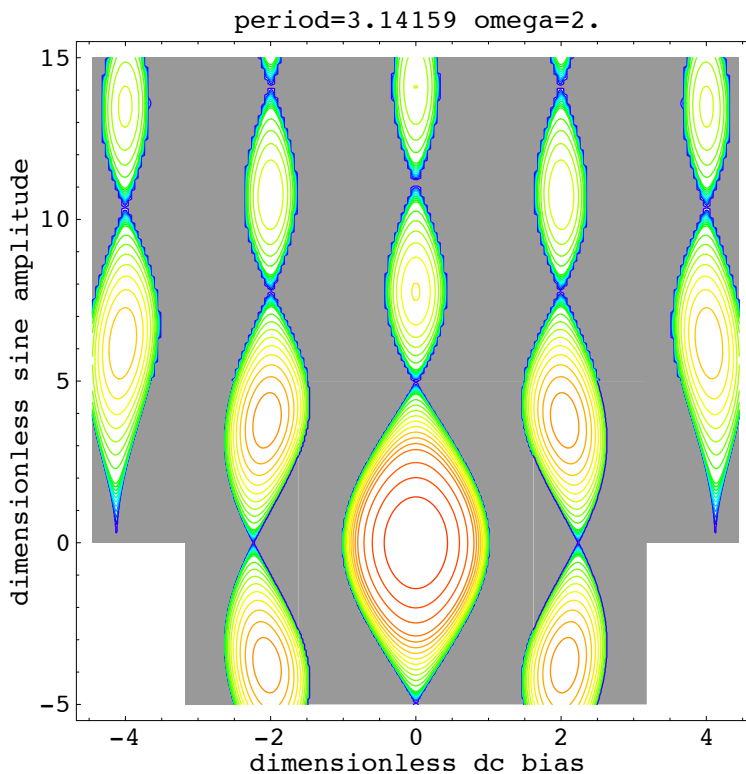


Figure 1: Phase-lock areas and their adjacencies for $\omega = 2$. The abscissa is B , the ordinate is A .

This equation is the projectivization of the following linear equation in vector function (u, v) with $\Phi = \frac{v}{u}$, see [13, subsection 3.2]:

$$\begin{cases} v' = \frac{1}{2i\omega z} u \\ u' = z^{-2}(-lz + \mu(1 + z^2))u + \frac{z}{2i\omega} v \end{cases} \quad (5.4)$$

The above-described reduction to a system of linear equations was earlier obtained in slightly different terms in [5, 16, 10, 20]. It is easy to check that a function $v(z)$ is the component of a solution of system (5.4), if and only if the function $E(z) = e^{\mu z} v(z)$ satisfies equation (1.1) with $n = l + 1$ and

$$\lambda = \left(\frac{1}{2\omega}\right)^2 - \mu^2. \quad (5.5)$$

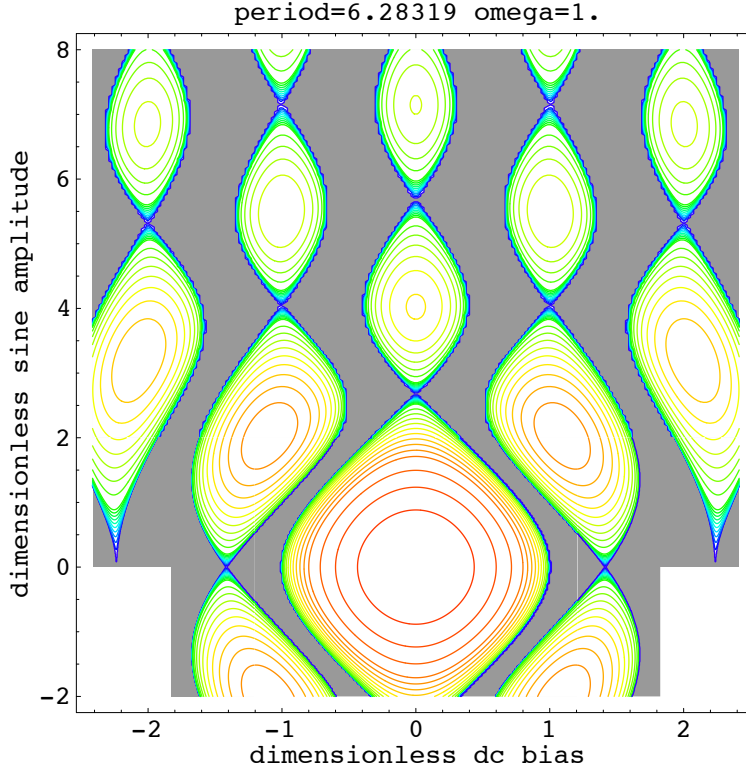


Figure 2: Phase-lock areas and their adjacencies for $\omega = 1$. The abscissa is B , the ordinate is A .

The next fact has important applications to the problems discussed in the paper.

Proposition 5.3 *The rotation number function is a real-analytic function of the parameters (B, A) on the set $U = \rho^{-1}(\mathbb{R} \setminus \mathbb{Z})$, which is the complement to the union of the phase-lock areas of system (5.2). Moreover, its restriction to U is an analytic submersion $U \rightarrow \mathbb{R} \setminus \mathbb{Z}$ inducing an analytic fibration by curves*

$$L_r = \{(B, A) \in \mathbb{R}^2 \mid \rho(B, A) = r\},$$

and these curves are graphs of analytic functions in the variable A defined for all $A \in \mathbb{R}$.

Proof The variable change (5.3) reducing family of equations (5.1) on the torus to the Riccati equation sends the space circle with the coordinate ϕ to

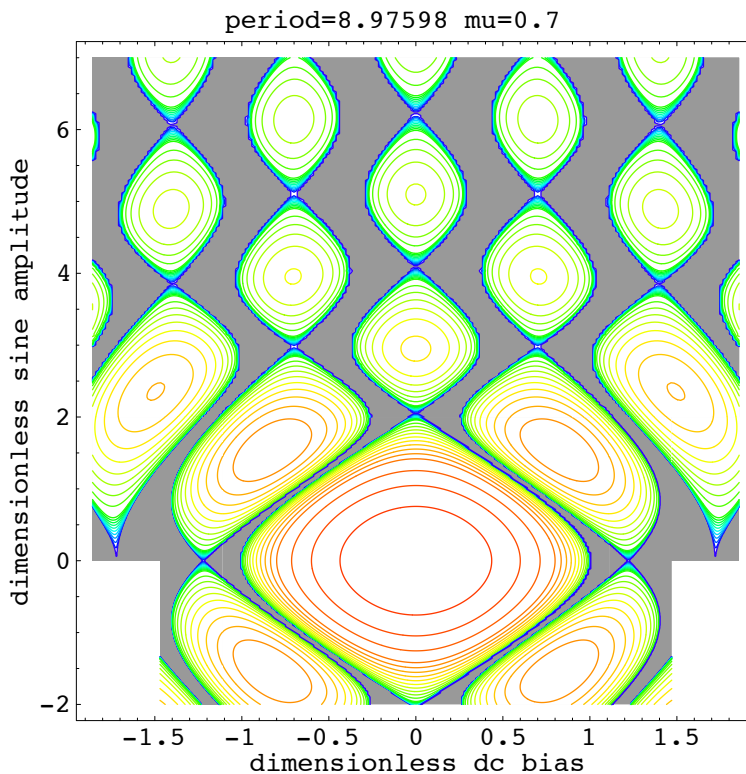


Figure 3: Phase-lock areas and their adjacencies for $\omega = 0.7$. Figure taken from [10, p. 331].

the unit circle in the Riemann sphere with the coordinate Φ . The time 2π flow mapping (i.e., the first return mapping) of the corresponding family of vector fields (5.2) on the torus is the restriction to the unit circle in the Riemann sphere of a transformation from the Möbius group: the monodromy transformation of the Riccati equation. That is, the restriction to the unit circle of a conformal automorphism of the unit disk. The rotation number function ρ considered as a function on the group $Aut(D_1) \simeq PSL_2(\mathbb{R})$ is analytic on the set of transformations analytically conjugated to nontrivial rotations. (Recall that these transformations are called *elliptic*.) This follows from the fact that each elliptic transformation of the unit disk has a fixed point inside the disk, its multiplier depends analytically on the transformation and equals $e^{2\pi i\rho}$. The set of elliptic transformations coincides with the complement of the subset in $Aut(D_1)$ consisting of transformations

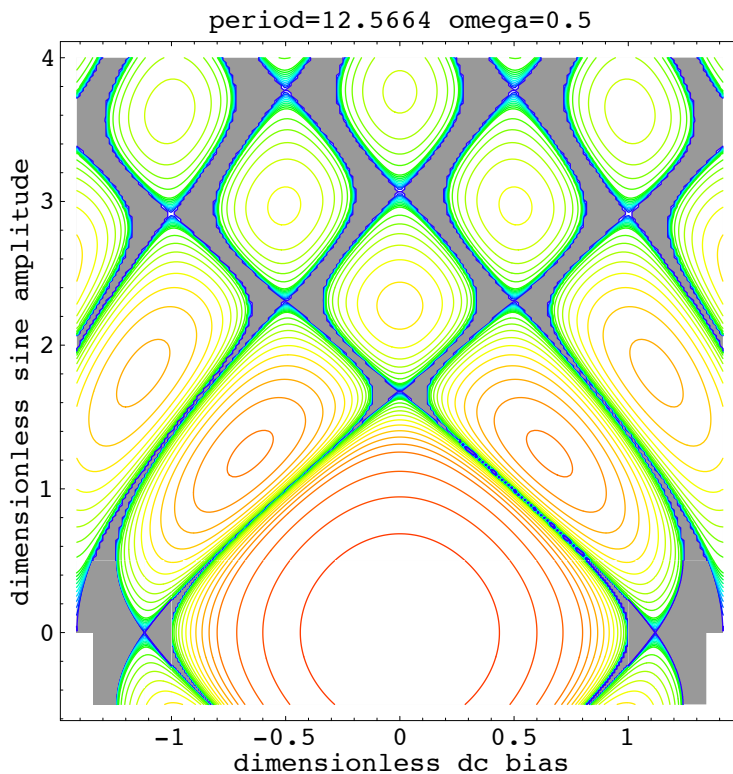


Figure 4: Phase-lock areas and their adjacencies for $\omega = 0.5$.

whose restrictions to $S^1 = \partial D_1$ have integer rotation number. The points of the set U correspond to non-integer values of the rotation number, and hence, to Riccati equation with elliptic monodromy. This proves analyticity of the rotation number function on the set U .

Now let us prove the second statement of the proposition: the restriction $\rho|_U$ is a submersion, and each its level set L_r is the graph $\{B = g_r(A)\}$ of a function g_r analytic on \mathbb{R} . Indeed, let $r \notin \mathbb{Z}$. The set L_r is an analytic curve, by analyticity of the rotation number function on U (the first statement of the proposition). Let us prove that it is a graph of function. To do this, let us check that $\frac{\partial \rho}{\partial B}(B, A) > 0$ for every $(B, A) \in U$, and hence, one can apply the Implicit Function Theorem to the function ρ . The time 2π flow mapping of the corresponding vector field (5.2) has a non-integer rotation number, and hence, is analytically conjugated to the rotation by angle $2\pi\rho_0$, $\rho_0 = \rho(B, A)$, as was shown above. Perturbation of the time 2π flow mapping via increasing

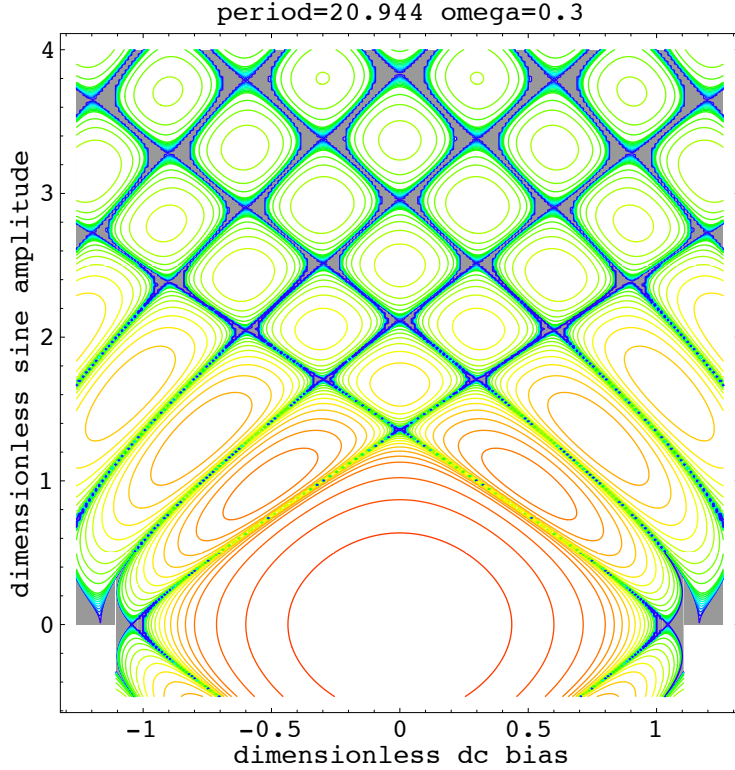


Figure 5: Phase-lock areas and their adjacencies for $\omega = 0.3$.

B by δB is conjugated to a perturbed rotation, which is the composition of the above rotation with a diffeomorphism h close to identity, the difference $h(x) - x > 0$ being uniformly bounded from below by $c\delta B$, $c > 0$. The latter perturbed rotation has rotation number bounded from below by $\rho_0 + \frac{c}{2\pi}\delta B$, which follows from the definition of the rotation number. This implies the above statement on positivity of the derivative in B of the rotation number function. Thus, the mapping $\rho|_U$ is an analytic submersion, and the set L_r with $r \notin \mathbb{Z}$ is the graph of an analytic function $g_r(A)$. Now it remains to show that the function g_r is analytic on the whole line \mathbb{R} , i.e., the curve L_r does not go to infinity in the horizontal direction so that the ordinate A remains bounded. This follows from the fact that the curve L_r is contained in the domain between the phase-lock areas with the rotation numbers $[r]$ and $[r] + 1$, and the abscissa B is uniformly bounded on this domain. The latter statement follows from the fact that each phase-lock area $\{\rho = l\}$

tends to infinity in the vertical direction approaching the line $\{B = l\omega\}$: its boundary consists of graphs of two functions $\{B = g_{l,\pm}(A)\}$ defined on \mathbb{R} and having Bessel asymptotics at infinity [22]. This proves the proposition. \square

Remark 5.4 The adjacencies of the phase-lock areas of family of equation (5.1) are characterized by the condition that the corresponding period 2π flow mapping (i.e., the Poincaré mapping) of vector field from family (5.2) is the identity, see [18, proposition 2.2]. It was shown in [10, lemmas 3, 4] that if a point (B, A) corresponds to a Heun equation (1.1) with an entire solution, then the Poincaré mapping corresponding to this point is the identity, and hence, it is an adjacency. The complete result is the following.

Theorem 5.5 (see [13, theorems 3.3, 3.5]). *For every $\omega > 0$, $l \geq 0$ a point $(B, A) \in \mathbb{R}^2$ with $A \geq 0$, $B = l\omega$ is an adjacency for family of equations (5.1), if and only if $l \in \mathbb{Z}$ and the corresponding equation (1.1) with $n = l + 1$ and μ, λ as in (5.2) and (5.5) has a nontrivial entire solution, i.e., if and only if equation $\xi_l(\lambda, \mu) = 0$ holds; ξ_l is the same, as in (4.9).*

In what follows we will use the next result.

Proposition 5.6 *Let $\omega > 0$, $(B, A) \in \mathbb{R}^2$, and let $\rho = \rho(B, A)$ denote the corresponding rotation number. Let (B, A) do not lie in the interior of a phase-lock area: it may lie either in the complement of the union of phase-lock areas, or in its boundary. Then the monodromy operator of the corresponding Heun equation (1.1) with $n = l + 1$, $l = \frac{B}{\omega}$ has eigenvalues $e^{\pi i(\rho-l)}$ and $e^{-\pi i(\rho+l)}$.*

Proof Let λ_1, λ_2 be the eigenvalues of the above monodromy operator of Heun equation. The point (B, A) does not lie in the interior of a phase-lock area. If $r = \rho(B, A) \notin \mathbb{Z}$, then the monodromy of the corresponding Riccati equation is an elliptic Möbius transformation conformally conjugated to the rotation by angle $2\pi r$. Therefore, it has two fixed points with multipliers $e^{\pm 2\pi i r}$. The latter multipliers are ratios of the eigenvalues λ_j , and without loss of generality we consider that $\frac{\lambda_1}{\lambda_2} = e^{2\pi i r}$. On the other hand, $\lambda_1 \lambda_2 = e^{-2\pi i l}$, by Proposition 4.1. This implies that the eigenvalues under question are equal to $\pm e^{\pi i(r-l)}, \pm e^{-\pi i(r+l)}$. In the case, when $r \in \mathbb{Z}$, the point (B, A) lies in the boundary of a phase-lock area and the monodromy of the Riccati equation is either parabolic, or identity. The corresponding monodromy of the Heun equation has multiple eigenvalue given by same (now coinciding)

formulas. The correct sign should be the same for all the points (B, A) in the complement of the parameter plane to the union of the interiors of phase-lock areas, by path connectivity of the latter complement and continuity of the rotation number function. Indeed, the phase-lock areas are disjoint closed subsets in \mathbb{R}^2 , the complement of each of them consists of two connected components. The interior of each phase-lock area is disconnected: one can pass from one its side to the other via any adjacency. The sign is “+” at each adjacency, since the corresponding monodromy is trivial (Remark 5.4). Hence, it is “+” everywhere. This proves the proposition. \square

Corollary 5.7 *The pair of eigenvalues from Proposition 5.6 corresponding to a given point (B, A) is the same for all other points (B, A') with $\rho(B, A') \equiv \pm\rho(B, A) \pmod{2\mathbb{Z}}$.*

Theorem 5.8 *Let $\omega > 0$, $(B, A) \in \mathbb{R}^2$, $B, A > 0$, $l = \frac{B}{\omega}$, $\mu = \frac{A}{2\omega}$, $\lambda = \frac{1}{4\omega^2} - \mu^2$, $\rho = \rho(B, A)$. The double confluent Heun equation (4.12) corresponding to the latter λ , μ and l has a polynomial solution, if and only if $l, \rho \in \mathbb{Z}$, $0 \leq \rho \equiv l \pmod{2\mathbb{Z}}$ and $\rho \leq l$, and in addition, the point (B, A) lies in the boundary of the phase-lock area number ρ and is not an adjacency. In other terms, the points $(B, A) \in \mathbb{R}_+^2$ corresponding to equations (4.12) with polynomial solutions lie in boundaries of phase-lock areas and are exactly their intersection points with the lines $l = \frac{B}{\omega} \equiv \rho \pmod{2\mathbb{Z}}$, $0 \leq \rho \leq l$, except for the adjacencies, see Fig. 6.*

Proof It is known that every point $(B, A) \in \mathbb{R}_+^2$ corresponding to equation (4.12) with a polynomial solution lies in the boundary of the phase-lock area number ρ , and one has $l, \rho \in \mathbb{Z}$, $l = \frac{B}{\omega} \equiv \rho \pmod{2\mathbb{Z}}$, $0 \leq \rho \leq l$ [9, corollary 6 and theorem 5]. In addition, (B, A) is not an adjacency [13, theorem 3.10]. Let us prove the converse: if (B, A) satisfy all the latter statements, then the corresponding equation (4.12) has a polynomial solution. Indeed, if $(B, A) \in \mathbb{R}_+^2$ lies in the boundary of the phase-lock area number ρ , $l \in \mathbb{Z}$ and $\rho \equiv l \pmod{2\mathbb{Z}}$, then the monodromy of Heun equation (1.1) is unipotent, by Proposition 5.6: the corresponding eigenvalues are equal to $e^{-\pi i(\rho+l)} = 1$. Let us now suppose that (B, A) is not an adjacency, or equivalently, equation (1.1) does not have an entire solution. Then equation (4.12) has a polynomial solution, by Theorem 4.10. Theorem 5.8 is proved. \square

5.4 Equation on non-integer level sets of rotation number

Recall that in the classical Arnold family of circle diffeomorphisms the phase-lock areas (i.e., the Arnold tongues) exist exactly for the rational values

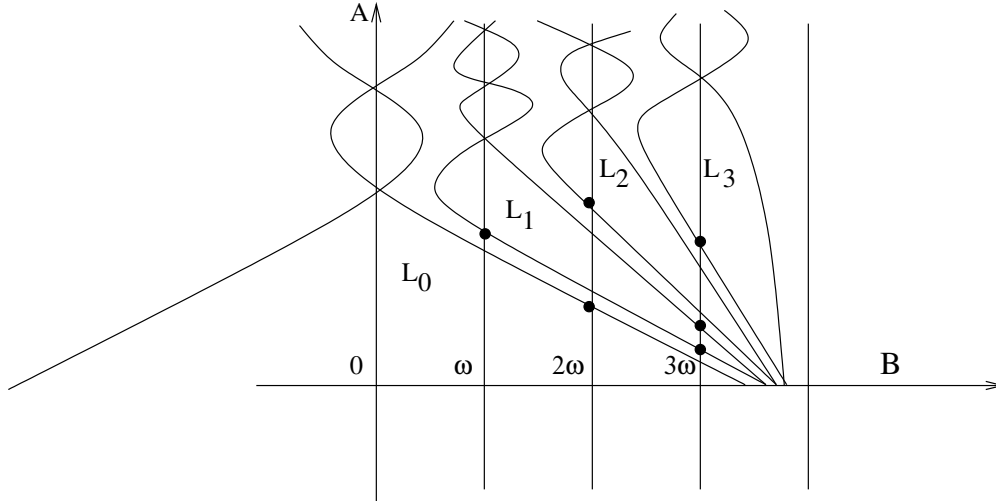


Figure 6: Approximate phase-lock areas for $\omega \simeq 0.27$; the marked points correspond to equations (4.12) with polynomial solutions.

of the rotation number. In family (5.1) we have the quantization effect mentioned in the Subsection 5.1: phase-lock areas exist only for integer values of the rotation number. Therefore, in our case the rational non-integer values of the rotation number do not differ from the irrational values.

Recall that $L_r = \{(B, A) \in \mathbb{R}^2 \mid \rho(B, A) = r\}$, and for $r \notin \mathbb{Z}$ this is the graph $\{B = g_r(A)\}$ of an analytic function (Proposition 5.3). For given $\omega > 0$ and $r > 0$ set

$$L_{\langle r \rangle} = \sqcup_{v \equiv \pm r \pmod{2\mathbb{Z}}} L_v.$$

Remark 5.9 Our goal is to describe the sets L_r for $r \notin \mathbb{Z}$ by analytic equations in terms of the monodromy eigenvalues of Heun equations, by using their expressions $e^{\pi i(\pm\rho-l)}$ via the rotation number function (Proposition 5.6). The latter pair of eigenvalues is in a one-to-one correspondence with the value $\pm\rho \pmod{2\mathbb{Z}}$. Therefore, the pair of eigenvalues corresponding to a given value r of the rotation number function coincides with all the other pairs corresponding to the values $r' \equiv \pm r \pmod{2\mathbb{Z}}$, see Corollary 5.7. Our methods allows to describe the union $L_{\langle r \rangle}$ by analytic equation, and not each individual level set L_r separately.

We consider the case, when $r \notin \mathbb{Z}$. Let us write down analytic equations

defining the set $L_{\langle r \rangle}$ in the complement $\mathbb{R}^2 \setminus \Sigma_{\langle r \rangle}$, where

$$\Sigma_{\langle r \rangle} = \cup_{\pm} \{(B, A) \in \mathbb{R}^2 \mid l = \frac{B}{\omega} \equiv \pm r \pmod{2\mathbb{Z}}\}. \quad (5.6)$$

For every $(B, A) \in L_{\langle r \rangle}$ the corresponding Heun equation (1.1) has a monodromy eigenfunction of the type

$$E(z) = z^b \sum_{k \in \mathbb{Z}} a_k z^k, \quad b = \frac{r-l}{2}, \quad l = \frac{B}{\omega},$$

by Proposition 5.6. One has $b, b+l \notin \mathbb{Z}$, if $(B, A) \notin \Sigma_{\langle r \rangle}$. Therefore, the analytic subset $L_{\langle r \rangle} \setminus \Sigma_{\langle r \rangle} \subset (\mathbb{R}^2 \setminus \Sigma_{\langle r \rangle})$ is described by equation (4.4). Let us write it down explicitly. The corresponding matrices M_k, R_k, S_m, T_m , see (3.9) and (3.23) have the form

$$M_k = \begin{pmatrix} 1 + \frac{\lambda}{(k+\frac{r}{2})^2 - \frac{l^2}{4}} & \frac{\mu^2}{(k+\frac{r}{2})^2 - \frac{l^2}{4}} \\ 1 & 0 \end{pmatrix}, \quad R_k = M_k M_{k+1} \dots,$$

$$S_m = \begin{pmatrix} 1 + \frac{\lambda-l+1}{(\frac{r-l}{2}-m+1)(\frac{r+l}{2}-m-1)} & \frac{\mu^2(\frac{r+l}{2}-m)}{(\frac{r-l}{2}-m+1)(\frac{r+l}{2}-m-1)(\frac{r+l}{2}-m-2)} \\ 1 & 0 \end{pmatrix},$$

$$T_m = S_m S_{m+1} \dots$$

Theorem 5.10 *Let $\omega > 0$, $r \in \mathbb{R}$, $r \notin \mathbb{Z}$. The set $L_{\langle r \rangle} \cap (\mathbb{R}^2 \setminus \Sigma_{\langle r \rangle})$ is defined by the following equation in the variables $(B, A) \in \mathbb{R}^2 \setminus \Sigma_{\langle r \rangle}$, where $B = l\omega$, $A = 2\mu$, $\lambda + \mu^2 = \frac{1}{4\omega^2}$:*

$$\left(\frac{r-l}{2} + 1\right)\left(\frac{r+l}{2} - 1\right)R_{1,11}T_{0,11} + \mu^2 R_{1,21}T_{0,21} = 0. \quad (5.7)$$

Proof A point $(B, A) \in \mathbb{R}^2 \setminus \Sigma_{\langle r \rangle}$ is contained in $L_{\langle r \rangle}$, if and only if $\rho = \rho(A, B) \equiv \pm r \pmod{2\mathbb{Z}}$. Or equivalently, some of the corresponding monodromy eigenvalues $e^{\pi i(\pm \rho - l)}$ equals $e^{2\pi i b} = e^{\pi i(r-l)}$. The latter statement is equivalent to (5.7), by Theorem 4.3 and since $b, b+l \notin \mathbb{Z}$. This proves Theorem 5.10. \square

5.5 Description of boundaries of phase-lock areas

Proposition 5.11 *A point in the parameter space of equation (5.1) lies in the boundary of a phase-lock area, if and only if the monodromy of the corresponding Heun equation (1.1) is parabolic: has multiple eigenvalue.*

Proof The point under question lies in the boundary of a phase-lock area, if and only if the flow mapping of the vector field (5.2) for the period 2π (restricted to the coordinate ϕ -circle) is parabolic: has a fixed point with unit derivative. The period mapping is the restriction to the unit circle of the monodromy of the corresponding Riccati equation: the projectivized monodromy. Parabolicity of the projectivization of a two-dimensional linear operator is equivalent to its own parabolicity. The proposition is proved. \square

Proposition 5.12 *Let a Heun equation (1.1) have a parabolic monodromy. Then the monodromy either has Jordan cell type, or is the identity.*

Proof The monodromy matrix is the product of the formal monodromy matrix $\text{diag}(1, e^{-2\pi in})$ and a pair of unipotent matrices: the inverse to the Stokes matrices at 0, cf. [18, formulas (2.15) and (3.2)]. If the monodromy of a Heun equation (1.1) is parabolic but not a Jordan cell, then it is a multiplication by scalar number. If the monodromy is scalar, then the Stokes matrices are trivial, and the monodromy coincides with the formal one, see [18, proof of lemma 3.3]. Hence, both monodromies are scalar and given by the above diagonal matrix with unit eigenvalue. Thus, they are trivial. The proposition is proved. \square

The condition saying that the monodromy has multiple eigenvalue is equivalent to the statement that it has eigenvalue $\pm e^{-\pi il}$, by Proposition 4.1. This is equivalent to the statement that there exists a multivalued solution $z^b \sum_{k \in \mathbb{Z}} a_k z^k$ of Heun equation with $b \in \{-\frac{l}{2}, -\frac{l+1}{2}\}$: a monodromy eigenfunction with the above eigenvalue. The corresponding parameter set of Heun equations (1.1) for $b \notin \mathbb{Z}$ will be described below (Cases 1 and 2) by using the following proposition. Afterwards we immediately obtain the description of boundaries of phase-lock areas.

Proposition 5.13 *Let a Heun equation (1.1) have a Jordan cell monodromy. Then its eigenfunction is either invariant, or anti-invariant under the involution $\#$:*

$$(\#E)(z) = 2\omega z^{-l-1}(E'(z^{-1}) - \mu E(z^{-1})).$$

The proposition follows from the fact that the involution $\#$ sends monodromy eigenfunctions to eigenfunctions (Proposition 4.2).

Case 1: $l \notin 2\mathbb{Z}$, $b = -\frac{l}{2}$: **the monodromy eigenvalue equals $e^{-\pi il} \neq 1$.** Then the monodromy operator of Heun equation (1.1) is a

Jordan cell, by Proposition 5.12. Consider the matrices

$$M_k = \begin{pmatrix} 1 + \frac{\lambda}{k^2 - \frac{l^2}{4}} & \frac{\mu^2}{k^2 - \frac{l^2}{4}} \\ 1 & 0 \end{pmatrix}, \quad R_k = M_k M_{k+1} \dots \quad (5.8)$$

Theorem 5.14 *Let $\lambda + \mu^2 = \frac{1}{4\omega^2}$, $\omega, \mu \neq 0$, $n = l + 1$, $l \notin 2\mathbb{Z}$. The monodromy operator of the corresponding Heun equation (1.1) has eigenvalue $e^{-\pi il}$, if and only if*

$$R_{0,21} \pm \omega l (R_{0,21} - R_{0,11}) = 0. \quad (5.9)$$

with some choice of sign.

Proof The corresponding eigenfunction E has the form

$$E(z) = z^{-\frac{l}{2}} f(z), \quad f(z) = \sum_{k \in \mathbb{Z}} a_k z^k \text{ is holomorphic on } \mathbb{C}^*. \quad (5.10)$$

Equation (1.1) is equivalent to recurrence equations (1.6) with $b = -\frac{l}{2}$:

$$(k^2 - \frac{l^2}{4} + \lambda)a_k - \mu(k + \frac{l}{2})a_{k-1} + \mu(k - \frac{l}{2} + 1)a_{k+1} = 0. \quad (5.11)$$

The series $f(z)$ should converge on \mathbb{C}^* . The above matrices M_k and R_k coincide with those constructed in (3.9), and they are well-defined for all $k \in \mathbb{Z}$. Therefore, the coefficients a_k , $k \geq 0$ are given by formulas (3.12) up to common constant factor, by Theorems 1.10 and 3.4:

$$a_0 = -\frac{2}{l} R_{0,21}, \quad a_{-1} = \mu^{-1} R_{0,11}. \quad (5.12)$$

Now we will use the condition of (anti-) invariance $\#E = \pm E$ (Proposition 5.13), which takes the form

$$\sum_{k \in \mathbb{Z}} a_k z^{k - \frac{l}{2}} = \pm 2\omega \left(\sum_{k \in \mathbb{Z}} (k - \frac{l}{2}) a_k z^{-k - \frac{l}{2}} - \mu \sum_{k \in \mathbb{Z}} a_k z^{-\frac{l}{2} - k - 1} \right),$$

or equivalently,

$$\sum a_k z^k = \pm 2\omega \left(\sum (k - \frac{l}{2}) a_k z^{-k} - \mu \sum a_k z^{-k-1} \right). \quad (5.13)$$

The free (zero power) term of the latter equation is equivalent to the relation

$$(1 \pm l\omega)a_0 \pm 2\omega\mu a_{-1} = 0, \quad (5.14)$$

which is in its turn equivalent to (5.9), by (5.12). Therefore, existence of the above solution E implies (5.9).

Let us prove the converse: each equation (5.9) implies the existence of a solution (5.10) of Heun equation. To do this, consider the action of the transformation $\#$ on the *formal* series (5.10) (with f not necessarily converging). It sends formal solutions of Heun equation (equivalently, formal solutions of (5.11)) to formal solutions. (The proof of symmetry of Heun equation under the transformation $\#$ uses only Leibniz differentiation rule and remains valid for formal series.) The space of formal solutions is two-dimensional, and it is identified with the space of its initial conditions (a_{-1}, a_0) . The transformation $\#$ is its involution. Its eigenvalues are equal to ± 1 , and the corresponding eigenspaces are defined by initial conditions that satisfy (5.14). Therefore, both eigenspaces are one-dimensional and are exactly characterized by equations (5.14), since both equations (5.14) are nontrivial. Thus, a *formal solution* $(a_k)_{k \in \mathbb{Z}}$ of recurrence relations (5.11) is $\#$ -(anti)-invariant, if and only if its coefficients a_{-1}, a_0 satisfy (5.14) with the corresponding sign.

Fix the one-sided solution $\sum_{k \geq -1} a_k z^k$ of recurrence relations (5.11) for $k \geq 0$. It satisfies (5.14), by (5.9). The sequence $(a_k)_{k \geq -1}$ extends uniquely to a two-sided formal solution $(a_k)_{k \in \mathbb{Z}}$ of (5.11) (a priori, not necessarily presenting a converging series for $k \rightarrow -\infty$), since the coefficients at $a_{k \pm 1}$ in (5.11) do not vanish. The latter formal solution should be $\#$ -(anti)-invariant, by (5.14) and the previous statement. Hence,

$$a_k = \pm 2\omega \left(-k - \frac{l}{2} \right) a_{-k} - \mu a_{-(k+1)}$$

by (5.13). The series $\sum_{k < 0} a_k z^k$ converges on \mathbb{C}^* , since it is bounded from above by converging series $2\omega \sum_{k \geq 0} (k + |l| + \mu + 1) |a_k z^k|$, by the latter formula. This together with the above argument proves the theorem. \square

Case 2: $l \notin 2\mathbb{Z} + 1$ and $b = -\frac{l+1}{2}$: **the monodromy eigenvalue equals $-e^{-\pi i l} \neq 1$.** Then the monodromy of equation (1.1) is a Jordan cell, as above. Consider the matrices

$$M_k = \begin{pmatrix} 1 + \frac{\lambda}{(k-\frac{1}{2})^2 - \frac{l^2}{4}} & \frac{\mu^2}{(k-\frac{1}{2})^2 - \frac{l^2}{4}} \\ 1 & 0 \end{pmatrix}, \quad R_k = M_k M_{k+1} \dots \quad (5.15)$$

Theorem 5.15 *Let $\lambda + \mu^2 = \frac{1}{4\omega^2}$, $\omega, \mu \neq 0$, $n = l + 1$, $l \notin 2\mathbb{Z} + 1$. The monodromy operator of the corresponding Heun equation (1.1) has eigenvalue $-e^{-\pi i l}$, if and only if*

$$R_{1,11} \pm 2\omega\mu(R_{1,11} - R_{1,21}) = 0 \quad (5.16)$$

with some choice of sign.

Proof We are looking for a double-infinite solution of Heun equation (1.1) of the type

$$E(z) = z^{-\frac{l+1}{2}} f(z), \quad f(z) = \sum_{k \in \mathbb{Z}} a_k z^k \quad (5.17)$$

of Heun equation (1.1) with f holomorphic on \mathbb{C}^* . That is, with a_k satisfying recurrence relations (1.6) for $b = -\frac{l+1}{2}$, which take the form

$$\left((k - \frac{1}{2})^2 - \frac{l^2}{4} + \lambda\right)a_k - \mu\left(k + \frac{l-1}{2}\right)a_{k-1} + \mu\left(k - \frac{l-1}{2}\right)a_{k+1} = 0. \quad (5.18)$$

The above matrices M_k and R_k coincide with those constructed in (3.9), and they are well-defined for all $k \in \mathbb{Z}$. Therefore, the coefficients a_k , $k \geq 0$ are given by formulas (3.12) up to common constant factor, by Theorems 1.10 and 3.4. In particular,

$$a_0 = \frac{1}{b}R_{0,21} = \frac{1}{b}R_{1,11} = -\frac{2}{l+1}R_{1,11}, \quad a_1 = \frac{\mu}{b(b+1)}R_{1,21} = \frac{4\mu}{l^2-1}R_{1,21}.$$

The condition of (anti-) invariance under the involution $\#$ of the solution takes the form

$$\sum a_k z^{k - \frac{l+1}{2}} = \pm 2\omega \left(\sum \left(k - \frac{l+1}{2}\right) a_k z^{-k - \frac{l-1}{2}} - \mu \sum a_k z^{-k - \frac{l+1}{2}} \right),$$

or equivalently,

$$\sum a_k z^k = \pm 2\omega \left(\sum \left(k - \frac{l+1}{2}\right) a_k z^{-k+1} - \mu \sum a_k z^{-k} \right).$$

The free term of the latter equation is given by the relation

$$(1 \pm 2\omega\mu)a_0 \pm \omega(l-1)a_1 = 0, \quad (5.19)$$

which is equivalent to (5.16). The rest of proof of Theorem 5.15 is analogous to the proof of Theorem 5.14. \square

Corollary 5.16 *Let $\omega, \mu > 0$, $\lambda + \mu^2 = \frac{1}{4\omega^2}$, $l \geq 0$, $n = l + 1$, $B = l\omega$, $A = 2\mu\omega$. The point (B, A) lies in the boundary of a phase-lock area, if and only if one of the following four incompatible statements holds:*

- 1) (B, A) is an adjacency: $l \in \mathbb{Z}$ and $\xi_l(\lambda, \mu) = 0$;
- 2) Heun equation (4.12) has a polynomial solution: $l \in \mathbb{N}$ and $\det(H + \lambda Id) = 0$, where H is the $l \times l$ -matrix from (4.13);
- 3) $l \notin 2\mathbb{Z}$ and equation (5.9) holds;
- 4) $l \notin 2\mathbb{Z} + 1$ and equation (5.16) holds.

Proof If one of the above statements holds, then (B, A) lies in the boundary of a phase-lock area, by Proposition 5.11 and Theorems 4.10, 5.14, 5.15. Conversely, let (B, A) lie in the boundary of a phase-lock area. The monodromy of the corresponding Heun equation (1.1) is parabolic, by Proposition 5.11. If it is unipotent, then $l \in \mathbb{Z}$, since its determinant $e^{-2\pi il}$ should be unit. If $l \in \mathbb{Z}$, then it is unipotent, if and only if some of the two incompatible statements 1) or 2) holds, by Theorems 4.10 and 5.5. Otherwise, the monodromy has Jordan cell type with eigenvalue $\pm e^{-\pi il} \neq 1$, by Propositions 5.6 and 5.12. Therefore, one of the statements 3) or 4) holds, by Theorems 5.14 and 5.15. Statements 3) and 4) are incompatible: they correspond to Heun equation (1.1) with monodromy having multiple eigenvalue $e^{-\pi il}$ or $-e^{-\pi il}$ respectively. This proves the corollary. \square

Proposition 5.17 *Let $l \in \mathbb{Z}$. For given $\omega, \mu > 0$ and $n = l + 1$ the corresponding Heun equation (1.1) has a monodromy eigenfunction with eigenvalue -1 , if and only if the corresponding point $(B, A) \in \mathbb{R}^2$ lies in the boundary of a phase-lock area with a rotation number $\rho \equiv l + 1 \pmod{2\mathbb{Z}}$.*

Proof For $l \in \mathbb{Z}$ the monodromy has unit determinant (Proposition 4.1). Therefore, if it has eigenvalue -1 , then its other eigenvalue is also -1 . Hence, the point (B, A) lies in the boundary of the phase-lock area number $\rho = \rho(B, A)$ (Proposition 5.11). Thus, $e^{\pi i(\pm\rho - l)} = -1$ for both signs, by Proposition 5.6. The latter equality holds if and only if $\rho \equiv l + 1 \pmod{2\mathbb{Z}}$. Conversely, if a point (B, A) with $l = \frac{B}{\omega} \in \mathbb{Z}$ lies in the boundary of a phase-lock area, and $\rho(B, A)$ satisfied the above equality, then the monodromy eigenvalues are equal to -1 , by Proposition 5.6. The proposition is proved. \square

5.6 Conjectures on geometry of phase-lock areas

Here we state conjectures that are motivated by numerical simulations and theoretical results of [9, 10, 13, 18]. Recall that for every $r \in \mathbb{Z}$ we denote

$$L_r = \text{the phase-lock area number } r.$$

The next five conjectures are due to the first author (V.M.Buchstaber) and S.I.Tertychnyi.

Conjecture 5.18 The upper part $L_r^+ = L_r \cap \{A \geq 0\}$ of each phase-lock area L_r is a garland of infinitely many connected components separated by

adjacencies $\mathcal{A}_{r,1}, \mathcal{A}_{r,2} \dots$ lying in the line $\{B = r\omega\}$ and ordered by their A -coordinates.

Remark 5.19 It was shown in [18, theorems 1.2, 3.17] that for every $r \in \mathbb{Z}$ the abscissa of each adjacency in L_r equals $l\omega$, $l \in \mathbb{Z}$, $l \equiv r \pmod{2\mathbb{Z}}$; $0 \leq l \leq r$ if $r \geq 0$; $r \leq l \leq 0$ if $r \leq 0$.

Conjecture 5.20 For every $k \geq 2$ the k -th component in L_r^+ contains the interval $(\mathcal{A}_{r,k-1}, \mathcal{A}_{r,k})$.

Let us introduce the function $\eta(P)$ defined on the interior of each phase-lock area L_r : the value $\eta(P)$ is defined to be the length of the Shapiro step through the point P , that is, the length of the intersection of the phase-lock area L_r with the horizontal line $\{A = A(P)\}$. For physical applications it is important to know how to find the maxima of the function $\eta(P)$ on the connected components of the interior $Int(L_r)$.

Problem 5.21 Find the maximal value of the function $\eta(P)$ on each connected component of every phase-lock area.

Problem 5.22 Is it true that for every given $k \in \mathbb{N}$ all the adjacencies $\mathcal{A}_{r,k}$, $r = 1, 2, \dots$, lie on the same line with azimuth depending on k , see Fig. 1–5?

Proposition 5.23 *The first component of the zero phase-lock area contains the interior of the square with vertices $(0, \pm 1)$, $(\pm 1, 0)$.*

Proof Let Q denote the interior of the square under question: it is defined by the inequality $|A| + |B| < 1$. Let us show that for every $(B, A) \in Q$ the ϕ -component of vector field (5.2) is negative whenever $\phi = \frac{\pi}{2}$ and positive whenever $\phi = -\frac{\pi}{2}$. This implies that its flow map for any time sends the space segment $[-\frac{\pi}{2}, \frac{\pi}{2}]$ strictly to itself and hence, has a fixed point there, and thus, has zero rotation number. Indeed, the ϕ -component of vector field (5.2) equals

$$\dot{\phi} = \frac{1}{\omega}(-\sin \phi + B + A \cos \tau).$$

Therefore, for every $(B, A) \in Q$ it lies strictly between $\frac{1}{\omega}(-\sin \phi - 1)$ and $\frac{1}{\omega}(-\sin \phi + 1)$. This implies the above-mentioned inequalities at $\phi = \pm \frac{\pi}{2}$ and proves the proposition. \square

Example 5.24 In the case, when $A = 0$, the differential equation defined by vector field (5.2) takes the form

$$\frac{d\phi}{d\tau} = \frac{1}{\omega}(B - \sin \phi).$$

This is an autonomous differential equation that can be solved explicitly, see, e.g., [3, p. 126, formula (6.2.6)]. In the case, when $|B| \leq 1$, its right-hand side vanishes at the points, where $\sin \phi = B$, and these are fixed points for the flow maps, and hence, the rotation number equals zero. Let now $B > 1$. Then the right-hand side is positive everywhere, hence the rotation number is positive. Let u_1 and u_2 be the roots of the quadratic polynomial $B(1 + u^2) - 2u = 0$:

$$u_{1,2} = \frac{1 \pm i\sqrt{B^2 - 1}}{B} = e^{\pm i\beta}, \quad \beta = \arccos \frac{1}{B}.$$

The general solution of the above equation is given by the implicit function

$$\begin{aligned} \tau = \omega \int_{\phi_0}^{\phi} \frac{d\phi}{B - \sin \phi} &= -i\alpha^{-1} \ln\left(\frac{u - u_1}{u - u_2}\right) + c, \quad u = \tan \frac{\phi}{2}, \\ \alpha &= -i\omega^{-1} \frac{u_1 - u_2}{u_1 + u_2} = \omega^{-1} \sqrt{B^2 - 1}, \quad c \equiv \text{const}. \end{aligned}$$

Then we get

$$\tan \frac{\phi}{2} = \frac{\exp(i\alpha(\tau - c))u_2 - u_1}{\exp(i\alpha(\tau - c)) - 1} = \frac{\sin(\frac{\alpha}{2}(\tau - c) - \beta)}{\sin(\frac{\alpha}{2}(\tau - c))}, \quad c \equiv \text{const}.$$

For $l \in \mathbb{N}$ let $\mathcal{P}_l \in \{B = l\omega\}$ be the point with the maximal A -coordinate, for which the corresponding Heun equation (1.19) has a polynomial solution.

Conjecture 5.25 All \mathcal{P}_l lie on the same line, see Fig. 7.

Conjecture 5.26 As $\omega \rightarrow 0$, for every r the set $L_{r,1} := L_r \cap \{A \geq A(\mathcal{A}_{r,1})\}$ tends to the ray $\{A \geq 1\}$ in the A -axis. Namely, the maximal distance of a point of the set $L_{r,1}$ to the ray $\{A \geq 1\}$ tends to zero.

In what follows we will discuss in detail the next two conjectures that are closely related to Conjectures 5.18 and 5.20.

Conjecture 5.27 For $r \in \mathbb{N}$ the phase-lock area with rotation number $r + 1$ does not intersect the line

$$\Lambda_r = \{B = \omega r\} \subset \mathbb{R}^2.$$

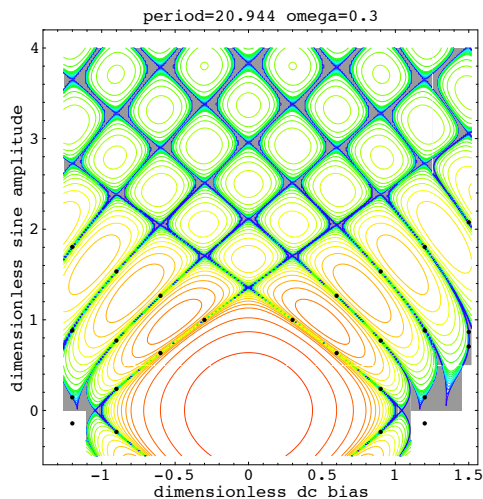


Figure 7: Phase-lock areas for $\omega = 0.3$; the marked points correspond to Heun equations (1.19) with polynomial solutions. They are described by Theorem 5.8.

Conjecture 5.28 For $r \in \mathbb{N}$ the phase-lock area with rotation number r does not intersect the line Λ_{r-2} .

Remark 5.29 Conjecture 5.27 implies Conjecture 5.28. Indeed, the points (B, A) with $A > 0$ large enough of the phase-lock area L_r , $r \in \mathbb{Z}$ lie close to Λ_r , i.e., they are separated from the line Λ_{r-2} by Λ_{r-1} . This follows from the fact that its boundary consists of graphs of two functions $B = g_{\pm r}(A)$ and $g_{\pm r}(A) \rightarrow r\omega$, as $A \rightarrow +\infty$ (follows from results of [22]). Therefore, if the phase-lock area L_r does not intersect the line Λ_{r-1} , then it also does not intersect Λ_{r-2} . Each one of Conjectures 5.27, 5.28 together with [18, theorems 1.2, 3.17] (see Remark 5.19) imply Conjecture 5.18.

A possible strategy for Conjecture 5.27. If the boundary of the phase-lock area with rotation number $r + 1$ intersects the line Λ_r , then the intersection points correspond to parabolic monodromy operator of Jordan cell type with both eigenvalues equal to -1 (Proposition 5.17). That is, some of equations (5.9) or (5.16) should hold at each intersection point.

Conjecture 5.30 Let $l \in \mathbb{N}$, and let the parameter μ satisfy some of equations (5.9) if $l \notin 2\mathbb{Z}$, or (5.16) if $l \in 2\mathbb{Z}$. Consider the corresponding monodromy eigenfunction of Heun equation (1.1) from Proposition 5.17 with

eigenvalue -1 . Then the corresponding solution of the Riccati equation from the beginning of Subsection 5.3 gives a periodic solution of the corresponding equation (5.2) on two-torus having rotation number between 0 and l .

Conjecture 5.30 would imply Conjecture 5.27.

A possible strategy for Conjecture 5.28. We know that for $\omega \geq 1$ the statements of Conjecture 5.27 and hence Conjecture 5.28 hold (Chaplygin Theorem argument, see [8, lemma 4] and [18, proposition 3.4]). The adjacencies of a phase-lock area with rotation number ρ cannot lie on lines Λ_l with $l \not\equiv \rho \pmod{2\mathbb{Z}}$, see [18, theorem 3.17]; this also follows from Proposition 5.17. Suppose that for a certain “critical” value $\omega = \omega_0 < 1$ the boundary of the phase-lock area number $l + 2 > 0$ moves from the right to the left, as ω decreases to ω_0 , and touches the line Λ_l at some point (B, A) , as $\omega = \omega_0$. Then there are two possibilities for the corresponding Heun equation:

- the associated Heun equation (4.12) (equation (1.1) with l replaced by $-l$) has a polynomial solution. But this case is forbidden by Buchstaber–Tertychnyi result [9, theorem 4], which states that then the corresponding rotation number cannot be greater than l .

- the point (B, A) an adjacency: Heun equation (1.1) has a solution holomorphic on \mathbb{C} . This together with the above-mentioned known fact that the boundaries of phase-lock areas are graphs of functions (Remark 5.29) implies that both boundary components of the phase-lock area with rotation number $l + 2$ are tangent to the line Λ_l at the point (B, A) .

Conjecture 5.31 For every $\omega > 0$ for every adjacency $(B_0, A_0) \in \mathbb{R}_+^2$ of any phase-lock area the branches of its boundary at (B_0, A_0) cannot be both tangent to the vertical line $\{B = B_0\}$.

Proposition 5.32 *Conjecture 5.31 implies Conjecture 5.28, and hence, 5.18.*

The proposition follows from the above argument and Remark 5.29.

A possible approach to Conjecture 5.31 could be studying equations (5.9) and (5.16) defining the boundaries and to see what happens with them when the “non-resonant” parameters approach the resonant ones. A first step is done below.

5.7 Description of boundaries of phase-lock areas near adjacencies. Relation to Conjecture 5.28

Let us write down equation (5.9) on the boundaries in a neighborhood of a line Λ_{l_0} , $l_0 \in 2\mathbb{Z}$. Let us recall the formulas for the corresponding matrices:

$$M_k = M_k(\lambda, \mu, l) = \begin{pmatrix} 1 + \frac{\lambda}{k^2 - \frac{l^2}{4}} & \frac{\mu^2}{k^2 - \frac{l^2}{4}} \\ 1 & 0 \end{pmatrix}, \quad R_k = M_k M_{k+1} \dots$$

Equation (5.9) for the boundaries is

$$R_{0,21} \pm \omega l (R_{0,21} - R_{0,11}) = 0.$$

Note that the matrices M_k are analytic in a neighborhood of the hyperplane $\{l = l_0\}$ except for the matrix $M_{\frac{l_0}{2}}$, which has pole of order one along the latter hyperplane. One has

$$\frac{l_0^2 - l^2}{4} M_{\frac{l_0}{2}} = \left(\begin{pmatrix} \lambda & \mu^2 \\ 0 & 0 \end{pmatrix} + \frac{l_0^2 - l^2}{4} \begin{pmatrix} 1 & 0 \\ 1 & 0 \end{pmatrix} \right).$$

Set

$$\mathcal{R} = \frac{l_0^2 - l^2}{4} R_0, \quad X = M_0 \dots M_{\frac{l_0}{2}-1}, \quad X = Id \text{ for } l_0 = 0.$$

One has

$$\begin{aligned} \mathcal{R} &= X \left(\begin{pmatrix} \lambda & \mu^2 \\ 0 & 0 \end{pmatrix} + \frac{l_0^2 - l^2}{4} \begin{pmatrix} 1 & 0 \\ 1 & 0 \end{pmatrix} \right) R_{\frac{l_0}{2}+1}, \\ \begin{pmatrix} \lambda & \mu^2 \\ 0 & 0 \end{pmatrix} R_{\frac{l_0}{2}+1} \Big|_{l=l_0} &= \begin{pmatrix} \xi_{l_0}(\lambda, \mu) & 0 \\ 0 & 0 \end{pmatrix}, \end{aligned}$$

by (4.9), the equality $R_{s,12} = R_{s,22} = 0$ for every s (Corollary 3.2) and since the matrices $M_{\frac{l_0}{2}+k}(\lambda, \mu, l_0)$, $R_{\frac{l_0}{2}+k}(\lambda, \mu, l_0)$ coincide with the matrices M_k , R_k preceding (4.9) with $l = l_0$. Therefore,

$$\mathcal{R} = \xi_{l_0}(\lambda, \mu) \begin{pmatrix} X_{11} & 0 \\ X_{21} & 0 \end{pmatrix} + (l - l_0) \chi(l, \lambda, \mu), \quad (5.20)$$

where $\chi(l, \lambda, \mu)$ is a holomorphic matrix-valued function on a neighborhood of the hyperplane $\{l = l_0\}$. Now equation (5.9) can be rewritten as

$$\mathcal{R}_{21} \pm \omega l (\mathcal{R}_{21} - \mathcal{R}_{11}) = 0. \quad (5.21)$$

Taking into account asymptotics (5.20) one gets asymptotic form of equation (5.21):

$$\xi_{l_0}(\lambda, \mu)(X_{21} \pm \omega l(X_{21} - X_{11})) + (l - l_0)(\chi_{21} \pm \omega l(\chi_{21} - \chi_{11})) = 0. \quad (5.22)$$

Now let us consider the case, when $l_0 \in 2\mathbb{Z} + 1$, and let us write down equation (5.16) in a neighborhood of the line Λ_{l_0} . The corresponding matrices from (5.15) are

$$M_k = \begin{pmatrix} 1 + \frac{\lambda}{(k-\frac{1}{2})^2 - \frac{l^2}{4}} & \frac{\mu^2}{(k-\frac{1}{2})^2 - \frac{l^2}{4}} \\ 1 & 0 \end{pmatrix}, \quad R_k = M_k M_{k+1} \dots$$

Set

$$\mathcal{R} = \frac{l_0^2 - l^2}{4} R_1, \quad X = M_1 \dots M_{\frac{l_0+1}{2}-1}; \quad X = Id \text{ for } l_0 = 1.$$

Analogously to the above calculations, we get asymptotic relation (5.20). Together with (5.16), it implies

$$\xi_{l_0}(\lambda, \mu)(X_{11} \pm 2\omega\mu(X_{11} - X_{21})) + (l - l_0)(\chi_{11} \pm 2\omega\mu(\chi_{11} - \chi_{21})) = 0, \quad (5.23)$$

where $\chi(l, \lambda, \mu)$ is a holomorphic matrix-valued function on a neighborhood of the hyperplane $\{l = l_0\}$. Set

$$\zeta_l(\omega, \mu) = \xi_l(\lambda, \mu) = \xi_l\left(\frac{1}{4\omega^2} - \mu^2, \mu\right).$$

Conjecture 5.33 For every $\omega > 0$ and $l \in \mathbb{Z}$, $l \geq 0$ the zeros of the function ζ_l are simple, that is, $\frac{\partial \zeta_l}{\partial \mu} \neq 0$ at zeros of the function ζ_l .

Remark 5.34 The matrices X in both cases treated above are non-degenerate for $l = l_0$. This implies that in formulas (5.22) and (5.23) the multiplier at ξ_{l_0} is non-zero for at least one choice of sign.

Conjecture 5.33 together with the above remark would imply that *for every $l \in \mathbb{Z}$ at every adjacency in the line Λ_l at least one boundary component of the corresponding phase-lock area (depending on the above-chosen sign) is transversal to the line Λ_l .*

Proposition 5.35 *Conjecture 5.33 implies Conjectures 5.31, 5.28, 5.18.*

Proof Conjecture 5.33 implies that no adjacency can be born at a tangency of both boundary components with a line $l = l_0$, $l_0 \in \mathbb{Z}$, by transversality of one of them to the latter line (the above statement). In other words, it

implies Conjecture 5.31, and hence, Conjectures 5.28, 5.18, by Proposition 5.32. \square

Open Question. Study the degeneracy of equation (5.7) on non-integer level curves of rotation number, as the latter number tends to an integer value. The level curves should tend to boundaries of phase-lock areas. How to retrieve equations (5.9), (5.16), (5.22) and (5.23) on the boundaries and equation $\xi_l(\lambda, \mu) = 0$ on the adjacencies from asymptotics of degenerating equation (5.7), as r tends to an integer number? Find a method to calculate the coordinates of the adjacencies corresponding to an integer rotation number r_0 via the level curves $\{\rho = r\}$, as $r \rightarrow r_0$.

5.8 Asymptotic behavior of phase-lock areas for small ω

The problem to describe the behavior of the phase-lock areas, as $\omega \rightarrow 0$, is known and motivated by physical applications. Concerning this problem V.M.Buchstaber and S.I.Tertychnyi, and later D.A.Filimonov, V.A.Kleptsyn and I.V.Schurov have done numerical experiments. These experiments have shown that after appropriate rescaling of the variables (B, A) , the phase-lock areas tend to open sets (which we will call the *limit rescaled phase-lock areas*) whose components form a partition of the whole plane similar to a chess table turned by $\frac{\pi}{4}$, see Fig. 5 for $\omega = 0.3$.

Open Question 7. Obtain theoretical results on the problem described above.

6 Acknowledgements

The authors are grateful to S.I.Tertychnyi for helpful discussions and to R.R.Gontsov and A.V.Klimenko for careful reading the paper and helpful remarks. The authors are grateful to R.R.Gontsov for translating the paper into Russian.

References

- [1] Arnold, V. I. *Geometrical Methods in the Theory of Ordinary Differential Equations*, Second edition. Grundlehren der Mathematischen Wissenschaften [Fundamental Principles of Mathematical Sciences], 250. Springer-Verlag, New York, 1988.
- [2] Arnold, V.I.; Ilyashenko, Yu.S. *Ordinary differential equations*. Encyclopaedia Math. Sci., **1** (1988), 1–148.

- [3] Barone, A.; Paterno, G. *Physics and Applications of the Josephson Effect*, John Wiley and Sons, New York–Chichester–Brisbane–Toronto–Singapore, 1982.
- [4] V.M. Buchstaber, O.V. Karpov, S.I. Tertychniy. *Electrodynamic properties of a Josephson junction biased with a sequence of δ -function pulses*. J. Exper. Theoret. Phys., **93** (2001), No.6, 1280–1287.
- [5] Buchstaber, V.M.; Karpov, O.V.; Tertychniy, S.I. *On properties of the differential equation describing the dynamics of an overdamped Josephson junction*, Russian Math. Surveys, **59:2** (2004), 377–378.
- [6] Buchstaber, V.M.; Karpov, O.V.; and Tertychniy, S.I. *Peculiarities of dynamics of a Josephson junction shifted by a sinusoidal SHF current* (in Russian). Radiotekhnika i Elektronika, **51:6** (2006), 757–762.
- [7] Buchstaber, V.M.; Karpov, O.V.; Tertychniy, S.I. *The rotation number quantization effect*, Theoret and Math. Phys., **162** (2010), No. 2, 211–221.
- [8] Buchstaber, V.M.; Karpov, O.V.; Tertychniy, S.I. *The system on torus modeling the dynamics of Josephson junction*, Uspekhi Mat. Nauk, **67:1(403)** (2012), 181–182; English transl.: Russ. Math. Surveys, **67** (2012), 178–180.
- [9] Buchstaber, V.M.; Tertychniy, S.I. *Explicit solution family for the equation of the resistively shunted Josephson junction model*. Theoret. and Math. Phys., **176** (2013), No.2, 965–986.
- [10] Buchstaber, V.M.; Tertychniy, S.I. *Holomorphic solutions of the double confluent Heun equation associated with the RSJ model of the Josephson junction*. Theoret. and Math. Phys., **182:3** (2015), 329–355.
- [11] Buchstaber, V.M.; Tertychniy, S.I. *A remarkable sequence of Bessel matrices*, Mathematical Notes, **98** (2015), No. 5, 714–724.
- [12] Buchstaber, V.M.; Tertychniy, S.I. *Automorphisms of solution space of special double confluent Heun equations*, Funct. Anal. Appl., **50:3** (2016), 176–192.
- [13] Buchstaber, V.M.; Glutsyuk, A.A. *On determinants of modified Bessel functions and entire solutions of double confluent Heun equations*. Non-linearity, **29** (2016), 3857–3870.

- [14] Gunning, R.; Rossi, H. *Analytic functions of several complex variables*. Prentice-Hall Inc., Englewood Cliffs, N.J., 1965.
- [15] McCumber, D.E. *Effect of ac impedance on dc voltage-current characteristics of superconductor weak-link junctions*, J. Appl. Phys., **39** (1968), No.7, 3113–3118.
- [16] Foote, R.L., *Geometry of the Prytz Planimeter*, Reports on Math. Phys. **42:1/2** (1998), 249–271.
- [17] Foote, R.L.; Levi, M.; Tabachnikov, S. *Tractrices, bicycle tire tracks, hatchet planimeters, and a 100-year-old conjecture*, Amer. Math. Monthly, **103** (2013), 199–216.
- [18] Glutsyuk, A.A.; Kleptsyn, V.A.; Filimonov, D.A.; Schurov, I.V. *On the adjacency quantization in an equation modeling the Josephson effect*, Funct. Analysis and Appl., **48** (2014), No.4, 272–285.
- [19] Ilyashenko, Yu.S. *Lectures of the summer school “Dynamical systems”*, Poprad, Slovak Republic, 2009.
- [20] Ilyashenko, Yu.S.; Filimonov, D.A.; Ryzhov, D.A. *Phase-lock effect for equations modeling resistively shunted Josephson junctions and for their perturbations*, Funct. Analysis and its Appl. **45** (2011), No. 3, 192–203.
- [21] Josephson, B.D., *Possible new effects in superconductive tunnelling*, Phys. Lett., **1** (1962), No. 7, 251–253.
- [22] Klimenko, A.V.; Romaskevich, O.L. *Asymptotic properties of Arnold tongues and Josephson effect*, Mosc. Math. J., **14:2** (2014), 367–384.
- [23] Likharev, K.K.; Ulrikh, B.T. *Systems with Josephson junctions: Basic Theory*, Izdat. MGU, Moscow, 1978.
- [24] Olver, F.W.J.; Lozier, D.W.; Boisvert, R.F.; Clark, C.W. (Eds.) *NIST Handbook of Mathematical Functions*, Cambridge Univ. Press, Cambridge, 2010.
- [25] Schmidt, V.V., *Introduction to physics of superconductors* (in Russian), MCCME, Moscow, 2000.
- [26] Shapiro, S.; Janus, A.; Holly, S. *Effect of microwaves on Josephson currents in superconducting tunneling*, Rev. Mod. Phys., **36** (1964), 223–225.

- [27] Slavyanov, S. Yu.; Lay, W. *Special Functions: a unified theory based on singularities* Oxford University Press, 2000.
- [28] Stewart, W.C., *Current-voltage characteristics of Josephson junctions*. Appl. Phys. Lett., **12** (1968), No. 8, 277–280.
- [29] Tertychnyi, S.I. *Long-term behavior of solutions of the equation $\dot{\phi} + \sin \phi = f$ with periodic f and the modeling of dynamics of overdamped Josephson junctions*, Preprint <https://arxiv.org/abs/math-ph/0512058>.
- [30] Tertychnyi, S.I. *The modelling of a Josephson junction and Heun polynomials*, Preprint <https://arxiv.org/abs/math-ph/0601064>